



Pacific Ocean Routes

South America: March 1849 - June 1851



Dated Valparaiso, Chile March 26 1851 - posted on board Pacific Steam Navigation Co. steamer PSNC *New Granada* arrived April 19 at Panama - **straight-line "VAPOR N. GRANADA" marking** PMSC *Tennessee* arrived May 20 at San Francisco from Panama - San Francisco boxed 30¢ due



Postmarked September 1, 1849 in San Francisco - double-weight 40¢ due to Panama forwarder PMSC *Panama* to Panama - PSNC *New Granada* to Chile - numeral "10" mark applied on board



Pacific Ocean Routes

South America: March 1849 - June 1851

The March 3, 1847 US Act set the rate to or from Panama at 30¢ per ½ ounce, effective July 1. This was replaced by a 20¢ per ½ ounce rate on July 1, 1851.



Entered the mails at the Panama City US mail agency in September 1850 - 30¢ due
Straight-line “PANAMA” marking - PMSC *Panama* to San Francisco September 21
 Mail was delayed on steamship - rare September 30 “San Francisco Rec’d” postmark

Fewer than five known “PANAMA” straight-lines to San Francisco



Pacific Ocean Routes

South America: July 1851 - March 1855



Dated October 31, 1852 in San Francisco - prepaid 50¢ rate to Chile via Panama and English mails
 Red ms. 1/- credit to GB - PMSC *California* - rated "Paid at Panama" in English mails on November 23
 PSNC *Quito* left Panama November 24 and arrived December 12 at Valparaiso - fully paid rate



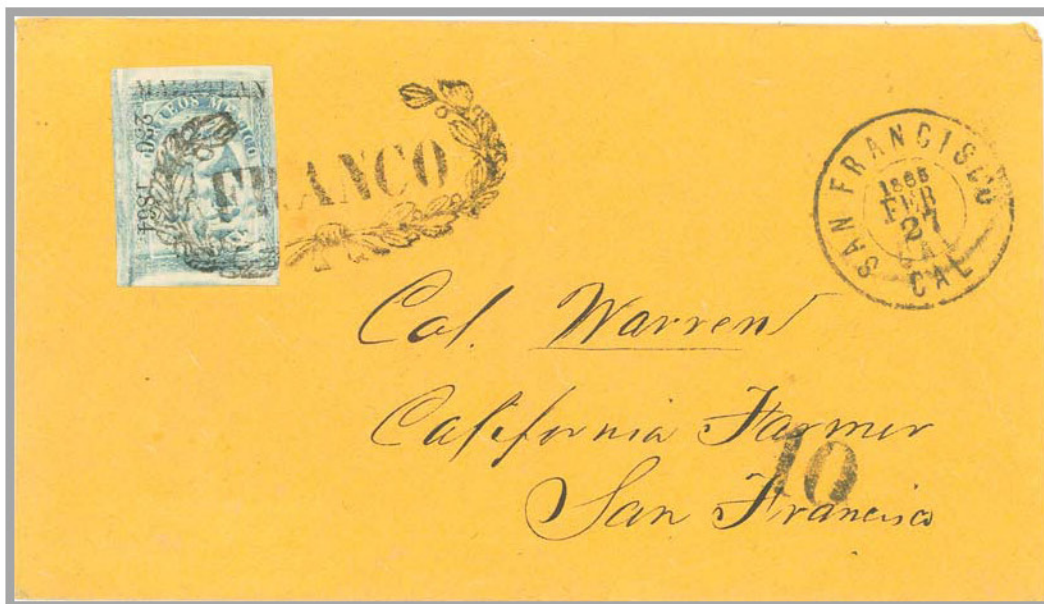
Dated Valparaiso, Chile March 20 1852 - carried under cover by private ship to Panama
 First sailing of NY & SF Steamship Co. *Winfield Scott* - 6¢ ship fee due April 29 at San Francisco



Pacific Ocean Routes

South America: July 1863 - June 1869

The PMSC carried mail to San Francisco from South and Central America, often connecting at Panama with the PSNC.



Posted February 1865 in Mazatlan, Mexico - prepaid 1 reale with 1864 Eagle Issue stamp
 Carried by PMSC steamship from Mazatlan to San Francisco - 10¢ blanket steamship rate due



Posted May 1863 in Chile - prepaid by strip of 1861 5 centavos stamps - PSNC steamer to Panama
Only known example of "Steam Panama" in red - PMSC steamship carried letter from Panama