

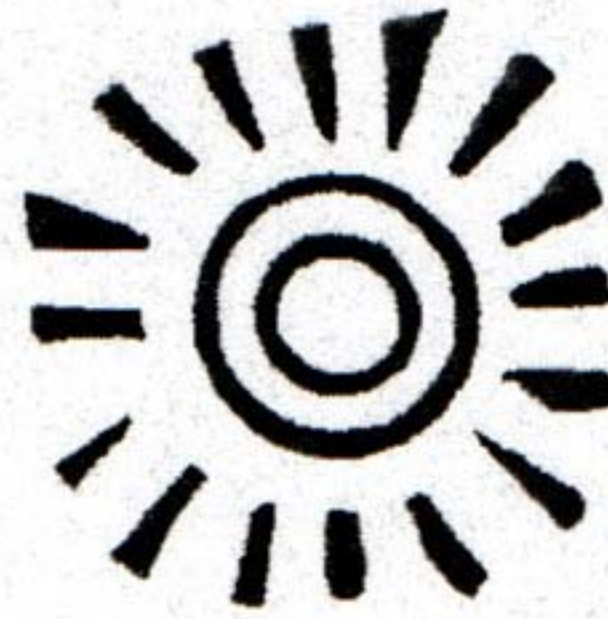
The San Francisco Cogwheel Fancy Cancel

In December 1861 the San Francisco, CA USPO began using a fancy cogwheel design to cancel stamps as they entered the mails (for outgoing mail, and in some cases incoming mail if this was entrance into the U.S. mail system). This was not the only cancellation device in use by the SFPO at this time. However, it was the only fancy style and it is unique to this post office. During its lifetime three different types of the cogwheel cancel were used (Types 1, 2 & 3). The main usage period for the cancel was 1862-1867. Oddly enough, after a gap of more than 10 years, evidence of the cancel reappears during the years 1879-1887. It is not understood why this cancel 're-surfaced' after so many years of not being used.

This exhibit focuses on all three types of the cogwheel fancy cancel, from the early years through its main usage period and finally to the end of its lifespan. Details of each type are discussed along with various postal system usages, both domestic and foreign. Two major routes for mail transportation out of San Francisco were in use during this period; the ocean (Panama) route and the central overland route.

Type 1 Cogwheel:

Has the smallest diameter circles
9-9.5 mm outer circle, 5-5.5 mm inner circle
16 cogs
Many cogs have pointy-tips (wedge-shaped)
Separate from date stamp device
Observed usage period: Feb 1862 through Dec 1863



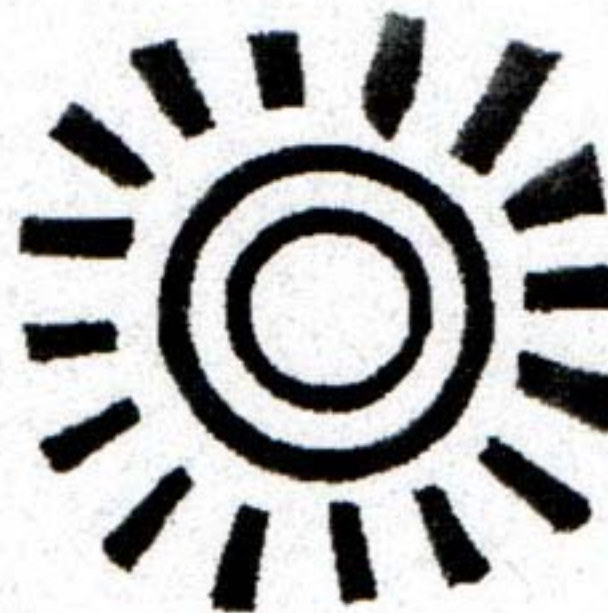
Cogwheels Enlarged to Show Detail



Type 1 on 1861
5c Buff Issue

Type 2 Cogwheel:

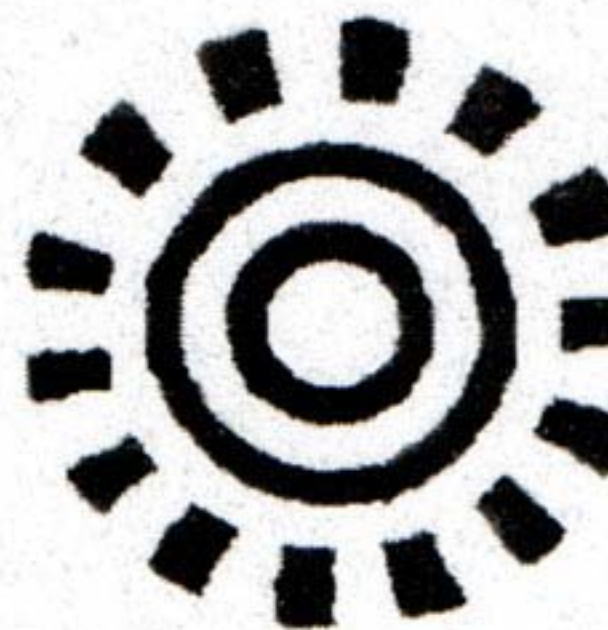
Similar style to Type 1, but with larger diameter circles
10-10.5 mm outer circle, 5.5-6 mm inner circle
16 cogs (same as Type 1)
Most cog-tips are blunt/squared (not wedge-shaped)
Separate from date stamp device
Observed usage period: Dec 1861 through Oct 1864
(with sporadic usage 1868-1887)



Type 2 on 1861
90c Blue Issue

Type 3 Cogwheel:

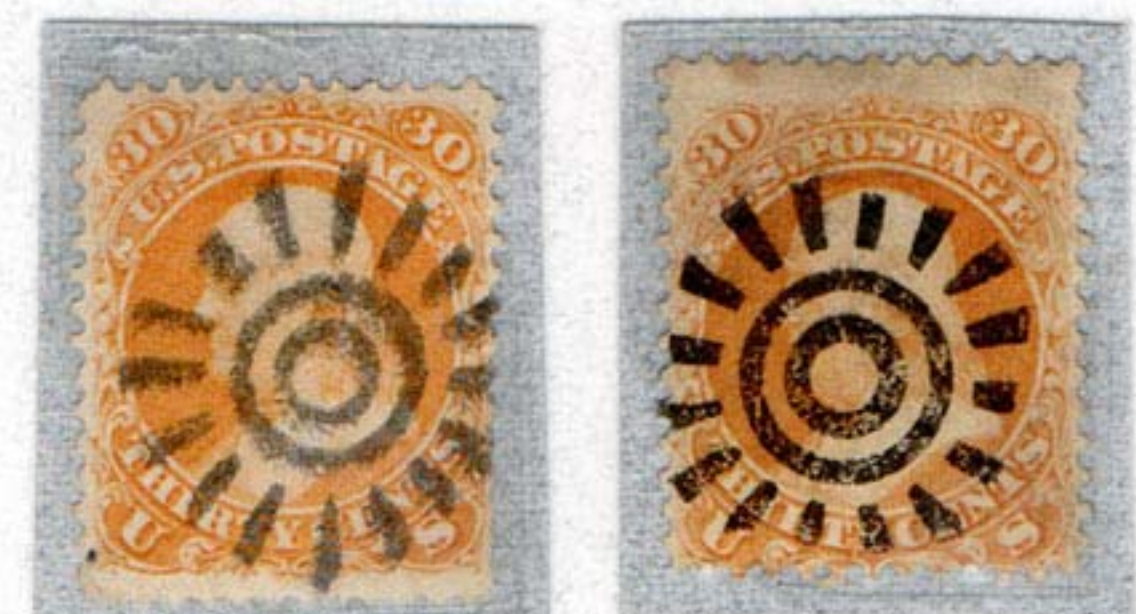
Different in style to either Type 1 or 2
12-12.5 mm outer circle, 7 mm inner circle
14 cogs (Type 1 and 2 have 16)
All cog-tips are blunt/squared
Integral part of a duplex date stamp device
Observed usage period: Nov 1863 through Dec 1867



Type 3 on 1862
24c Gray Issue

The exhibit is organized:

- Title page with information on the three types of cancels (Pg 1)
- Early use for each of the three types of cancels (Pg 2)
- Domestic use during 10 & 3 cent rate periods of the 1860s (Pg 3)
- Examples carried by mail steamer and overland (Pgs 4-5)
- Patriotic use (Pg 6)
- Incoming from the Hawaiian Islands (Pg 7)
- Various foreign destinations and rates (Pgs 8-12)
- Examples with advertising & interesting rates/destinations (Pgs 13-15)
- Late use of the cancel (Pg 16)



Comparison of the similar Type 1 & 2 cancels on 1861 30c Orange Issue. Cancel differences are easier to identify when viewed side-by-side.

Early Use of Type 1, 2 and 3 Cancels



FEB 3, 1862, Type 1 cancel on 1857 12c issue. Cog tips have points/wedges as well as smaller circles compared to Type 2 below. **Earliest date observed by exhibitor for Type 1 cancel.**

Cancel applied at SFPO upon receipt. 12c U.S. postage pays 10c domestic rate (to Iowa) plus 2c ship fee. 5c Hawaiian postage pays inter-island rate. Late use of 12c issue, demonetized in the U.S. but still recognized as prepayment on Hawaiian mail passing through SF. **Mixed franking with the Hawaii 5c 1861 Kamehameha and U.S. 12c 1857 issues.**

FEB 26, 1862, Type 2 (first two months of cancel use).

10c rate period, to Mass. Double rate letter.

Circles are a little larger than Type 1, cog-tips not pointed, but squared. Note that even though it is Type 2, this version of the cancel was first to appear (late DEC 1861), slightly ahead of Type 1.

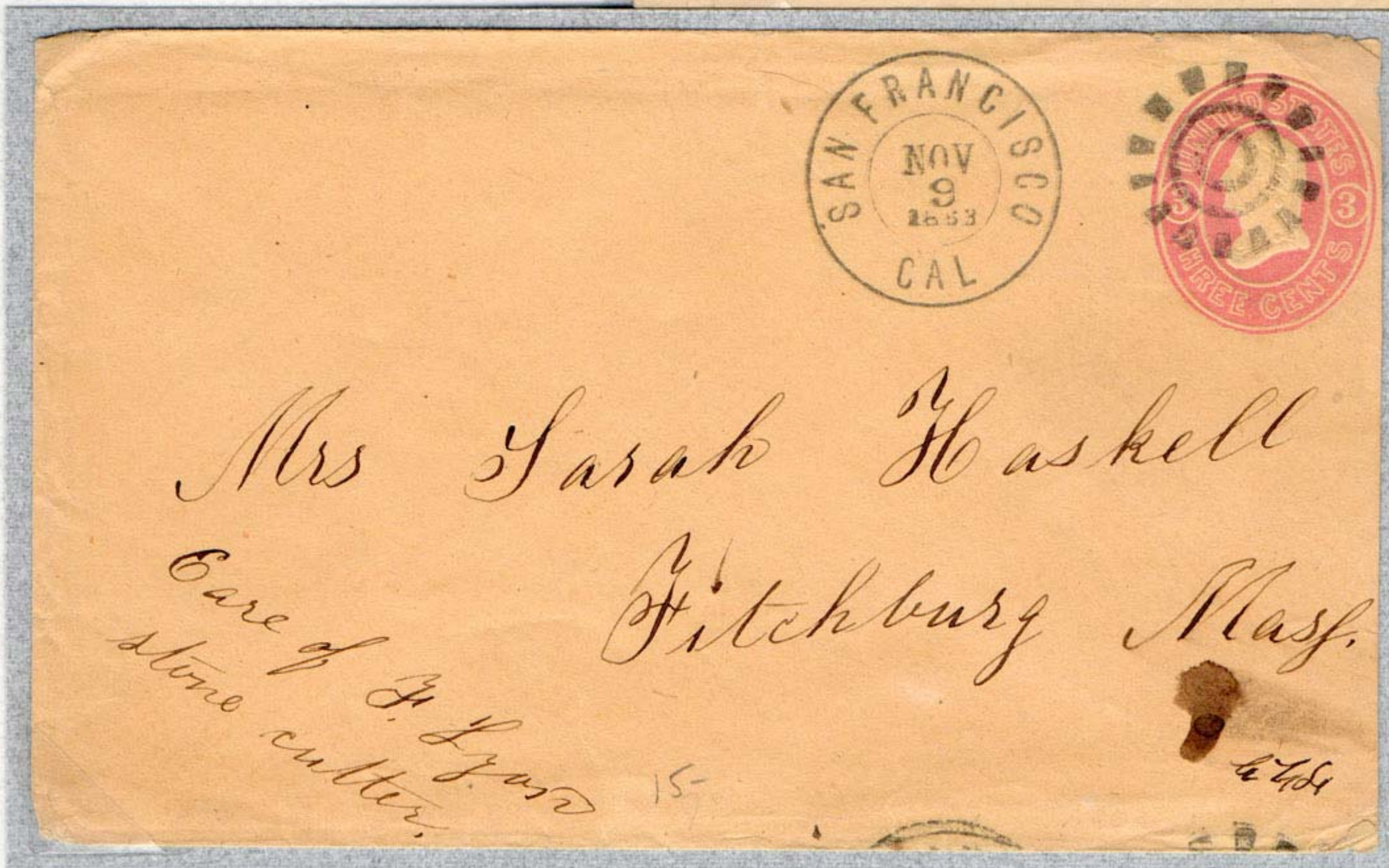


NOV 9, 1863, Type 3 cancel.

Earliest date observed by exhibitor for Type 3 cancel.

3c rate period, to Mass.

It is easy to identify Type 3 due to the short cog-arm design and its 14 cogs (Type 1 and 2 have 16). Also, the circles are the largest diameter of the three types.



Domestic Destinations



JUN 24, 1863, Type 1.

10c rate period, to NY.
The last week of this rate
period as the new 3c rate
started JUL 1, 1863.

APR 22, 1862, Type 1. The
strike is very clear, the
points/wedges and the
smaller circles stand out
clearly.

10c rate period, to NY.
Sender may not have had 7
cents in stamps or a blank
envelope to mail with the 10
cent stamp. Rate apparently
overpaid by 3 cents.



OCT 12, 1863, Type 2.

3c rate period, to
Minnesota.



Mail Carried by Steamer



JAN 4, 1865, Type 3 on illustrated "Via Panama" cover.

3c rate period, to Mass.

APR 21, 1864, Type 2 with manuscript "Per St Louis Via Panama". The *St Louis* was a steamer in service for the Pacific Mail Steamship Company (PMSC), its maiden voyage out of SF was in FEB 1861.



3c rate period, to NY. Double rate letter, paid by strip of three 1863 2c black issue.



FEB 10 (1864 or later), Type 3 with manuscript "Via Panama Per Strm. Golden Age". The *Golden Age* was a PMSC steamer with a long and successful service record, its maiden voyage out of SF was in OCT 1854.

3c rate period, to Pennsylvania. Double rate letter.

Mail Carried Overland



MAR 26, 1864, Type 3
(year via letter contents).

3c rate period, to Mass.
1 cent overpayment,
manuscript "Overland".
Overland mail at this time
traveled along the Central
Route, initiated on July 1,
1861, the Southern Route
having been terminated at
the start of the Civil War.



APR 13, 1863, Type 1.

10c rate period, to
Pennsylvania, manuscript
"Overland Mail".



OCT 18, 1864, Type 2.

3c rate period, to NY,
manuscript "Per Overland
Mail".

Sender addressed to "U.S.
America", somewhat
amusing considering CA
became a state 14 years
earlier!

Patriotic Use



Mr. George E. Newhall
Care Prof. George Newhall, Thacher, & Co
Boston
Massachusetts

JUN 23, 1862, Type 1, Lincoln Patriotic.
10c rate period, to Massachusetts.



Mr. Harry A. Stowell
Boylston Centre
Worcester County
Mas

MAR 27, 1862, Type 2, Union Constitution Patriotic.
10c rate period, to Massachusetts.

Incoming from the Hawaiian Islands



Type 3 on 1865 Hawaiian Numeral Issue (cancelled at SFPO)



Type 2 on 1861 Hawaiian Kamehameha III Issue (used in 1862 or later, cancelled at SFPO)

OCT 25, 1866 (based on sailing date), Type 3, cancel applied at SFPO upon receipt. 3c rate period, to NY. 5c U.S. postage pays 3c domestic rate plus 2c ship fee. 5c Hawaiian postage pays Hawaiian inter-island rate. **Mixed franking with the Hawaii 5c 1866 Kamehameha and U.S. 2c & 3c 1861-63 issues.**



JUN 7, 1867 (based on sailing date), Type 3, cancel applied at SFPO upon receipt. 3c rate period, to Nebraska Territory. 5c U.S. postage pays 3c domestic rate plus 2c ship fee. Hawaiian postage paid in cash in Honolulu.



Front side of cover to left showing Honolulu and SF postmarks

MAY 31, 1862, Type 1, cancel applied at SFPO upon receipt. 10c rate period, to Mass. 12c U.S. postage (applied to reverse side of envelope) pays 10c domestic rate plus 2c ship fee. Hawaiian postage paid in cash in Honolulu.

Foreign Destinations – Germany/Switzerland



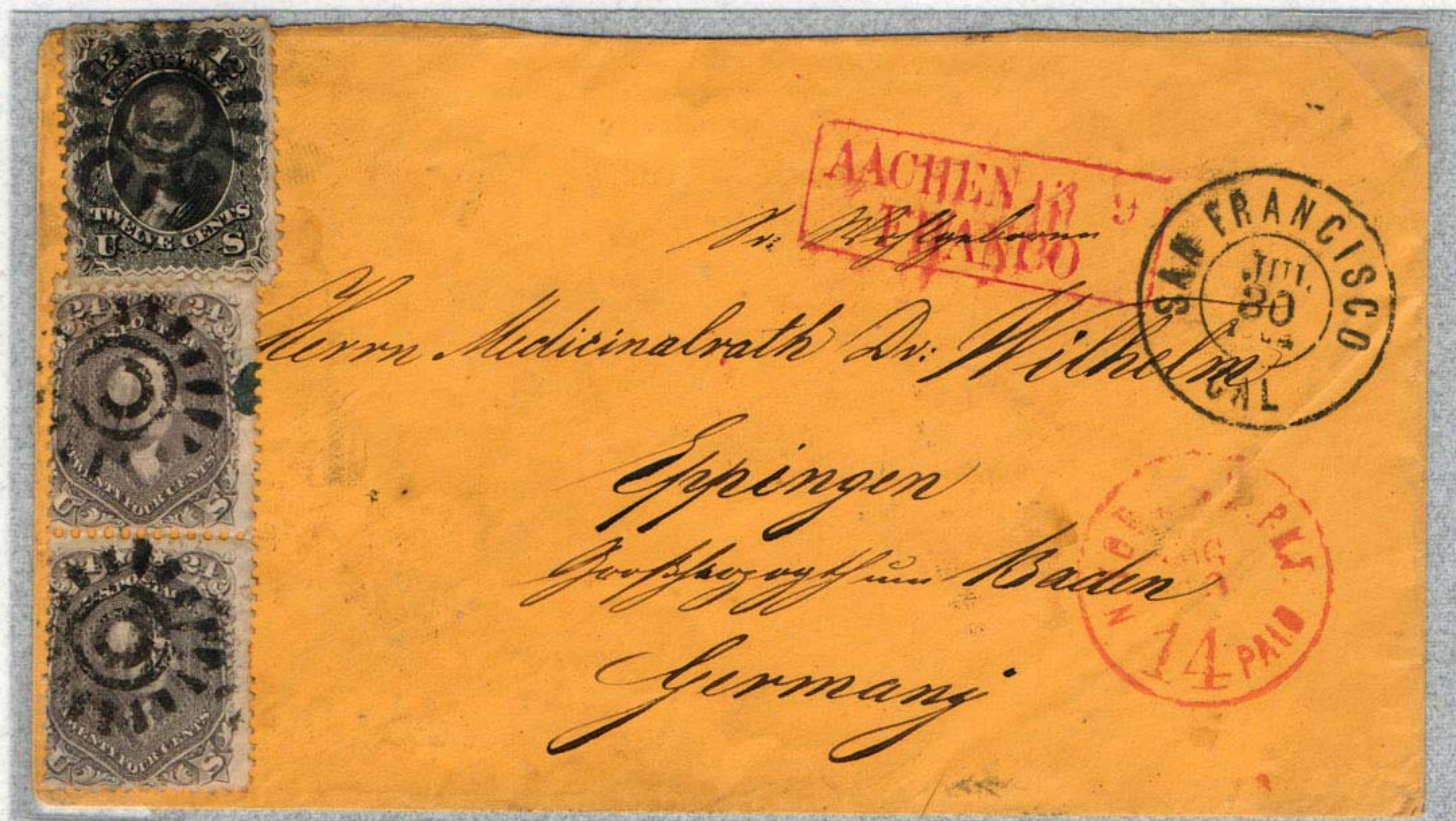
MAR 19, 1867, Type 3
to Germany.

Carried by PCM (blue boxed "Aachen Franco"). 30c franking overpays 28c PCM rate by 2c. "N. York Br. Pkt." exchange office CDS and red "7" credit.

Composed of 6 stamps plus postal stationary, a unique franking.

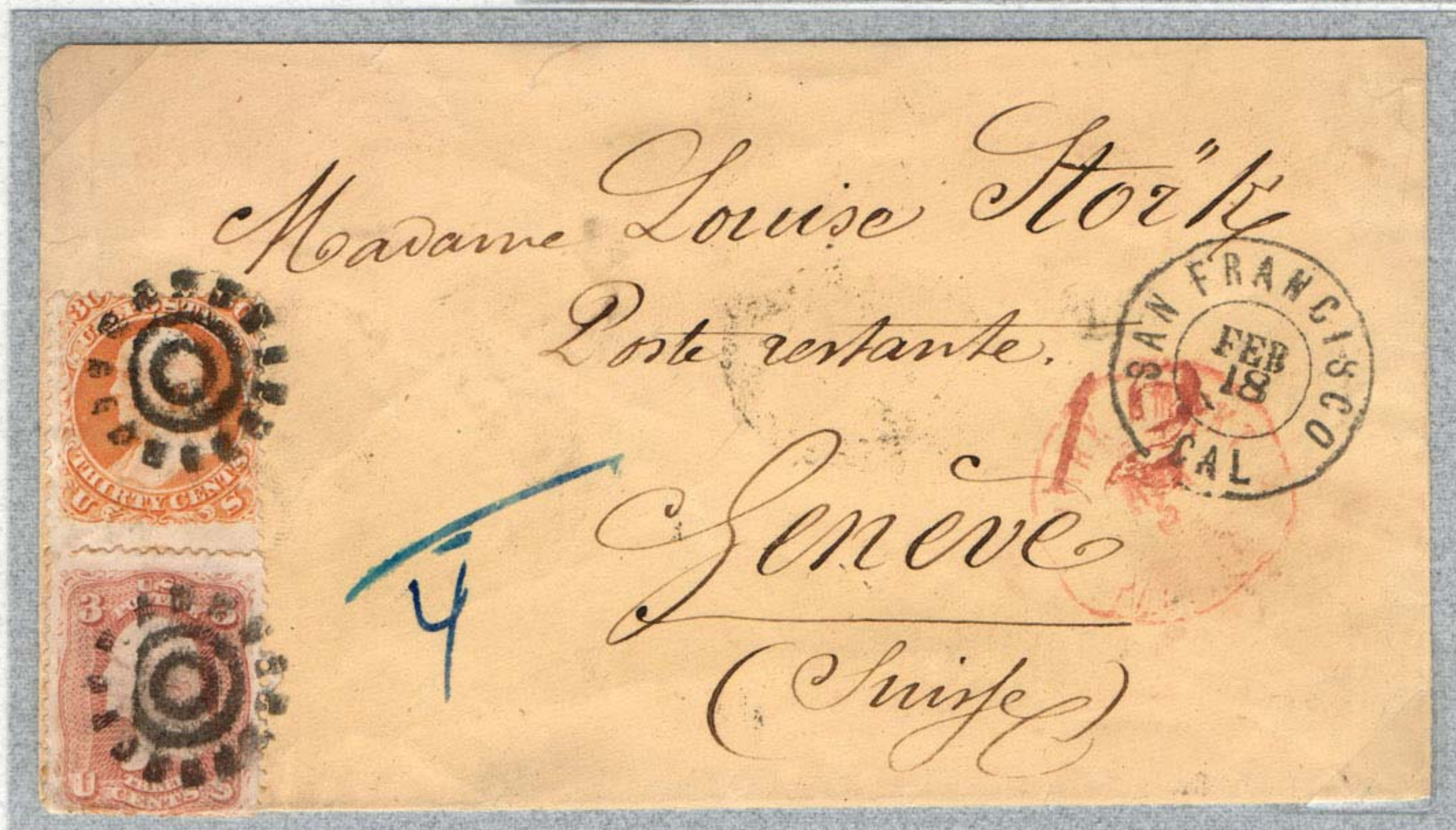
JUL 30, 1864, Type 2
to Baden Germany.

Carried by PCM (red boxed "Aachen Franco"). 60c franking overpays double 28c PCM rate by 4c (30c PCM rate expired May 1863). "N. York Am. Pkt." exchange office CDS and red "14" (double) credit.



FEB 18, 1867, Type 3 to
Switzerland.

33c PCM rate in effect from May 1863 (no boxed "Aachen Franco" marking however). "N. York Am. Pkt." exchange office CDS and red "12" credit handstamp. Blue "/4" indicates amount paid (silbergrochen) beyond Prussian border.



Foreign Destinations - Italy/Switzerland



NOV 16, 1864, Type 3 to Italy.

42c French Mails, double 21c rate.

"New York" exchange office CDS and red "12" credit.



DEC 6, 1865, Type 3 to Italy.

42c French Mails, double 21c rate, overpaid by 1c.

"New York" exchange office CDS and red "24" credit.



MAY 6, 1862, Type 2 to Locarno, Switzerland.

Carried by PCM (red boxed "Aachen Franco"). 35c PCM rate effective until May 1863.

Manuscript red 12 credit.

Foreign Destinations - France



MAR 9, 1867, Type 3 to France.

30c French Mails, double 15c rate. Manuscript "per Steamer Sacramento".

Only Type 3 is found on the 15c Black Lincoln stamp as it was issued in APR 1866, when only the Type 3 cancel was in use.

JUN 29, 1867, Type 3 to France.
 30c French Mails, double 15c rate. Manuscript "Via Steamer".
 "New York" exchange office CDS and red "24" credit.



JUN 9, 1866, Type 3 to France.

15c French Mails, single rate. Manuscript "Via Steamer".

"New York" exchange office CDS and red "12" credit.

Foreign Destinations – Great Britain



MAR 9, 1862, Type 2 to England.

"New York Am. Pkt." exchange office CDS and red "3" credit. Strip of three 10c stamps pay the 29c "West Coast" rate to England (1c overpayment). Rates were standardized and reduced to 24c the next year on July 1, 1863, removing the premium on West Coast mail.



JUN 29, 1867, Type 3 to Scotland. Exact payment of 24c British Mails rate.

Manuscript "Per Str Montana June 29th". The Montana was put in service for the PMSC in OCT, 1866.

"N. York Br. Pkt." exchange office CDS and red "19" credit.

Foreign Destinations – Canada



DEC 12, 1862, Type 2 to Canada.

15c (over 3,000 mile) rate to Canada, U.S. postage pays domestic service to border, while 2-1/2p British Columbia stamp pays Canadian inland postage. **Mixed Franking with U.S. and British Columbia stamps.** No indication of origin as British Columbia stamp was cancelled on arrival at SFPO.

MAR 31, 1864, Type 2 to Canada, originated in Victoria.

15c (over 3,000 mile) rate overpaid by 1c. U.S. postage paid by stamps, Canadian inland postage paid in cash in Victoria. First month of new 10c rate (distance differential eliminated). However, cover still reflects the old rate. Blue oval "Post Office, Victoria Vancouver Island, PAID" handstamp (2c pair lifted and placed lower on cover to display marking).



MAY 2, 1864, Type 2 to Canada.

10c rate to Canada, rate reduced in MAR 1864 vs. above cover 15c rate, overpaid by 2c. Red "U. States, Paid 10" exchange stamp.

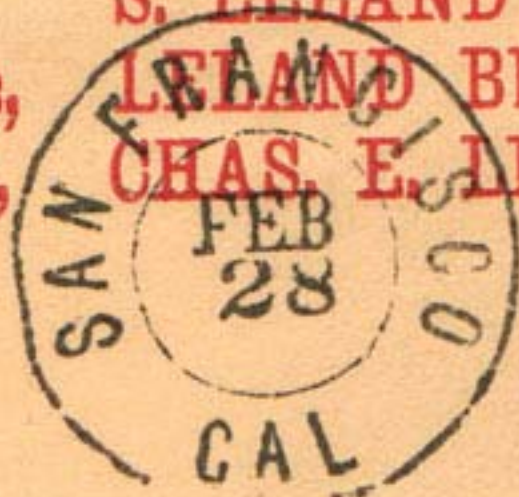


Advertising Use

OCCIDENTAL HOTEL,
METROPOLITAN HOTEL,
UNION HOTEL.
CLARENDON HOTEL,

San Francisco,
New York,
Saratoga Springs,
Saratoga Springs,

LEWIS LELAND
S. LELAND &
LELAND BROT
CHAS. E. LEL

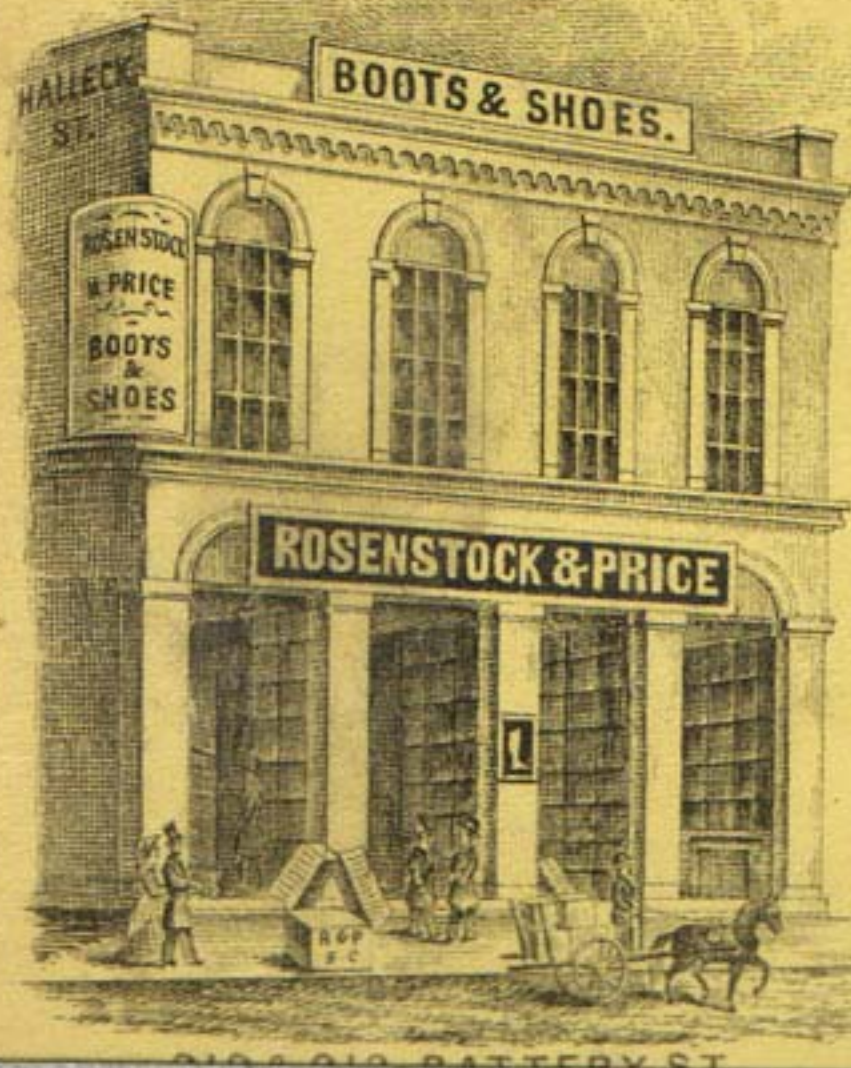


FEB 28 (1864 or later),
Type 3, Hotel Advertiser.
3c rate period, to
Pennsylvania.

*Via Panama
Per Steamer "St. Louis"*

Mrs. J. R. Lanber

Type 2 use on Boots & Shoes
Advertiser. No CDS, but
appears to have been treated
as 2c drop rate.



Mr. J. Mark H. C.
Reeburg

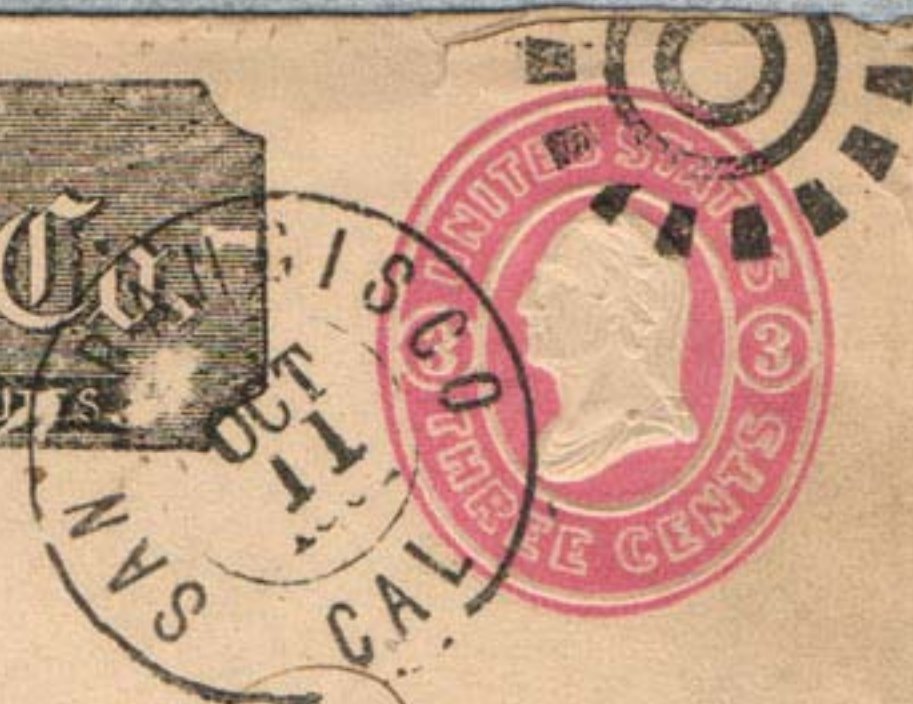
C. W. WESTON & CO.
WHOLESALE AND COMMISSION
DEALERS IN
FRUITS, &c.
PACIFIC FRUIT MARKET,
SAN FRANCISCO.



MAR 4 (1864 or later), Type 3.
Fruit Advertiser.
3c rate period, to Maine.

OCT 11 (1863 or later),
Type 3. Wells Fargo
franked envelope, carried
inside the mails.
3c rate period, to NY.

PAID
Wells Fargo & Co.
OVER OUR CALIFORNIA AND COAST ROUTES



C. L. Steels, Esq.
Chf. Clerk, Ins. Department
Albany N.Y.

Interesting Rates, Markings & Destinations

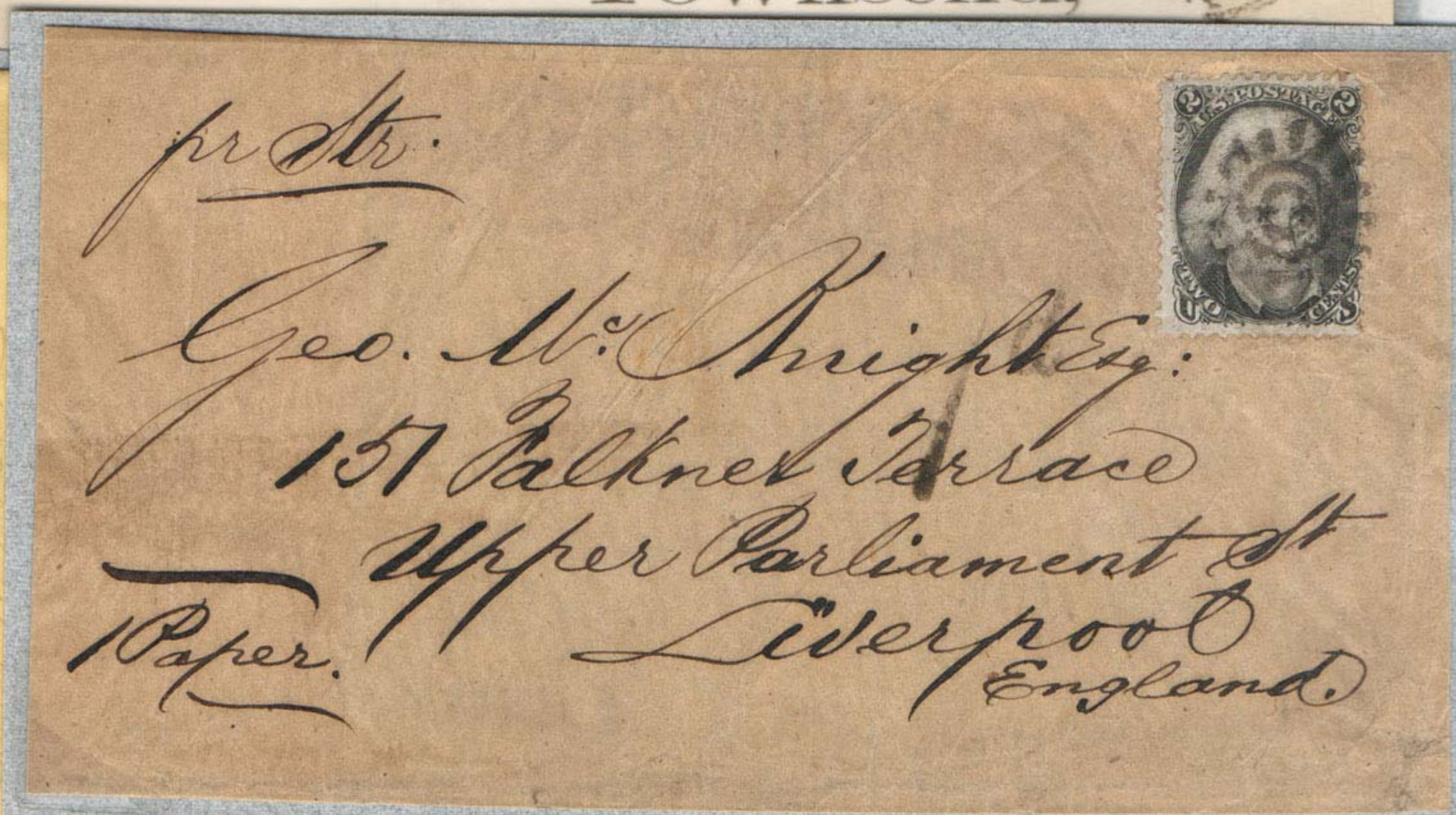
SEP 4, 1863, Type 2.
 Letter datelined London,
 England July 25, 1863.
 Privately carried to SF
 then entered mails for
 Mazatlan, Mexico, at
 single 10c rate.



OCT 10, 1865,
 Type 3. Triple
 3c rate, via
 Steamer, to Mass.

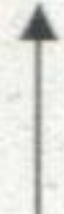


JUL 22, 1863,
 Type 2.
 Quadruple 3c rate
 to Ohio. First
 month of 3c rate.



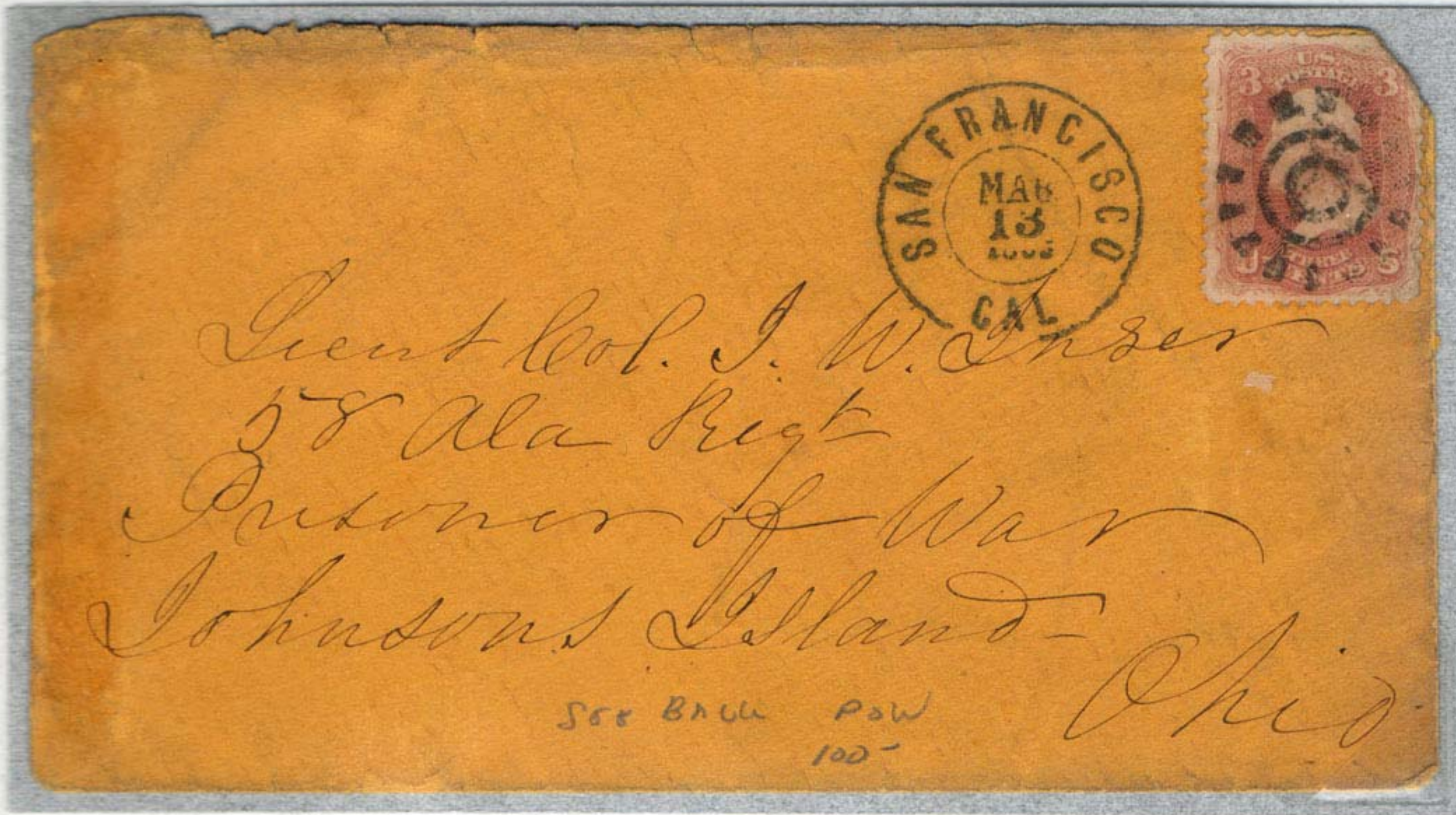
District of Ohio.

DYMK



Newspaper wrapper, 2c newspaper rate, Type 2, to England.

Interesting Rates, Markings & Destinations



MAR 13, 1865, Type 3.
3c rate period, to Prisoner of War at Johnson's Island, Ohio. The only cogwheel cover to this destination observed by the exhibitor.



Reverse side of cover showing inspection of letter by censor

OCT 9, 1863, Type 2, 3c rate period, to Ohio.

All over Lumber Advertiser, with "Missent" in manuscript, although there is no indication of where cover was misrouted.



DEC 15, 1862, Type 1. 10c rate period to New Jersey. Attempted use of demonetized 1857 issue. Rated "10" due as stamp was not accepted. The 1857 issue was no longer valid as of JAN 1862 at the SFPO.



Type 2 cancel (used DEC 1861 or later) on 10c Green demonetized 1857 issue.

Late Use

The exhibitor is aware of 16 cogwheel items in this era (1868 Grill Issues thru 1887), six of which are shown on this page. Use in this period is very sporadic and few examples exist.



24c Grill Issue of 1868.

Type 2 cancel returns after several years of only Type 3 use.



1879 Brown Postage Due Issues with Type 2.

More than a 10 year gap since the previous use of this cancel, but it is not understood why this 're-surfaced' after a long hiatus.



1c Re-engraved Issue of 1881 with Type 2.



1884 Red-Brown Postage Due Issue with Type 2.



2c New Design and Color Issue of 1887 with Type 2.

The latest use of the cogwheel cancel observed by the exhibitor.