

NORWICH TOWN

ESTABLISHED --- 21 APRIL 1836
FORMERLY NORWICH
POSTMASTERS

JOHN HYDE ----- 21 APRIL 1836
 HENRY HARLAND ----- 5 OCTOBER 1836
 JOHN T. WAIT ----- 3 OCTOBER 1840
 JOHN HYDE ----- 28 JUNE 1841
 HENRY B. TRACY ----- 18 JUNE 1844
 HENRY MCNEELY ----- 12 APRIL 1850
 ELISHA F. ROGERS ----- 22 JULY 1853
 HENRY B. TRACY ----- 1 JULY 1854
 GEORGE D. FULLER ----- 4 JUNE 1862
 CHARLES T. SMITH ----- 14 AUGUST 1867
 JABEZ S. LATHROP ----- 27 APRIL 1869
 GEORGE D. FULLER ----- 20 MARCH 1871
 JOHN MANNING ----- 14 FEBRUARY 1881
 GIDEON A. RAY ----- 18 JUNE 1883
 JAS. S. GOODRICH -- 11 DECEMBER 1886
 G. AVERY RAY ----- 23 MARCH 1889
 JAMES BUSSEY ----- 25 NOVEMBER 1893
 HERBERT W. HALE ----- 7 JUNE 1897
 HERBERT S. YOUNG ----- 25 MARCH 1903

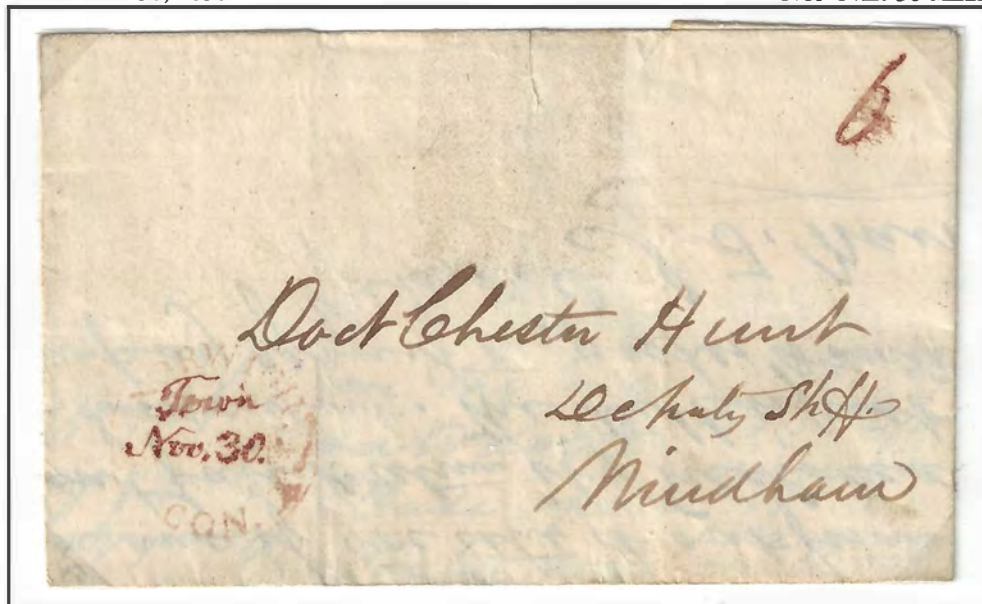


NORWICH. Town CON.
 27.5MM CDS (mspt date/town)
 RED
 E: 1836 NOVEMBER 30
 L: 1840 JULY 3

6

NOVEMBER 30, 1836

NOT OVER 30 MILES



ACT OF APRIL 9, 1816
 EFFECTIVE MAY 1, 1816
 NOT OVER 30 MILES ----- 6 CENTS
 30 TO 80 MILES ----- 10 CENTS
 80 TO 150 MILES -- 12 1/2 CENTS
 150 TO 400 MILES -- 18 1/2 CENTS
 OVER 400 MILES ----- 25 CENTS
 ACT OF MARCH 3, 1825
 EFFECTIVE MAY 1, 1825
 150 TO 400 MILES -- 18 3/4 CENTS

16
Jesseiah Huntington Esq
March



10

Amos Townsend Esq
Cashier of
New Haven Bank
New Haven



NORWICH TOWN

RATES OF 1816

ACT OF APRIL 9, 1816
 EFFECTIVE MAY 1, 1816
 NOT OVER 30 MILES ---- 6 CENTS
 30 TO 80 MILES ----- 10 CENTS
 80 TO 150 MILES -- 12 1/2 CENTS
 150 TO 400 MILES -- 18 1/2 CENTS
 OVER 400 MILES ----- 25 CENTS
 ACT OF MARCH 3, 1825
 EFFECTIVE MAY 1, 1825
 150 TO 400 MILES -- 18 3/4 CENTS



NORWICH. Town CON.
 27.5MM CDS (mspt
 date/town)
 RED
 E: 1836 N O V E M B E R 30
 L: 1840 S E P T E M B E R 7

SEPTEMBER 7, 1840

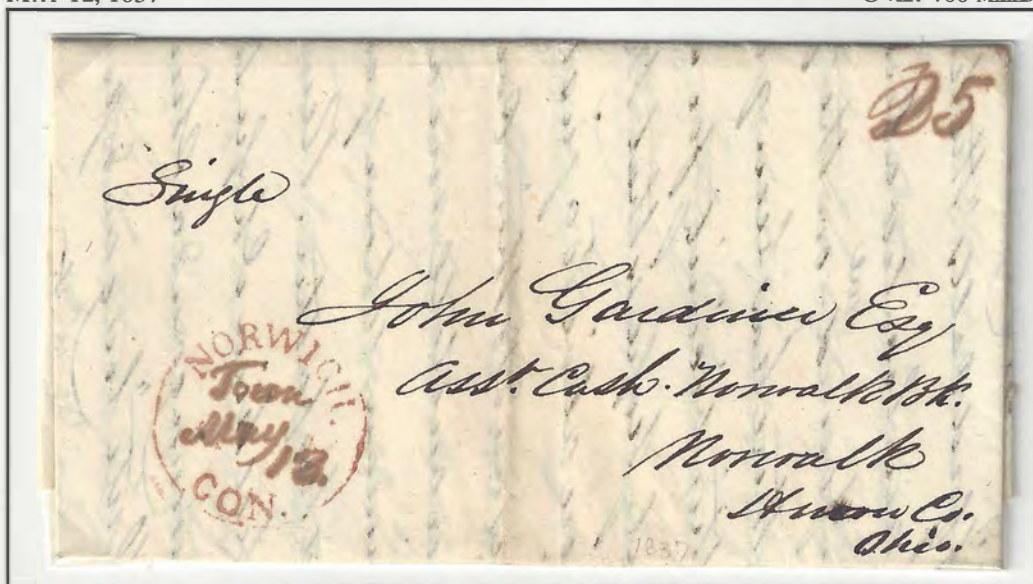
80 TO 150 MILES



12 1/2

MAY 12, 1837

OVER 400 MILES



25

NORWICH TOWN

RATES OF 1816

BLACK TOWN VARIETY



10

NORWICH. Town CON.
27.5MM CDS (mspt date/town)

RED / Bluchmspt

E: 1836 NOVEMBER 30

L: 1840 JULY 3

1838 Sept 7
1838 Dec 12

DECEMBER 12, 1838

30 TO 80 MILES



ACT OF APRIL 9, 1816
EFFECTIVE MAY 1, 1816
NOT OVER 30 MILES ---- 6 CENTS
30 TO 80 MILES ----- 10 CENTS
80 TO 150 MILES -- 12 1/2 CENTS
150 TO 400 MILES -- 18 1/2 CENTS
OVER 400 MILES ----- 25 CENTS
ACT OF MARCH 3, 1825
EFFECTIVE MAY 1, 1825
150 TO 400 MILES -- 18 3/4 CENTS

NORWICH TOWN

RATES OF 1816
DOUBLE RATE

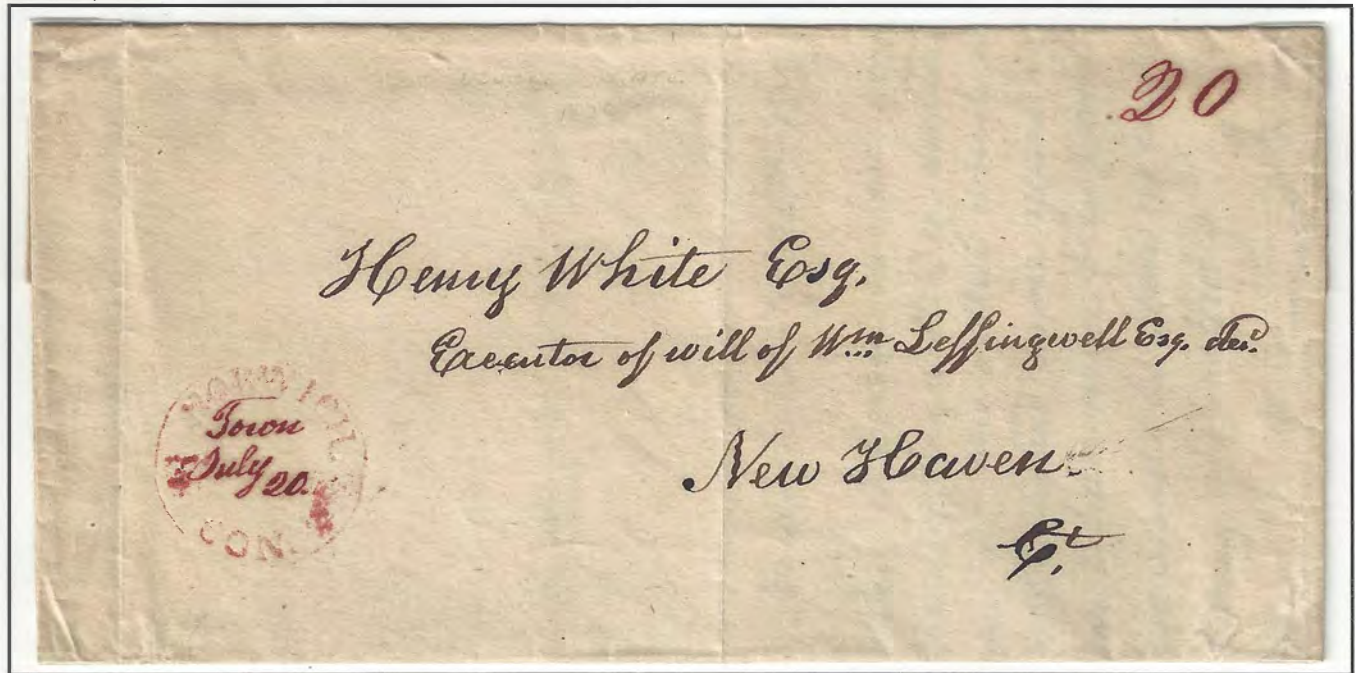


20

NORWICH. Town CON.
27.5MM CDS (mspt date/town)
RED
E: 1836 NOVEMBER 30
L: 1840 JULY 3

JULY 20, 1839

30 TO 80 MILES



ACT OF APRIL 9, 1816
EFFECTIVE MAY 1, 1816
NOT OVER 30 MILES ---- 6 CENTS
30 TO 80 MILES ----- 10 CENTS
80 TO 150 MILES -- 12 1/2 CENTS
150 TO 400 MILES -- 18 1/2 CENTS
OVER 400 MILES ----- 25 CENTS
ACT OF MARCH 3, 1825
EFFECTIVE MAY 1, 1825
150 TO 400 MILES -- 18 3/4 CENTS

NORWICHTOWN

TURNUED & FOWARDED

FEBRUARY 19, 1839

30 TO 80 MILES



LETTER WAS INITIALLY SENT FROM SUTTON, VT TO PHINEHAS MINOR IN LITCHFIELD, CT. MR. MINOR ADDED TO THE LETTER, HE RE-MAILED THE LETTER FROM LITCHFIELD TO JABEZ HUNTINGTON IN NORWICH. MR. HUNTINGTON BEING ABSENT FROM NORWICH AND IN HARTFORD, THE LETTER WAS FORWARDED THERE.

PAID

PAID
19x6MM
RED
M: 1839
L: 1839 FEBRUARY 19

NORWICH. Town CON.
27.5MM CDS (mspt date/town)
RED
M: 1839 SEPTEMBER 7
L: 1840 SEPTEMBER 7



NORWICHTOWN

RATES OF 1816

ACT OF APRIL 9, 1816
 EFFECTIVE MAY 1, 1816
 NOT OVER 30 MILES ---- 6 CENTS
 30 TO 80 MILES ----- 10 CENTS
 80 TO 150 MILES -- 12 1/2 CENTS
 150 TO 400 MILES -- 18 1/2 CENTS
 OVER 400 MILES ----- 25 CENTS
 ACT OF MARCH 3, 1825
 EFFECTIVE MAY 1, 1825
 150 TO 400 MILES -- 18 3/4 CENTS

NORWICH. Town CON.
 27.5MM CDS (mspt
 date/town)
 RED
 E: 1836 NOVEMBER 30
 L: 1840 SEPTEMBER 7



APRIL 12, 1840

NOT OVER 30 MILES



6

JULY 3, 1840

30 TO 80 MILES



10

10

Charles Perkins Esq

WORWICH
TOWN
April
8th
CON.

Litchfield

Connecticut

NORWICHTOWN



6

NORWICHTOWN Ct.
 30MM CDS
 RED/ORANGE/BRICK
 E: 1840 DECEMBER 3
 L: 1850 APRIL 29
 BLUE
 E: 1850 MAY 14
 L: 1860 MARCH 20
 BLACK
 E: 1860 AUGUST 13
 L: 1886 MARCH 9

DECEMBER 3, 1840

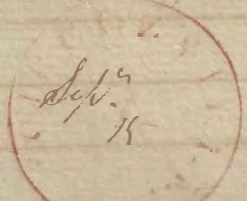
NOT OVER 30 MILES



ACT OF APRIL 9, 1816
 EFFECTIVE MAY 1, 1816
 NOT OVER 30 MILES - - - - 6 CENTS
 30 TO 80 MILES - - - - - 10 CENTS
 80 TO 150 MILES - - 12 1/2 CENTS
 150 TO 400 MILES - - 18 1/2 CENTS
 OVER 400 MILES - - - - 25 CENTS
 ACT OF MARCH 3, 1825
 EFFECTIVE MAY 1, 1825
 150 TO 400 MILES - - 18 3/4 CENTS

20 + 5 on face ✓

25



Messrs Allen & Thurman

Messrs Allen & Thurman

Attorneys at Law, Circleville

Pickaway County
Ohio

Single



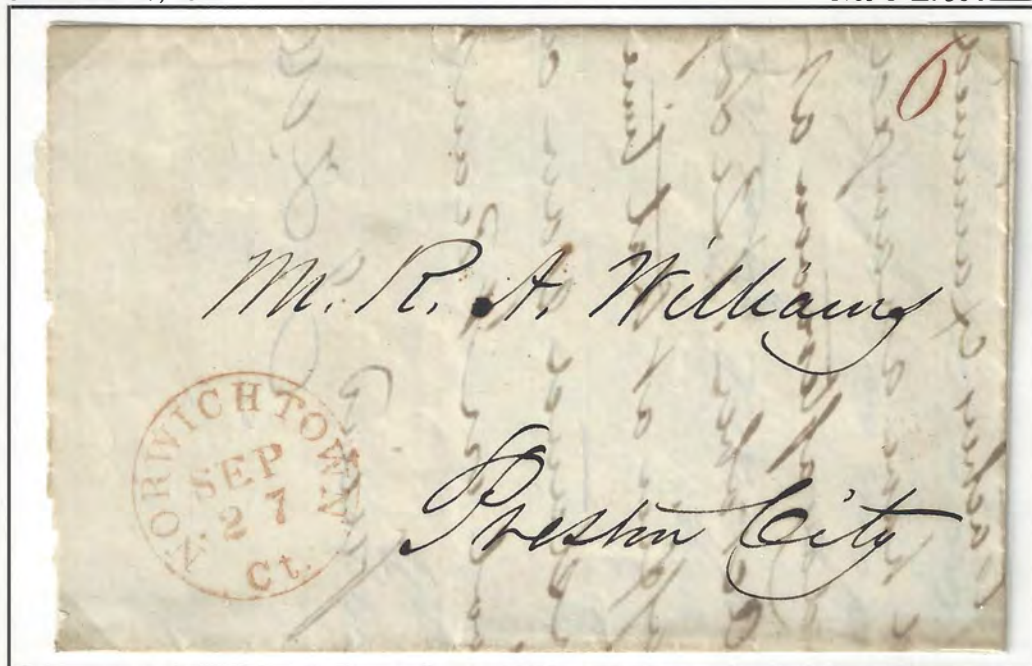
248-41

NORWICHTOWN

RATES OF 1816

SEPTEMBER 27, 1841

NOT OVER 30 MILES



0



NORWICHTOWN Ct.
 30MM CDS
 RED/ORANGE/BRICK
 E: 1841 JULY 13
 L: 1850 APRIL 29
 BLUE
 E: 1850 MAY 14
 L: 1860 MARCH 20
 BLACK
 E: 1860 AUGUST 13
 L: 1886 MARCH 9

10

SEPTEMBER 10, 1841

30 TO 80 MILES



ACT OF APRIL 9, 1816
 EFFECTIVE MAY 1, 1816
 NOT OVER 30 MILES ---- 6 CENTS
 30 TO 80 MILES ----- 10 CENTS
 80 TO 150 MILES -- 12 1/2 CENTS
 150 TO 400 MILES -- 18 1/2 CENTS
 OVER 400 MILES ----- 25 CENTS
 ACT OF MARCH 3, 1825
 EFFECTIVE MAY 1, 1825
 150 TO 400 MILES -- 18 3/4 CENTS

NORWICHTOWN

RATES OF 1816



12½

NORWICHTOWN Ct.
 30MM CDS
 RED/ORANGE/BRICK
 E: 1840 DECEMBER 3
 L: 1850 APRIL 29
 BLUE
 E: 1850 MAY 14
 L: 1860 MARCH 20
 BLACK
 E: 1860 AUGUST 13
 L: 1886 MARCH 9

APRIL 27, 1841

80 TO 150 MILES



ACT OF APRIL 9, 1816
 EFFECTIVE MAY 1, 1816
 NOT OVER 30 MILES ---- 6 CENTS
 30 TO 80 MILES ----- 10 CENTS
 80 TO 150 MILES -- 12 1/2 CENTS
 150 TO 400 MILES -- 18 1/2 CENTS
 OVER 400 MILES ----- 25 CENTS
 ACT OF MARCH 3, 1825
 EFFECTIVE MAY 1, 1825
 150 TO 400 MILES -- 18 3/4 CENTS

NORWICHTOWN

RATES OF 1816

NORWICHTOWN Ct.
 30MM CDS
 RED/ORANGE//BRICK
 E: 1840 DECEMBER 3
 L: 1848 AUGUST 28
 BROWN
 E: 1848 OCTOBER 10
 L: 1850 APRIL 29
 BLUE
 E: 1850 MAY 14
 L: 1860 MARCH 20
 BLACK
 E: 1860 AUGUST 13
 L: 1886 MARCH 9



PAID

PAID
 16x4MM
 RED/ORANGE//BRICK
 E: 1845 FEBRUARY 15 1843 Apr 27
 L: 1848 AUGUST 28
 BROWN
 E: 1848 OCTOBER 10
 L:
 BLUE
 E: 1851 FEBRUARY 19
 L: 1851 JUNE 2

25

FEBRUARY 15, 1845

SINGLE RATE

OVER 400 MILES



ACT OF APRIL 9, 1816
 EFFECTIVE MAY 1, 1816

PREPAID OR NOT

NOT OVER 30 MILES ----- 6 CENTS
 30 TO 80 MILES ----- 10 CENTS
 80 TO 150 MILES -- 12 1/2 CENTS
 150 TO 400 MILES -- 18 1/2 CENTS
 OVER 400 MILES ----- 25 CENTS
 WAY - ADDITIONAL ----- 2 CENTS
 ACT OF MARCH 3, 1825
 EFFECTIVE MAY 1, 1825
 150 TO 400 MILES -- 18 3/4 CENTS
 WAY - ADDITIONAL ----- 1 CENT

NORWICHTOWN



MISSENT AND FORWARDI

NORWICHTOWN Ct.
 30MM CDS
 RED/ORANGE/BRICK
 E: 1840 DECEMBER 3
 L: 1850 APRIL 29
 BLUE
 E: 1850 MAY 14
 L: 1860 MARCH 20
 BLACK
 E: 1860 AUGUST 13
 L: 1886 MARCH 9

Jan^o 5/10

SEPTEMBER 28, 1849



THIS UNPAID LETTER FROM READING, PA., ADDRESSED TO MISS SARAH A. LORD WAS MAILED TO NORWICH TOWN CT.. THE NORWICH TOWN POST OFFICE FORWARDED THE LETTER TO BOSTON. AN ADDITIONAL 5 CENTS WAS ADDED TO THE LETTER FOR THIS SERVICE:

ACT OF MARCH 3, 1845
 EFFECTIVE JULY 1, 1845
 PREPAID OR NOT
 UNDER 300 MILES ---- 5 CENTS
 OVER 300 MILES ----- 10 CENTS
 LOCAL (DROP) LETTERS - 2 CENTS
 CIRCULARS (1 SHEET) --- 2 CENTS

NORWICHTOWN

RATES OF 1845

JULY 29, 1845

SINGLE RATE

UNDER 300 MILES



NORWICHTOWN Ct.
 30MM CDS
 RED/ORANGE//BRICK
 E: 1840 DECEMBER 3
 L: 1848 AUGUST 28
 BROWN
 E: 1848 OCTOBER 10
 L: 1850 APRIL 29
 BLUE
 E: 1850 MAY 14
 L: 1860 MARCH 20
 BLACK
 E: 1860 AUGUST 13
 L: 1886 MARCH 9

5
 9x12MM
 RED//BRICK
 E: 1845 JULY 29
 L: 1850 APRIL 29
 BROWN
 E: 1848 OCTOBER 10
 L: 1850 APRIL 29
 BLUE
 E: 1850 MAY 14
 L: 1851 JUNE 2

5

ACT OF MARCH 3, 1845
 EFFECTIVE JULY 1, 1845
 UNDER 300 MILES -- 5 CENTS
 OVER 300 MILES -- 10 CENTS
 LOCAL (DROP) ----- 2 CENTS

PREPAID
SINGLE RATE

NOVEMBER 12, 1846

UNDER 300 MILES

PAID

PAID
 16x4MM
 RED/ORANGE//BRICK
 E: 1845 FEBRUARY 15
 L: 1848 AUGUST 28
 BROWN
 E: 1848 OCTOBER 10
 L:
 BLUE
 E: 1851 FEBRUARY 19
 L: 1851 JUNE 2



NORWICH TOWN

1845 RATE

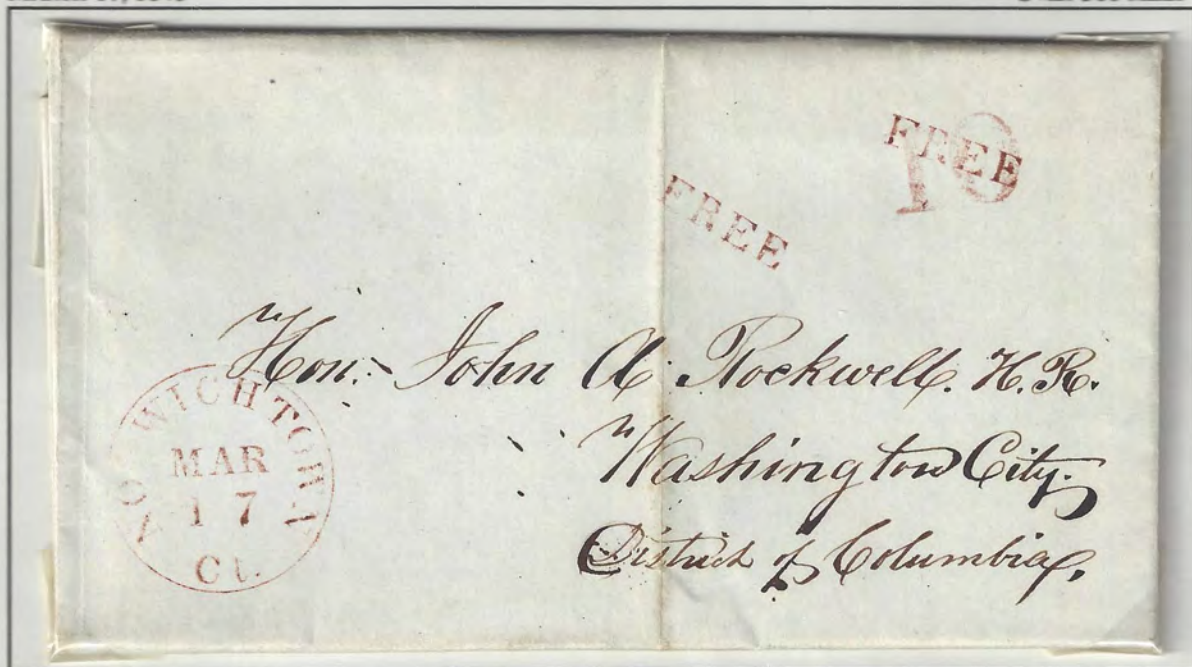
NORWICH TOWN Ct.
 30MM CDS
 RED/O RANGE/BRICK
 E: 1840 DECEMBER 3
 L: 1850 APRIL 29
 BLUE
 E: 1850 MAY 14
 L: 1860 MARCH 20
 BLACK
 E: 1860 AUGUST 13
 L: 1886 MARCH 9

ACT OF MARCH 3, 1845
 EFFECTIVE JULY 1, 1845
 UNDER 300 MILES -- 5 CENTS
 OVER 300 MILES -- 10 CENTS
 LOCAL (DROP) ----- 2 CENTS



MARCH 17, 1846

OVER 300 MILES



RATED 10 CENTS POSTAGE, BUT REMARKED FREE. LETTERS TO OR FROM MEMBERS OF CONGRESS WERE SENT FREE.

10

10
 17x12MM
 RED/BRICK
 E: 1846 MARCH 17
 L: 1848 MAY 13
 BLUE
 E: 1850 JULY 5
 L: 1851 APRIL 10

FREE

FREE
 18x4MM
 RED/O RANGE/BRICK
 E: 1841 JULY 13
 L: 1846 MARCH 17
 BLACK
 E: 1865 APRIL 13
 L: 1865 NOVEMBER 4

18450822

NORWICHTOWN

UNITED STATES 5 CENT 1847



PAID

PAID
16x4MM
RED
E: 1848 AUGUST 28
L:
BLUE
E: 1851 APRIL 18
L: 1851 JUNE 2



NORWICHTOWN Ct.
30MM CDS
RED/ORANGE/BRICK
E: 1841 JULY 13
L: 1850 APRIL 29
BLUE
E: 1850 MAY 14
L: 1860 MARCH 20
BLACK
E: 1860 AUGUST 13
L: 1886 MARCH 9

AUGUST 28, 1848

UNDER 300 MILES



ACCORDING TO PUBLISHED RECORDS THE NORWICHTOWN AND NORWICH POST OFFICES NEVER RECEIVED THESE FIRST ISSUE STAMPS. IF CORRECT THESE STAMPS COULD HAVE BEEN SUPPLIED BY STEPHEN B. ROATH OF NORWICH WHO WAS THE ROUTE AGENT (POSTAL CLERK) ASSIGNED TO THE NORWICH AND WORCESTER RAILROAD. ON AUGUST 19, 1848 HE WAS SENT 500 STAMPS OF THE 5 CENT AND 100 STAMPS OF THE 10 CENT ISSUE WHICH HE RECEIVED ON SEPTEMBER 5, 1848. HE SUBSEQUENTLY RECEIVED 600 MORE 5 CENT AND 100 OF THE 10 CENT STAMPS ON JANUARY 18, 1849. A FINAL RECEIPT DATED APRIL 21, 1849 WAS FOR AN ADDITIONAL 400 OF THE 5 CENT STAMP.

ACT OF MARCH 3, 1845
EFFECTIVE JULY 1, 1845
PREPAID OR NOT
UNDER 300 MILES -- 5 CENTS
OVER 300 MILES -- 10 CENTS
LOCAL (DROP) ----- 2 CENTS

NORWICH TOWN

UNITED STATES 5 CENT 1847



7 BAR
17x18MM
BRICK
E: 1849 AUGUST 25
L:
BLUE
E: 1850 OCTOBER 10
L: 1851 FEBRUARY 4



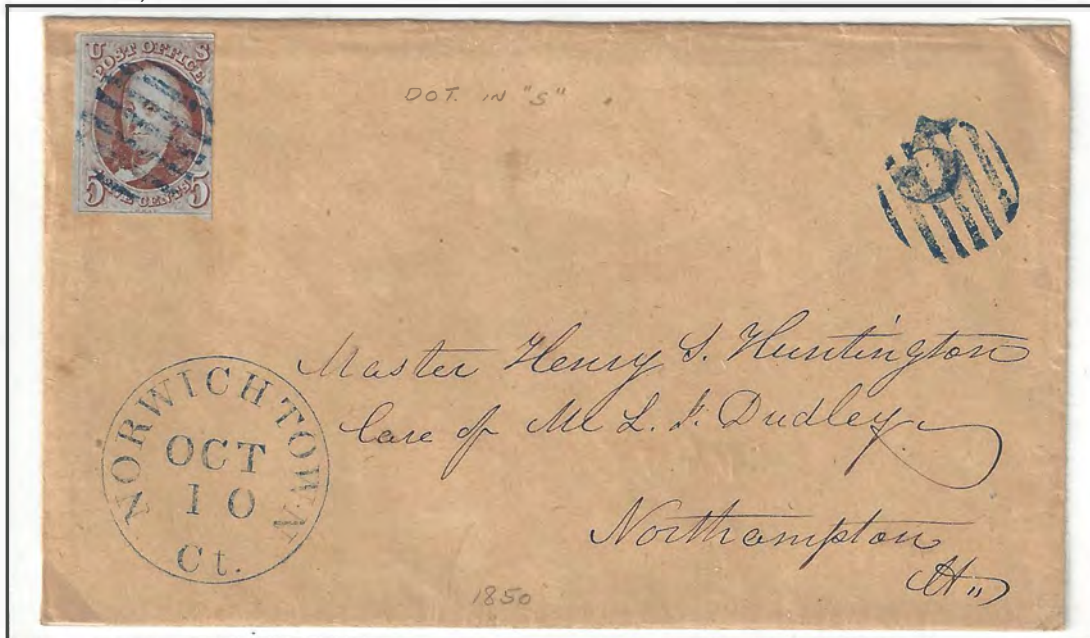
5
9x12MM
RED/BRICK
E: 1847 JANUARY 9
L: 1850 APRIL 29
BLUE
E: 1850 MAY 14
L: 1851 JUNE 2



NORWICH TOWN Ct.
30MM CDS
RED/ORANGE/BRICK
E: 1841 JULY 13
L: 1850 APRIL 29
BLUE
E: 1850 MAY 14
L: 1860 MARCH 20
BLACK
E: 1860 AUGUST 13
L: 1886 MARCH 9

OCTOBER 10, 1850

UNDER 300 MILES



DOT IN S VARIETY OF 1847 STAMP.

5 RATE HANDSTAMP APPLIED IN ERROR OR PRIOR TO THE ADDITION OF THE 5 CENT 1847.

ACT OF MARCH 3, 1845
EFFECTIVE JULY 1, 1845
PREPAID OR NOT
UNDER 300 MILES -- 5 CENTS
OVER 300 MILES -- 10 CENTS
LOCAL (DROP)----- 2 CENTS

NORWICHTOWN

ACT OF MARCH 3, 1845
 EFFECTIVE JULY 1, 1845
 UNDER 300 MILES -- 5 CENTS
 OVER 300 MILES -- 10 CENTS
 LOCAL (DROP) ----- 2 CENTS

RATES OF 1845

5

5
 9x12MM
 RED/BRICK
 E: 1846 NOVEMBER 12
 L: 1850 APRIL 29
 BROWN
 E: 1848 OCTOBER 10
 L: 1850 APRIL 29
 BLUE
 E: 1850 MAY 14
 L: 1851 JUNE 2

OCTOBER 10, 1848

PREPAID
SINGLE RATE

UNDER 300 MILES



PAID

PAID
 16x4MM
 RED/ORANGE//BRICK
 E: 1845 FEBRUARY 15
 L: 1848 AUGUST 28
 BROWN
 E: 1848 OCTOBER 10
 L:
 BLUE
 E: 1851 FEBRUARY 19
 L: 1851 JUNE 2



NORWICHTOWN Ct.
 30MM CDS
 RED/ORANGE//BRICK
 E: 1840 DECEMBER 3
 L: 1848 AUGUST 28
 BROWN
 E: 1848 OCTOBER 10
 L: 1850 APRIL 29
 BLUE
 E: 1850 MAY 14
 L: 1860 MARCH 20
 BLACK
 E: 1860 AUGUST 13
 L: 1886 MARCH 9

APRIL 29, 1850

SINGLE RATE

UNDER 300 MILES

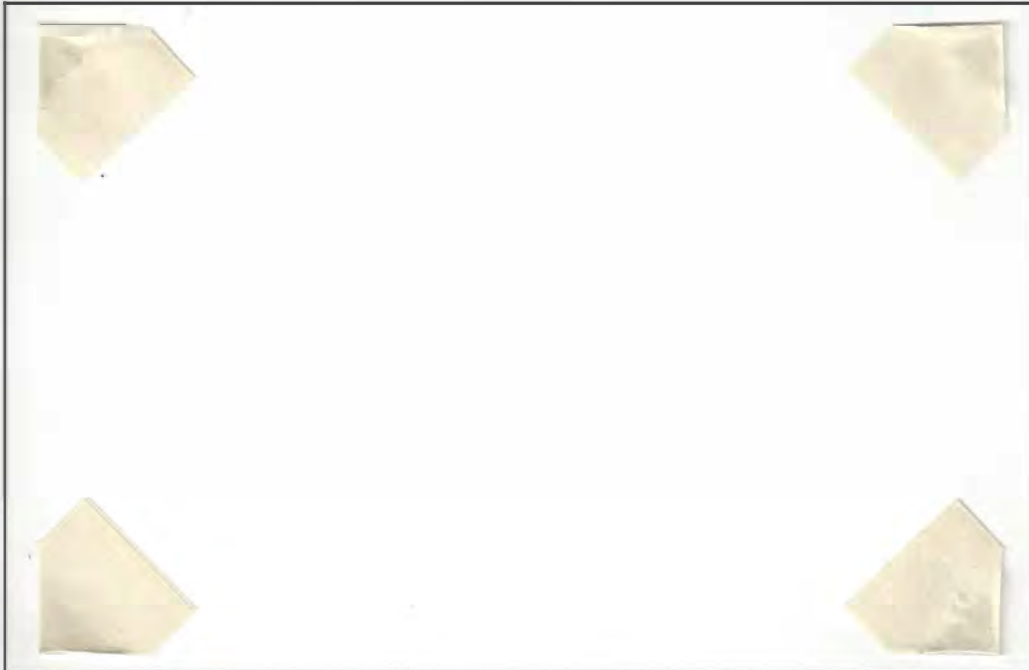


NORWICHTOWN

1845 RATE

MAY 13, 1848

OVER 300 MILES



ACT OF MARCH 3, 1845
 EFFECTIVE JULY 1, 1845
 UNDER 300 MILES -- 5 CENTS
 OVER 300 MILES -- 10 CENTS
 LOCAL (DROP) ----- 2 CENTS

10

10
 17X12MM
 RED/BRICK
 E: 1846 MARCH 17
 L: 1848 MAY 13
 BLUE
 E: 1850 JULY 5
 L: 1851 APRIL 10



APRIL 24, 1850

OVER 300 MILES



NORWICHTOWN Ct.
 30MM CDS
 RED/ORANGE/BRICK
 E: 1840 DECEMBER 3
 L: 1850 APRIL 29
 BLUE
 E: 1850 MAY 14
 L: 1860 MARCH 20
 BLACK
 E: 1860 AUGUST 13
 L: 1886 MARCH 9



LETTER WAS INITIALLY MIS-RATED AT FIVE CENTS, THEN CORRECTED TO TEN CENTS.

NORWICHTOWN

ACT OF MARCH 3, 1845

EFFECTIVE JULY 1, 1845

PREPAID OR NOT

UNDER 300 MILES -- 5 CENTS

OVER 300 MILES -- 10 CENTS

LOCAL (DROP) ----- 2 CENTS



NORWICHTOWN Ct.

30MM CDS

RED/ORANGE/BRICK

E: 1841 JULY 13

L: 1850 APRIL 29

BLUE

E: 1850 MAY 14

L: 1860 MARCH 20

BLACK

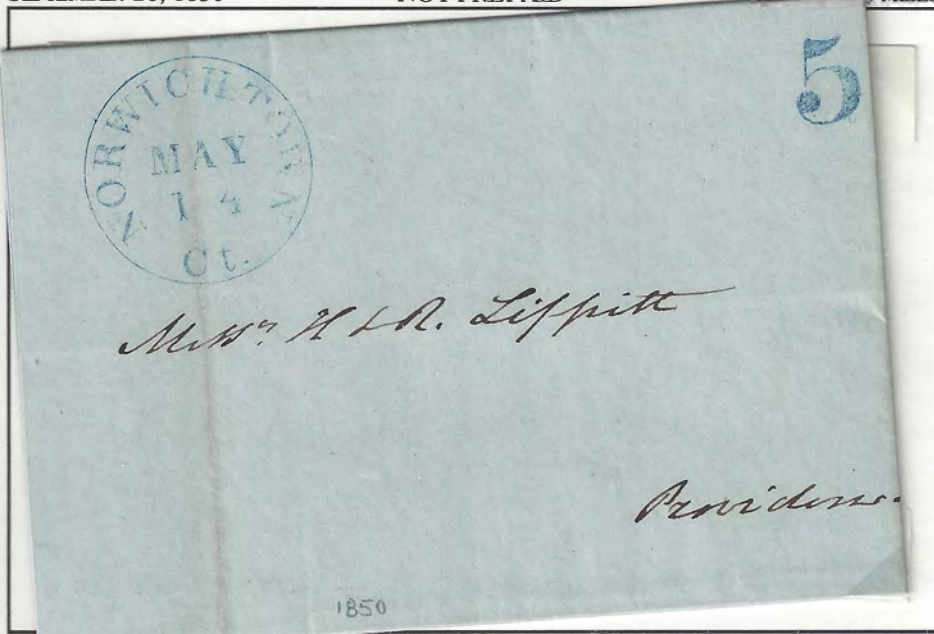
E: 1860 AUGUST 13

L: 1886 MARCH 9

SEPTEMBER 20, 1850

NOT PREPAID

UNDER 300 MILES



5

5

9x12MM

RED/BRICK

E: 1847 JANUARY 9

L: 1850 APRIL 29

BLUE

E: 1850 MAY 14

L: 1851 JUNE 2

JUNE 2, 1851

PREPAID

UNDER 300 MILES

PAID

PAID

16x4MM

RED

E: 1848 AUGUST 28

L:

BLUE

E: 1851 APRIL 18

L: 1851 JUNE 2



PAID

5

paid

Mr Isaac Crosby
North Andover
Mass

ANDOVER MASS
FEB 19
1851

1851
dy

NORWICH TOWN

RATES OF 1845

10

10
 17x12MM
 RED/BRICK
 E: 1846 MARCH 17
 L: 1848 MAY 13
 BLUE
 E: 1850 JULY 5
 L: 1851 APRIL 14

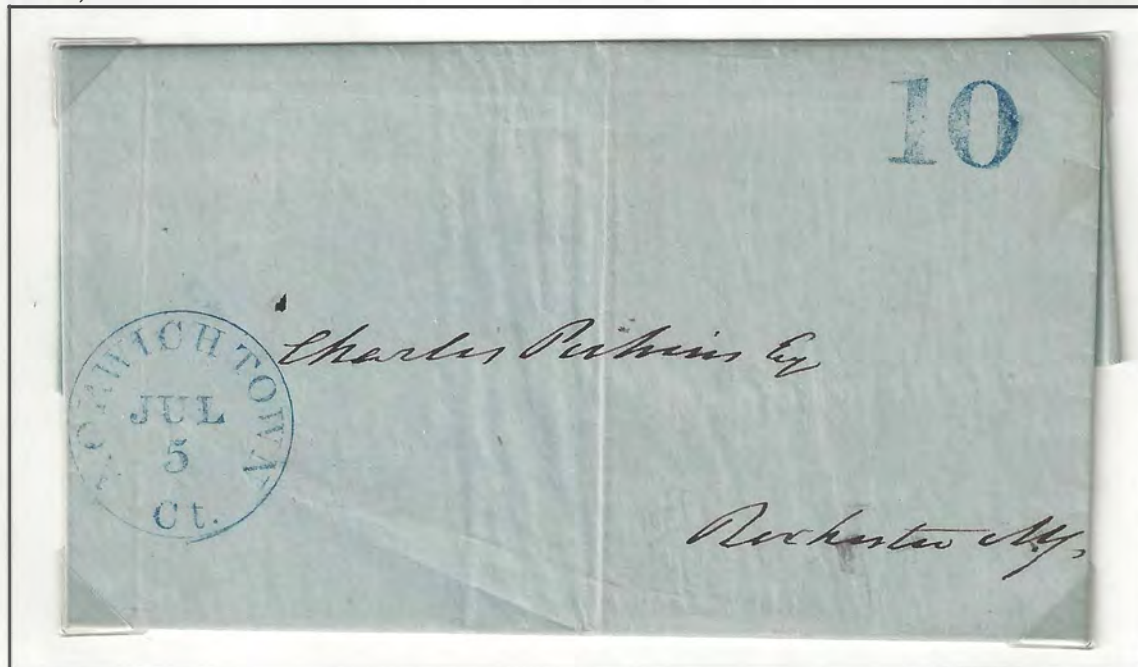
ACT OF MARCH 3, 1845
 EFFECTIVE JULY 1, 1845
 UNDER 300 MILES -- 5 CENTS
 OVER 300 MILES -- 10 CENTS
 LOCAL (DROP) ---- 2 CENTS



JULY 5, 1850

SINGLE RATE

OVER 300 MILES



NORWICH TOWN Ct.
 30MM CDS
 RED/ORANGE//BRICK
 E: 1840 DECEMBER 3
 L: 1848 AUGUST 28
 BROWN
 E: 1848 OCTOBER 10
 L: 1850 APRIL 29
 BLUE
 E: 1850 MAY 14
 L: 1860 MARCH 20
 BLACK
 E: 1860 AUGUST 13
 L: 1886 MARCH 9

APRIL 14, 1851

PREPAID
SINGLE RATE

OVER 300 MILES

PAID

PAID
 16x4MM
 RED/ORANGE//BRICK
 E: 1845 FEBRUARY 15
 L: 1848 AUGUST 28
 BROWN
 E: 1848 OCTOBER 10
 L:
 BLUE
 E: 1851 FEBRUARY 19
 L: 1851 JUNE 2



PAID
3

WORWICH TOWN
FEB
6
Ct.

Mrs Caleb Wright
Northampton
Mass.

NORWICHTOWN



7 BAR CORK
22x21MM
BLUE
E: 1852 APRIL 19
L: 1852 MAY 5



MAY 5, 1852



NORWICHTOWN Ct.
30MM CDS
RED/ORANGE/BRICK
E: 1841 JULY 13
L: 1850 APRIL 29
BLUE
E: 1850 MAY 14
L: 1860 MARCH 20
BLACK
E: 1860 AUGUST 13
L: 1886 MARCH 9

JUNE 16, 1852



6 BAR
18x19MM
BLUE
E: 1852 JUNE 16
L: 1852 DECEMBER 13



ACT OF MARCH 3, 1851
FROM AND AFTER JUNE 30, 1851
SINGLE LETTER RATE 1/2 OZ.
NOT EXCEEDING 3,000 MILES PREPAID -- 3 CENTS
IF NOT PREPAID ----- 5 CENTS



Miss Sarah P. Gulliver,



Philadelphia,

Or by Penn.

410

5 BAR - 1852

NORWICH TOWN

MOURNING COVER

7 BAR CORK
22X21MM
BLACK
E: 1852 A PRIL 19
L: 1852 JUNE 22



JUNE 22, 1852



THIS MOURNING ENVELOPE WAS SENT FROM PITTSFIELD, MS. TO NORWICH TOWN, CT. AS AN UNPAID LETTER WITH FIVE CENTS DUE. BUT THE NORWICH TOWN POSTMASTER SAW THAT A THREE CENT STAMP WAS STUCK ON THE ENVELOPE BACK. THE STAMP WAS CANCELED IN NORWICH TOWN.

ACT OF MARCH 3, 1851

FROM AND AFTER JUNE 30, 1851

SINGLE LETTER RATE 1/2 oz.	
NOT EXCEEDING 3,000 MILES PREPAID	-- 3 CENTS
IF NOT PREPAID	----- 5 CENTS
GREATER DISTANCES	----- 6 CENTS
DOUBLE LETTER	----- DOUBLE RATES
DROP LETTERS	----- 1 CENT

NORWICHTOWN

NORMAL SEMINARY



7 BAR
 18MM
 BLUE
 E: 1853 FEBRUARY 9~
 L: 1853 SEPTEMBER 13~



NORWICHTOWN Ct.
 30MM CDS
 RED/ORANGE/BRICK
 E: 1841 JULY 13
 L: 1850 APRIL 29
 BLUE
 E: 1850 MAY 14
 L: 1860 MARCH 20
 BLACK
 E: 1860 AUGUST 13
 L: 1886 MARCH 9

SEPTEMBER 13, 1853~

Normal Seminary, Norwich Town, Conn.
 Rev. T. D. P. STONE, Principal.

Two Terms of two sessions, of 11 weeks each, beginning 1st Wednesday in May and November.

TUITION.
 In the Teachers' Department, 50 cents per week, and 1 hour per day devoted to Seminary interests
 Classical Department, \$6.00 per session.
 High School, \$5.00 & 4.00 " "
 Children's Department, \$3.00 " "
 Board provided at . \$2.00 per week.

BOYS' FAMILY SCHOOL.
 (With no extras, unless sick.) \$5.00 per week, for board and tuition, including ancient and modern languages and stationery. Circulars sent, if requested.
 Bills payable in advance.

*Mrs. G. Davidson
 Norwich Town, Conn.*

NORWICHTOWN Ct. SEP 13

ACT OF MARCH 3, 1851
 FROM AND AFTER JUNE 30, 1851
 SINGLE LETTER RATE 1/2 oz.
 NOT EXCEEDING 3,000 MILES PREPAID -- 3 CENTS
 IF NOT PREPAID ----- 5 CENTS



Miss Abigail Palmer,
~~North Town,~~
East Haddam Conn.

NORWICHTOWN



ACT OF MARCH 3, 1851
 FROM AND AFTER JUNE 30, 1851
 SINGLE LETTER RATE 1/2 oz.
 NOT EXCEEDING 3,000 MILES PREPAID -- 3 CENTS
 IF NOT PREPAID ----- 5 CENTS

NORWICHTOWN Ct.
 30MM CDS
 RED/ORANGE/BRICK
 E: 1841 JULY 13
 L: 1850 APRIL 29
 BLUE
 E: 1850 MAY 14
 L: 1860 MARCH 20
 BLACK
 E: 1860 AUGUST 13
 L: 1886 MARCH 9

FEBRUARY 11, 1854



NOVEMBER 9, 1857



ACT OF MARCH 3, 1855
 EFFECTIVE APRIL 1, 1855
 COMPULSORY PREPAYMENT
 SINGLE LETTER RATE 1/2 oz.
 3,000 MILES PREPAID ----- 3 CENTS
 OVER 3,000 MILES ----- 10 CENTS
 DOUBLE LETTERS --- DOUBLE RATE
 SHIP FEE ADD ----- 2 CENTS

NORWICHTOWN

FEBRUARY 23, 1856

SCOTT # 11



NORWICHTOWN Ct.

30MM CDS

RED/ORANGE/BROWN

E: 1841 JULY 13

L: 1850 APRIL 29

BLUE

E: 1850 MAY 14

L: 1860 MARCH 21

BLACK

E: 1860 AUGUST 13

L: 1886 MARCH 9



Act of March 3, 1855

Effective April 1, 1855

Compulsory Prepayment

Single Letter Rate 1/2 oz.

3,000 miles prepaid ----- 3 Cents

Over 3,000 miles ----- 10 Cents

Double letters ----- Double rates

Ship Fee add ----- 2 Cents

APRIL 20, 1857

SCOTT # U10





Jas. W. Townsend Esq.
New Haven
Conn.



9443.
Mrs. Lucius C. Tanton.
Brimfield,
Mass.

NORWICHTOWN

NORWICHTOWN Ct.
 30MM CDS
 RED/ORANGE/BRICK
 E: 1841 JULY 13
 L: 1850 APRIL 29
 BLUE
 E: 1850 MAY 14
 L: 1860 MARCH 20
 BLACK
 E: 1860 AUGUST 13
 L: 1886 MARCH 9



MARCH 20, 1860



ACT OF MARCH 3, 1855
 EFFECTIVE APRIL 1, 1855
 COMPULSORY PREPAYMENT
 SINGLE LETTER RATE 1/2 OZ.
 3,000 MILES PREPAID ----- 3 CENTS
 OVER 3,000 MILES ----- 10 CENTS
 DOUBLE LETTERS --- DOUBLE RATE
 SHIP FEE ADD ----- 2 CENTS



Mr. S. W. Williams

New Sweden



L. F. J. Korte

Miss Juliette F. Hyde

Norwich Town

Conn

NORWICHTOWN

LAFAYETTE SABIN FORSTER

Free
L. F. Forster



JULY 11, 1856



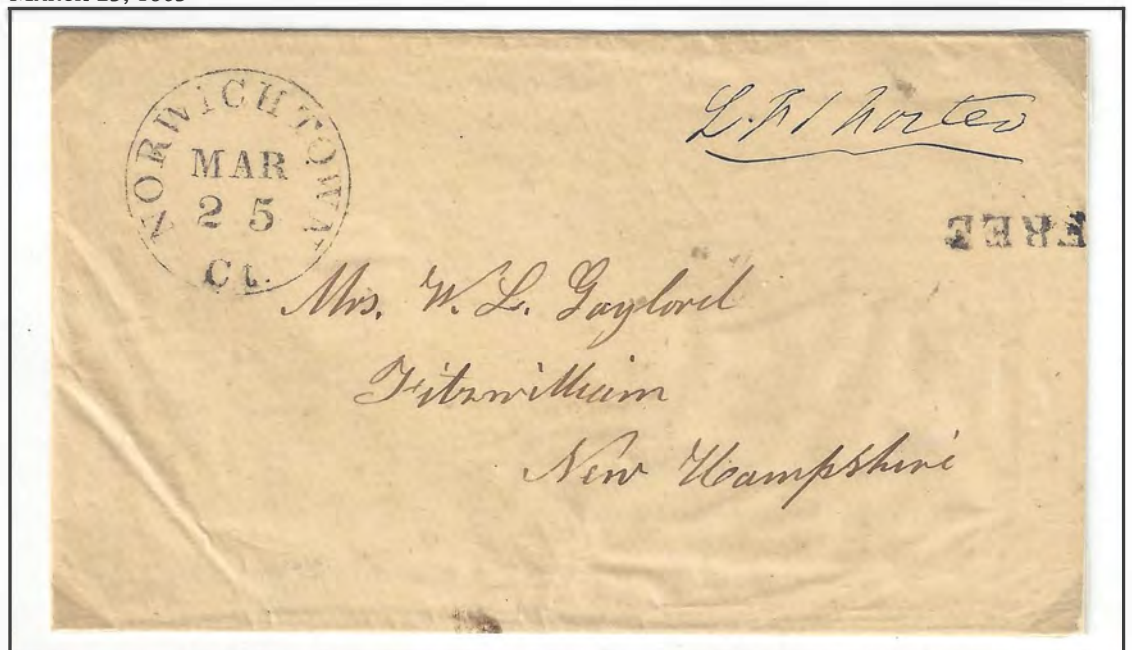
NORWICHTOWN Ct.
30MM CDS
RED/ORANGE/BRICK
E: 1841 JULY 13
L: 1850 APRIL 29
BLUE
E: 1850 MAY 14
L: 1860 MARCH 20
BLACK
E: 1860 AUGUST 13
L: 1886 MARCH 9

L. F. Forster

MARCH 25, 1865

FREE

FREE
18x4MM
RED/ORANGE/BRICK
E: 1841 JULY 13
L: 1846 MARCH 17
BLACK
E: 1864 SEPTEMBER 14
L: 1865 APRIL 13

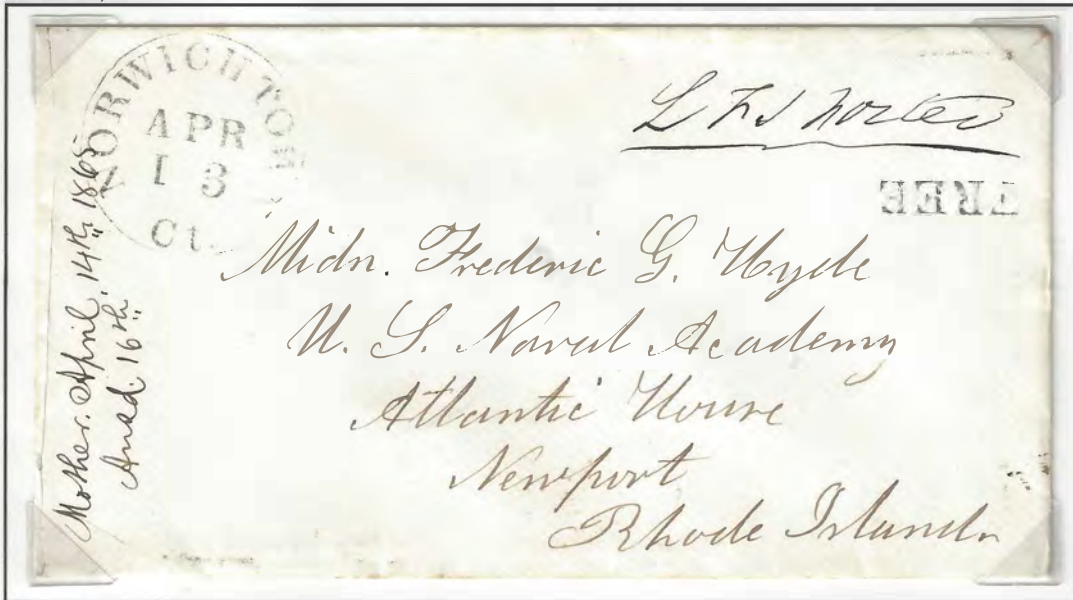


NORWICHTOWN

LAFAYETTE SABIN FORSTER
COURTESY FREE FRANK
UNITED STATES NAVAL ACADEMY
NEWPORT, RHODE ISLAND
ANNAPOLIS, MARYLAND

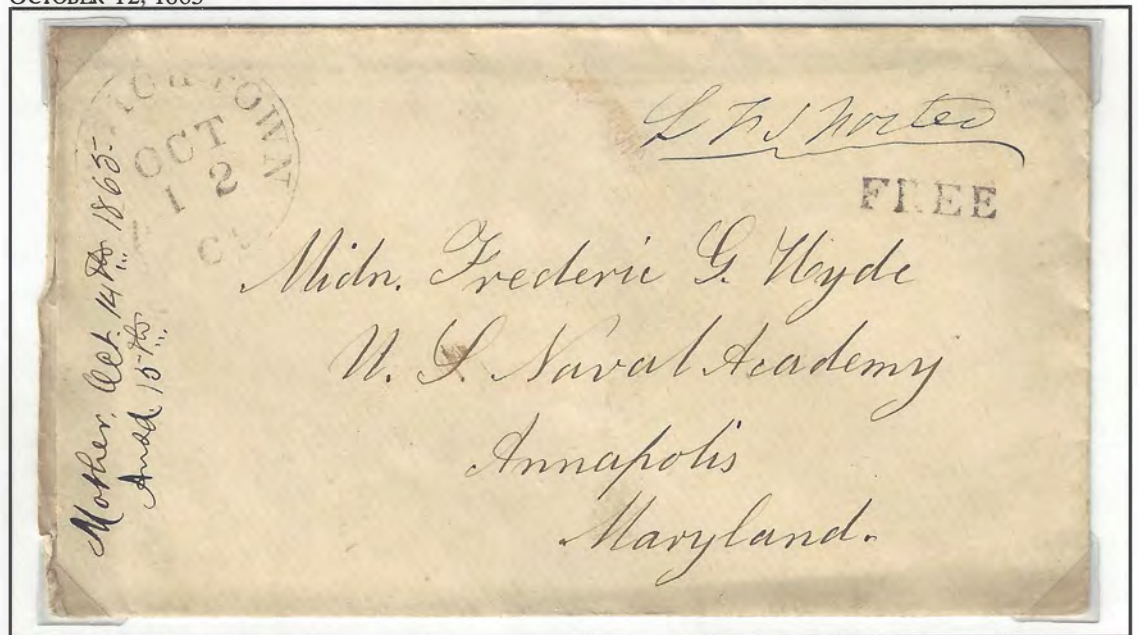
L. F. Forster

APRIL 13, 1865



NORWICHTOWN Ct.
30MM CDS
RED/ORANGE/BRICK
E: 1841 JULY 13
L: 1850 APRIL 29
BLUE
E: 1850 MAY 14
L: 1860 MARCH 20
BLACK
E: 1860 AUGUST 13
L: 1886 MARCH 9

OCTOBER 12, 1865



FREE

FREE
18x4MM
RED/ORANGE/BRICK *
E: 1841 JULY 13
L: 1846 MARCH 17
BLACK
E: 1864 SEPTEMBER 14
L: 1865 NOVEMBER 6

NEW LONDON COUNTY

POST OFFICES and POSTMASTER

NORWICH TOWN

//

AUGUST 7, 1862



NORWICH TOWN
 30MM CDS
 RED/ORANGE/BRICK
 E: 1841 JULY 13
 L: 1850 APRIL 29
 BLUE
 E: 1850 MAY 14
 L: 1860 MARCH 20
 BLACK
 E: 1860 AUGUST 13
 L: 1886 MARCH 9

Act of March 3, 1855
 Effective April 1, 1855
 Compulsory Prepayment
 Single Letter Rate 1/2 oz.
 3,000 miles prepaid ----- 3 C
 Over 3,000 miles ----- 10 C
 Double letters ----- Double

NORWICH TOWN

MISSENT & FORWARDED



4 WEDGE
~19MM
BLACK
E: 1864 NOVEMBER 28
L:



NORWICH TOWN Ct.
30MM CDS
RED/ORANGE/BRICK
E: 1841 JULY 13
L: 1850 APRIL 29
BLUE
E: 1850 MAY 14
L: 1860 MARCH 20
BLACK
E: 1860 AUGUST 13
L: 1886 MARCH 9

NOVEMBER 28, 1864

SCOTT # 65



LETTER MAILED FROM NORWICH TO NEW HAVEN, BUT THE RECIPIENT HAD MOVED TO STONINGTON. A THREE CENT STAMP WAS ADDED AND CANCELED IN NEW HAVEN AND FORWARDED TO STONINGTON.

A CT OF MARCH 3, 1863
EFFECTIVE JUNE 30, 1863
COMPULSORY PREPAYMENT
SINGLE LETTER RATE 1/2 OZ.
ANY DISTANCE ----- 3 CENTS
DROP LETTERS ----- 2 CENTS
PRINTED MATTER, 3 CIRCULARS 2 CENTS
PRIVATE SHIP LETTERS --- DOUBLE LETTER RATES

NORWICHTOWN

SNOWFLAKE
19MM
BLACK
E: 1864 MARCH 22
L: 1864 MAY 5



MARCH 22, 1864

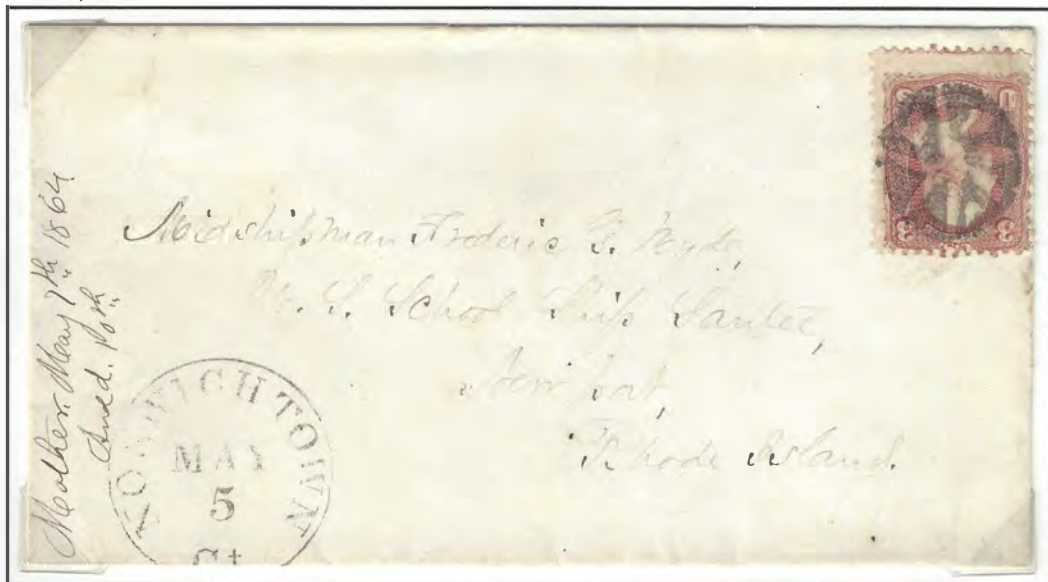


ALSO POSTMARKED MARCH 23, NORWICHTOWN Ct.



NORWICHTOWN Ct.
30MM CDS
RED/ORANGE/BRICK
E: 1841 JULY 13
L: 1850 APRIL 29
BLUE
E: 1850 MAY 14
L: 1860 MARCH 20
BLACK
E: 1860 AUGUST 13
L: 1886 MARCH 9

MAY 5, 1864



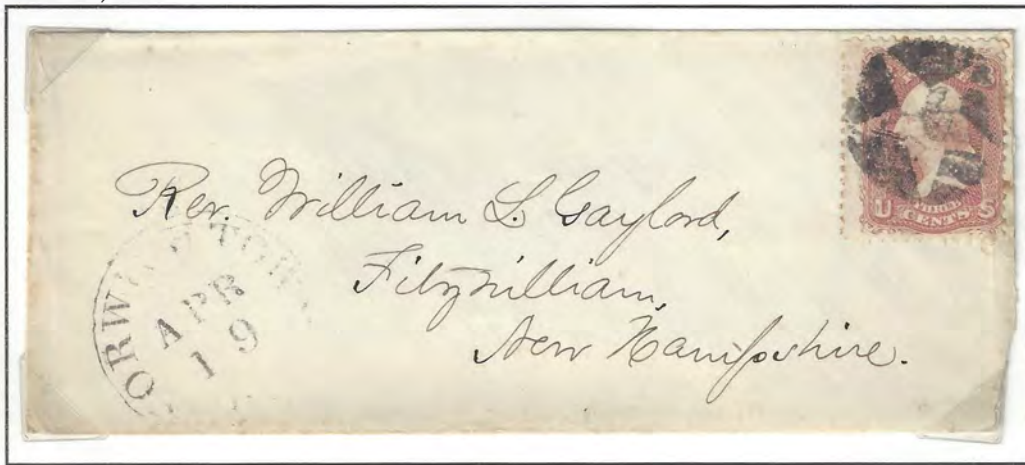
SENT TO NAVAL ACADEMY SCHOOL SHIP 'SANTEE'

NORWICHTOWN

NORWICHTOWN Ct.
 30MM CDS
 RED/ORANGE/BRICK
 E: 1841 JULY 13
 L: 1850 APRIL 29
 BLUE
 E: 1850 MAY 14
 L: 1860 MARCH 20
 BLACK
 E: 1860 AUGUST 13
 L: 1886 MARCH 9



APRIL 19, 1867



STAR NEGATIVE
 23MM
 BLACK
 E: 1867 APRIL 13
 L: 1867 APRIL 19

JULY 26, 1867



X
 21MM
 BLACK
 E: 1867 JULY 26
 L: 1867



NORWICHTOWN

NORWICHTOWN C:
 30MM CDS
 RED/ORANGE/BRICK
 E: 1841 JULY 13
 L: 1850 APRIL 29
 BLUE
 E: 1850 MAY 14
 L: 1860 MARCH 20
 BLACK
 E: 1860 AUGUST 13
 L: 1886 MARCH 9



FOREIGN MAIL

PANAMA

JUNE 30, 1868

SCOTT # 68



AUGUST 14, 1868

SCOTT # 76 x 2



COVERS ADDRESSED TO FREDERIC G. HYDE STATIONED ABOARD THE U.S.S. DACOTAH/ SOUTH PACIFIC SQUADRON/ CARE OF UNITED STATES CONSUL/ PANAMA/ NEW GRENADA. BOTH ARE DOCKETED AS BEING RECEIVED IN VALPARAISO, CHILE.

NORWICHTOWN

FOREIGN MAIL

ENGLAND



NORWICHTOWN Ct.
 30MM CDS
 RED/ORANGE/BRICK
 E: 1841 JULY 13
 L: 1850 APRIL 29
 BLUE
 E: 1850 MAY 14
 L: 1860 MARCH 20
 BLACK
 E: 1860 AUGUST 13
 L: 1886 MARCH 9

JULY 29, 1873

SCOTT # 148



NORWICHTOWN



6 BAR CORK
17x18MM
BLACK
E: 1874 JANUARY 20
L: 1886 MAY 9



NORWICHTOWN Ct.
30MM CDS
RED/ORANGE/BRICK
E: 1841 JULY 13
L: 1850 APRIL 29
BLUE
E: 1850 MAY 14
L: 1860 MARCH 20
BLACK
E: 1860 AUGUST 13
L: 1886 MARCH 9

JUNE 25, 1874>

SCOTT # 156



Miss M. C. Trattles.

JANUARY 14, 1880>

SCOTT # 183



*Charles Jewett
Grandview
Tenn.*

JANUARY 20, 1874>

SCOTT # 158



*Mrs Horace Winslow
Williamette
Conn*

20 RI
MAR
13
CL



2 2
Mr. E. G. Loomis
28 State St

Boston
Mass

NORWICHTOWN



6 BAR CORK
17x18MM
BLACK
E: 1874 JANUARY 20
L: 1886 MAY 9



JANUARY 26, 1886

SINGLE

SCOTT # 210



NORWICHTOWN Ct.
30MM CDS
RED/ORANGE/BRICK
E: 1841 JULY 13
L: 1850 APRIL 29
BLUE
E: 1850 MAY 14
L: 1860 MARCH 20
BLACK
E: 1860 AUGUST 13
L: 1886 MARCH 9

APRIL 7, 1885

DOUBLE

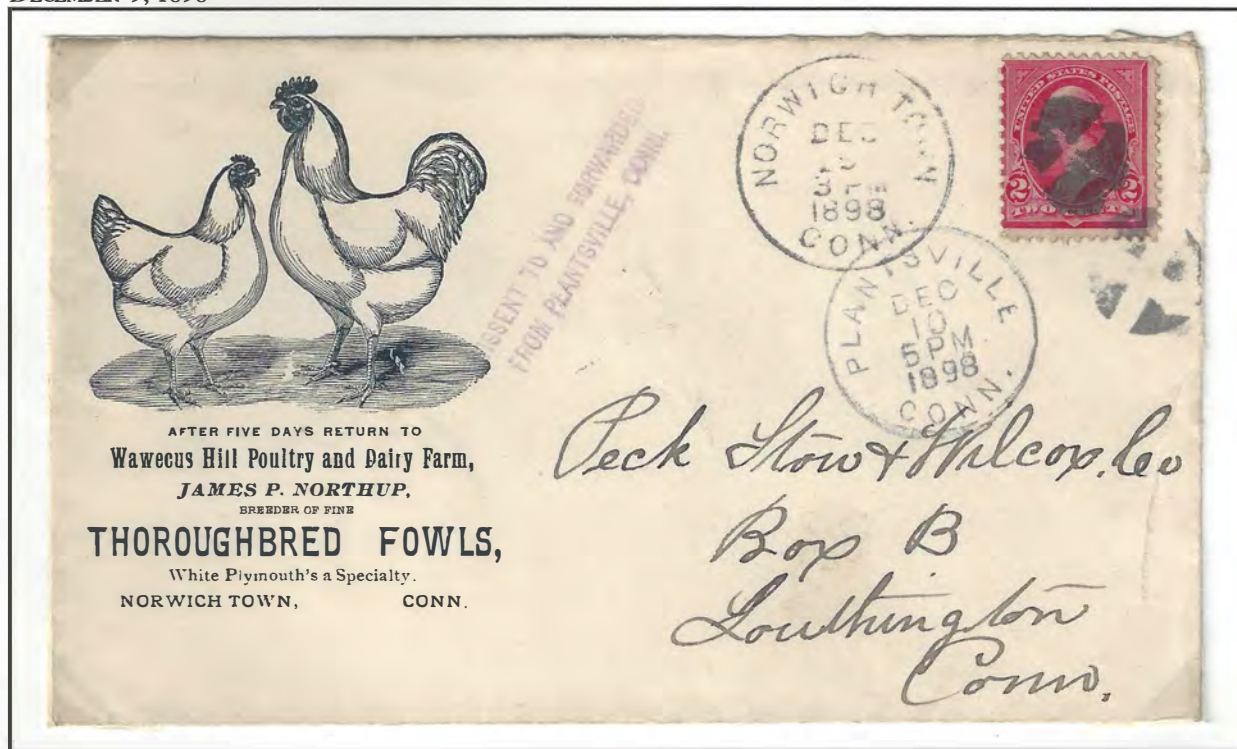
SCOTT # 210



NORWICHTOWN

**WAWECUS HILL POULTRY
AND
DAIRY FARM
JAMES P. NORTHUP**

DECEMBER 9, 1898



NORWICH TOWN CONN.
27.5MM CDS M/D/T/Y
BLACK
E: 1898 DECEMBER 9
L: 18

NORFOLK TOWN
AUG
16
10AM
1898
CONN.



E. J. Dennis Esq
28 State St
Boston
Mass.