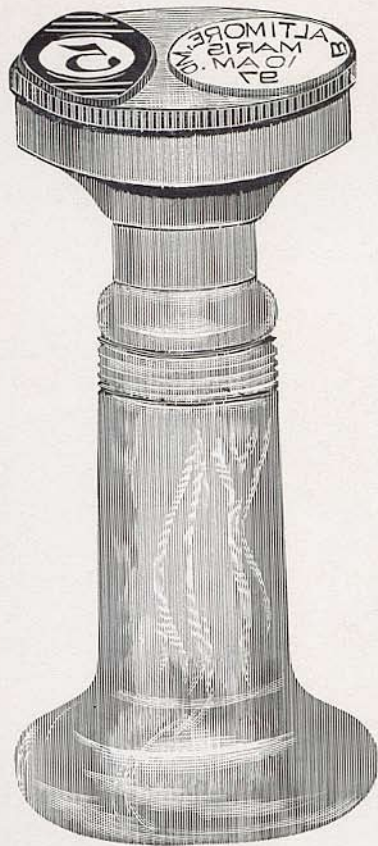


Steel Postmarking and Canceling Stamps



— Manufactured By —

Henry B. Chambers & Bros.,

LODGE, VIRGINIA, U. S. A.

The Steel Hand Stamps shown in this folder are only a few of the styles we manufacture; they are the regulation Postmarking and Canceling Stamps used in all Post Offices of the United States and possessions.

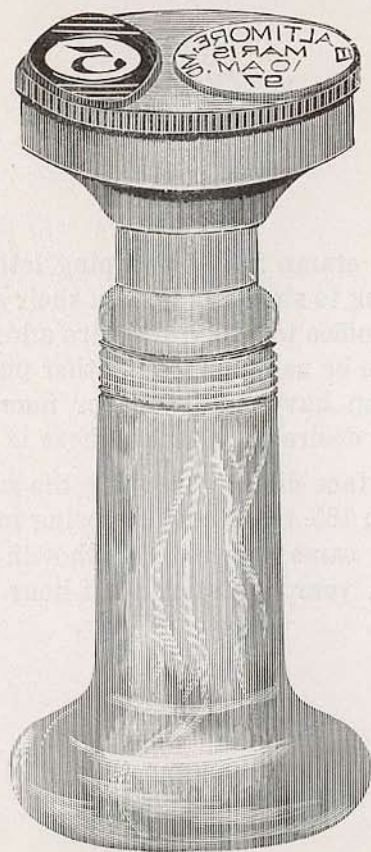
We make Steel Postmarking and Canceling Stamps to conform to the regulations and fill the requirements of all foreign countries and will quote prices from drawings or samples upon application.

We also make a specialty of Steel type and dies for canceling machines and solicit correspondence from the manufacturers of same.

The material from which our product is made is the best obtainable for the purpose, all parts are hardened and tempered so as to stand hard usage, and the engraving and finish is as perfect as skilled engravers and mechanics can make it.

This is a combined marking and canceling stamp of steel of the best material and workmanship. The face die is removable with the hand by unscrewing from the handle. The dates are inserted from the under side of the die, being provided with shoulders to prevent their passing through the die.

This stamp is provided with steel type for months, days, years, hours and half-hours, so as to represent the time of mailing throughout the 24 hours and half-hours of the day and night.



Price Complete, \$.....

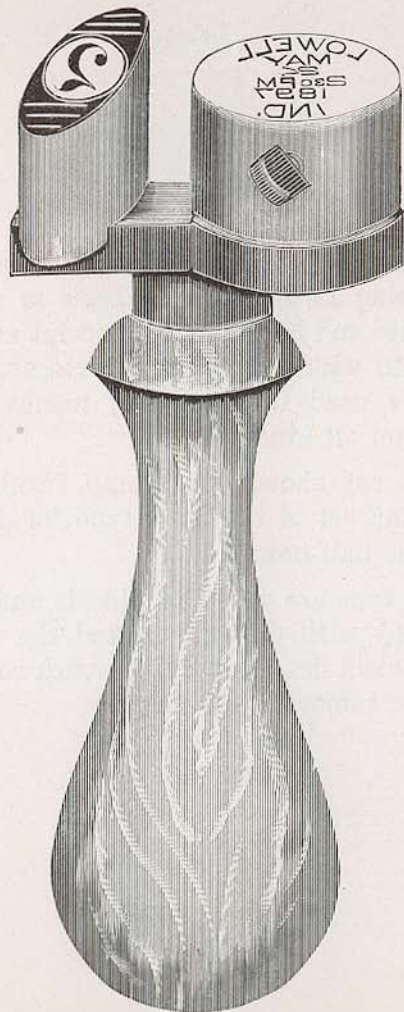
This is a combined Postmarking and Canceling Stamp and can be furnished with type for day, month and year only or hour and half-hour if desired.

It has a solid die with Steel Canceler as shown in cut. The steel type for dates are set in a mortice in the center of the die confined by set screw. The type are packed in a neat tin box with socket key for removing set screw, and the whole securely packed for shipment.

Price complete with month, day and 3 year type. \$.....

Price complete with month, day, hour and 3 year type. \$.....

Price complete with month, day, hour, half-hour and 3 year type. \$.....

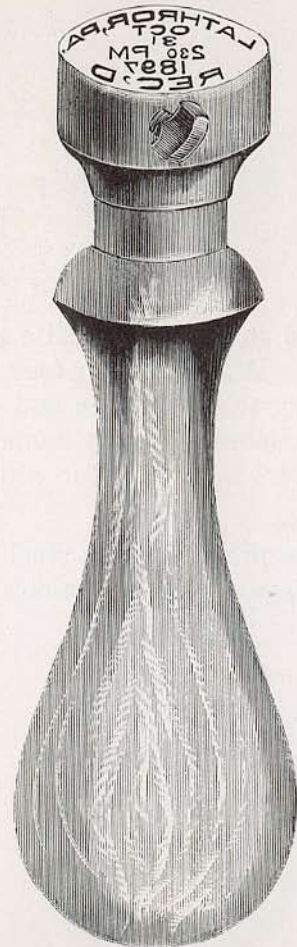


ITEM 166 A

Item 166 A is a receiving Stamp for Stamping Letters on the back to show the date and hour of their receipt at the office to which they are addressed, but can be used for stamping names and dates on all kinds of papers.

The cut shows the stamp furnished with full set of the Steel type for dates and the half-hours.

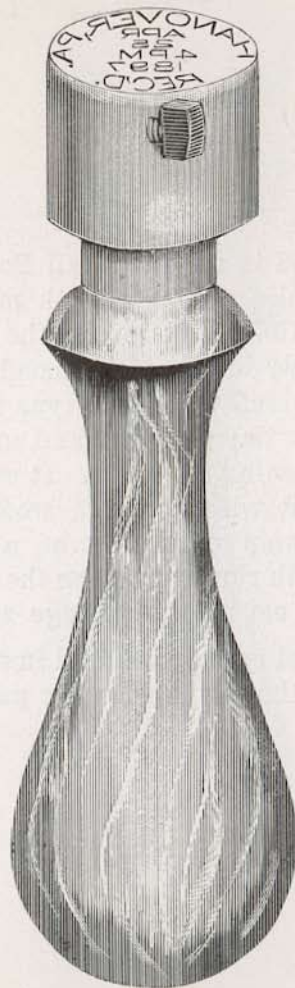
The type are set in a solid die and are confined with set screws and the type are packed in a neat tin box with socket key for removing set screw.



Price Complete, \$

Item 168 shown on opposite page can be used for stamping all paper where it is necessary to show name and date. It will be furnished with any name or number of letters as figures for which there is space.

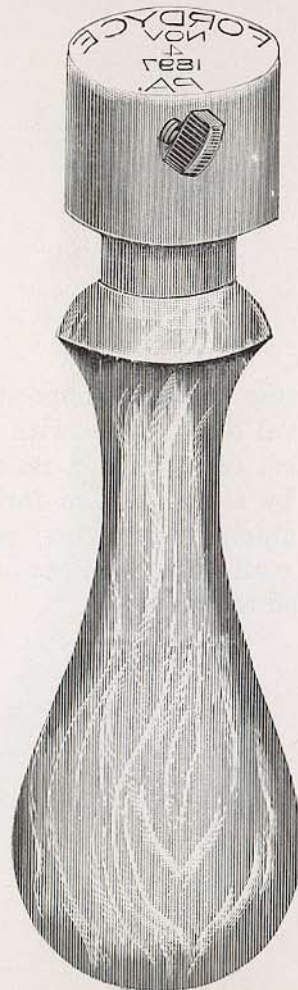
It can be provided with steel type for months, days, years and hours only or half-hours.



Price Complete, \$.....

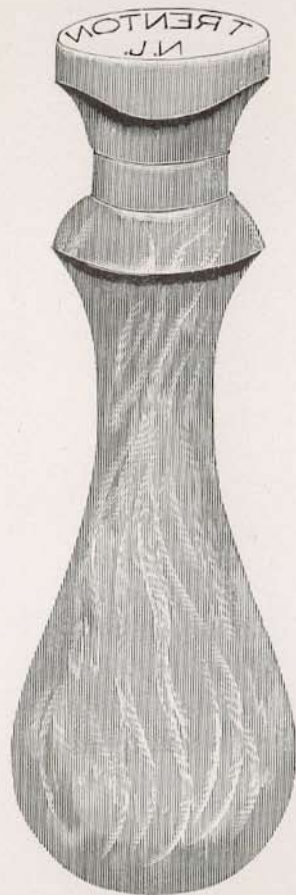
Item 169 is for the small Post Office. It is a solid steel die, with mortice in center of the face to receive the type and a set screw in its side to confine them. It is provided with steel type for dates for month, day and year and socket key for unscrewing set screw. It will be accompanied with separate wooden canceling stamp consisting of a wooden handle with rings turned on the end with which to cancel the postage stamp.

The steel type are packed in a neat tin box and the whole securely packed for shipment.



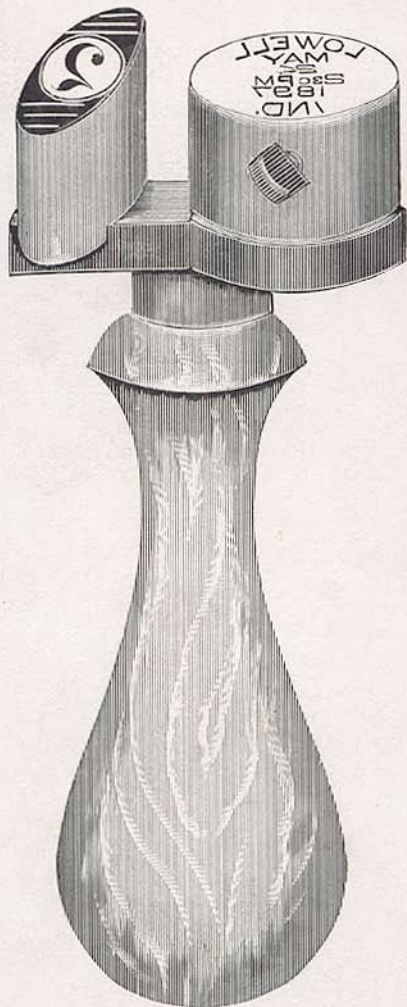
Price Complete, \$

The stamp shown on opposite page is a solid oval die of steel, with the name of the post office cut on its face, surrounded by a rim oval in form, and is used to stamp newspapers, periodicals and such mail matter as does not require to be dated and canceled.



Price Complete, \$.....

Steel Postmarking and Canceling Stamps



Manufact'ed by HENRY B. CHAMBERS & BROS., LODGE, VA., U.S.A.