

MINNESOTA



WASIOJA Cover above bears the Type II postmark bearing the FREE frank of the postmaster R. Campbell. Cover below bears the same postmark on a registered cover. Prepaid with the 3¢, 5¢ and 10¢ stamps of the 1861 issue.



MINNESOTA



CLAREMONT. Post Office established in Dodge County January 24, 1856. Cover below bears the postmark of F.W. Doe the postmaster. The return address is to George Hitchcock the first postmaster of Claremont.



MINNESOTA



FARM HILL. Post Office established in Olmsted County April 13, 1863 and discontinued December 20, 1889. Cover above bears the county postmark. Both covers used in the 1870 period.

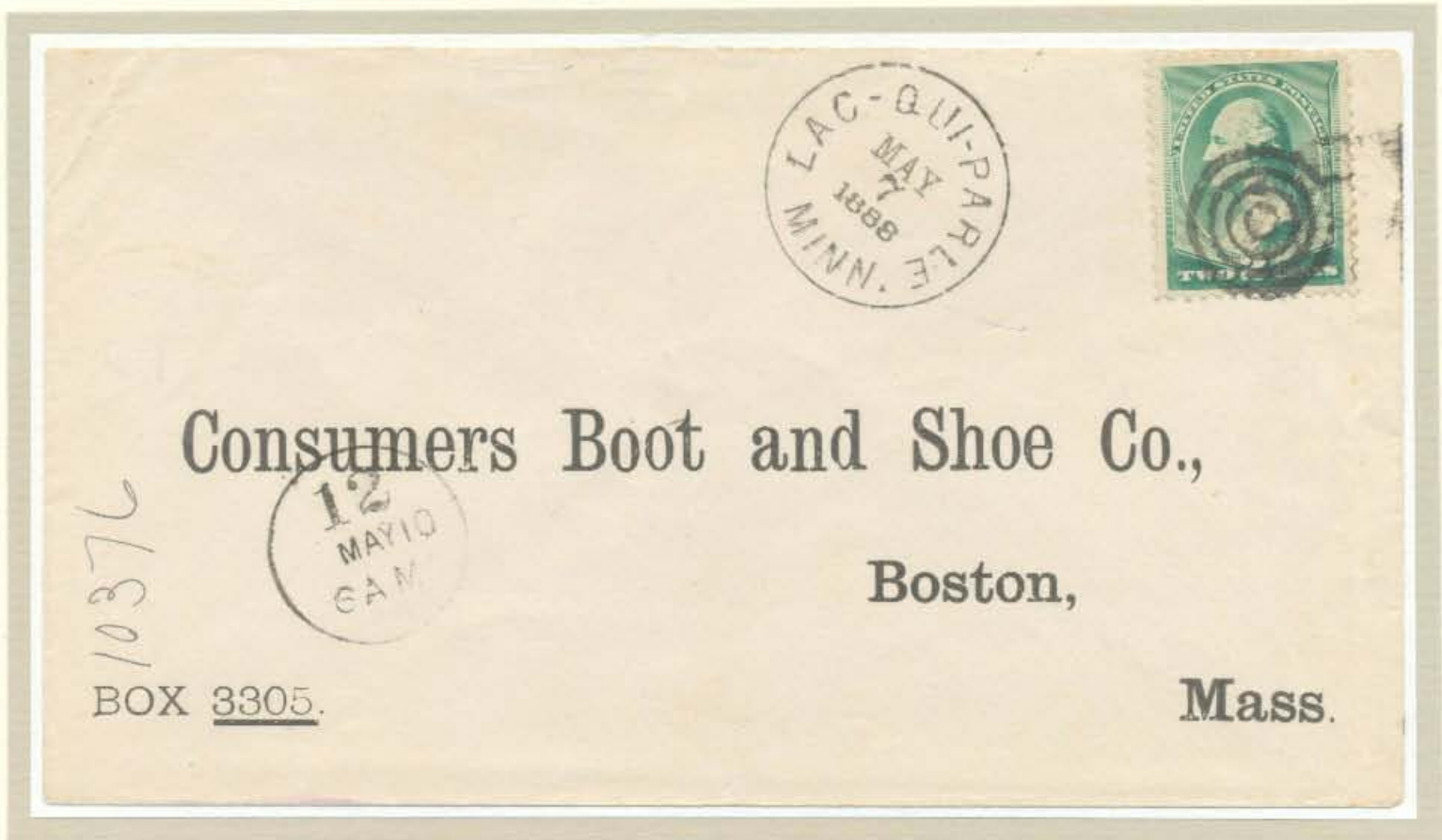


MINNESOTA



NASHVILLE CENTRE. Post Office established in Martin County February 21, 1867 and name changed to NASHVILLE CENTER January 21, 1892. It WAS DISCONTINUED July 15, 1904. Cover shown bears the postmark of S. BACON the postmaster.

LAC QUI PARLE. Post Office established in Dahkotchah County one of the original counties February 21, 1851 and discontinued in that county August 14, 1854. Reestablished in Lac qui Parle County December 15, 1870 and finally discontinued August 31, 1907.





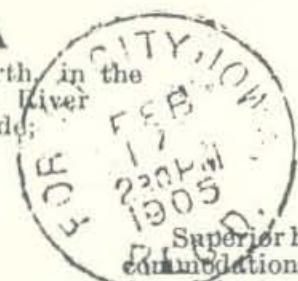
GRAND FORKS, NORTH DAKOTA

Is situated on the western shore of the Red River of the North, in the most fertile agricultural districts in the world; the Red River Valley, a valley 300 miles in length and 60 miles wide; the county seat of Grand Forks County, a county without a dollar of bonded debt.

A thorough public school system, two business colleges, the Grand Forks College, St. Bernard's Academy and the State University of North Dakota with 500 students, and buildings valued at a quarter of a million dollars. Educational facilities unequalled by any city in the northwest.

Has over 10,000 inhabitants, 17 miles of sewer, 17 miles of water mains and 12 miles of paved streets. Owns its own electric light plant, water works and an excellent filtration plant, costing \$60,000. 3 wholesale grocery and 3 wholesale fruit houses. Has two daily, four weekly and two monthly papers. Woolen Mills, saw mills, 4 brick yards, foundries, biscuit and cracker factories, tent and awning factory, candy factories, bottling works, trunk factory, tile factory, sash and door factory and is an excellent point for distribution of farm implements and manufactured products, 20 passenger trains in and out daily. Has an electric street railway in operation. 4 steam laundries.

Write the Commercial Club for Detailed Information.



Superior hotel accommodations; finest opera house in the northwest, costing \$100,000; public library, costing \$25,000; foundation completed for a \$165,000 public building; public and private improvements to cost \$500,000 under contract for completion during the next year.

MINNESOTA



IN THE DAYS OF DAN PATCH

The Minnesota State Fair as it looked in 1902-1906 when Dan Patch was making his world records of 1:56 and 1:55 for the mile.



MINNESOTA



FARIBAULT MINNESOTA to England via Liverpool/U.S.Packet with arrival date April 21, 1879 - 13 days in transit.

MENDOTA MINNESOTA. Post Office established January 7, 1854 and discontinued March 3, 1972, in Dakota County. Another example of international mail to Great Britain in 1878.



MINNESOTA



RED LAKE FALLS. Post Office established in Polk County March 25, 1878 and changed to Red Lake County December 24, 1896.

RED WING. Post Office established as WAH-COO-TA in Wabasha County August 6, 1850 and name changed to Red Wing October 7, 1850. On March 5, 1853 it became the county seat of Goodhue County.



MINNESOTA



DUNDAS. Post Office established in Rice County February 22, 1859. Cover above bears the county postmark April 1, 1880.

HAMMOND. Post Office established as HAMMONDSFORD September 16, 1878 and name changed to **HAMMOND** and discontinued March 31, 1965. Cover below bears the county postmark July 30, 1884.



MINNESOTA



SAUK RAPIDS. Cover shown above bears the mail carriers handstamp of C.B. CHRYSLER SAUK RAPIDS/ROUTE AGENT used in the 1870 period.
HECTOR. Post Office established September 9, 1875 in Renville County



MINNESOTA



WINNEBAGO AGENCY. Post Office established in Blue Earth County September 6, 1856 and discontinued March 12, 1886. Cover above was used in the 1860 period.

WINNEBAGO CITY. Post Office established in Faribault County February 3, 1857 and name changed to **WINNEBAGO** March 1, 1905.



Reservation Town

MINNESOTA



MURDOCK. Post Office established in Swift County December 23, 1878.
Cover bears the county postmark March 17, 1880.

MOORES PRAIRIE. Post Office established in Wright County June 18, 1862
and name changed to **COKATO.** January 15, 1878.



MINNESOTA



Miss. Augusta. Johnson
Harris,
Chisago Co. Minnesota,



July 23 -
My dear Miss Burns -

WHITE BEAR LAKE MINN JUL 30 1884. Post Office was established July 22, 1857 in Ramsey County. There are no territorial postmarks known. Discontinued May 31, 1938 to a branch of St. Paul.

WHITEBEAR LAKE, MINN JUL 25 1904 R.F.D. The spelling was changed to two words on December 1, 1895 and then changed back to three words again on December 1, 1905.



WHITEBEAR LAKE,
JUL 25 1904
MINN.

Miss J Burns.
Briar Cliff
Ossining
N.Y.

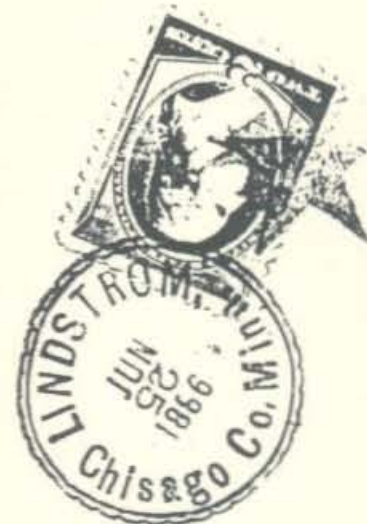
Box 116

MINNESOTA



SUNRISE CITY. Post Office established in Chisago County February 4, 1856 and changed to **SUNRISE** April 23, 1894. Discontinued November 30, 1954.

LINDSTROM. Post Office established in Chisago County November 16, 1880. Cover bears the county postmark June 25, 1886.



MINNESOTA



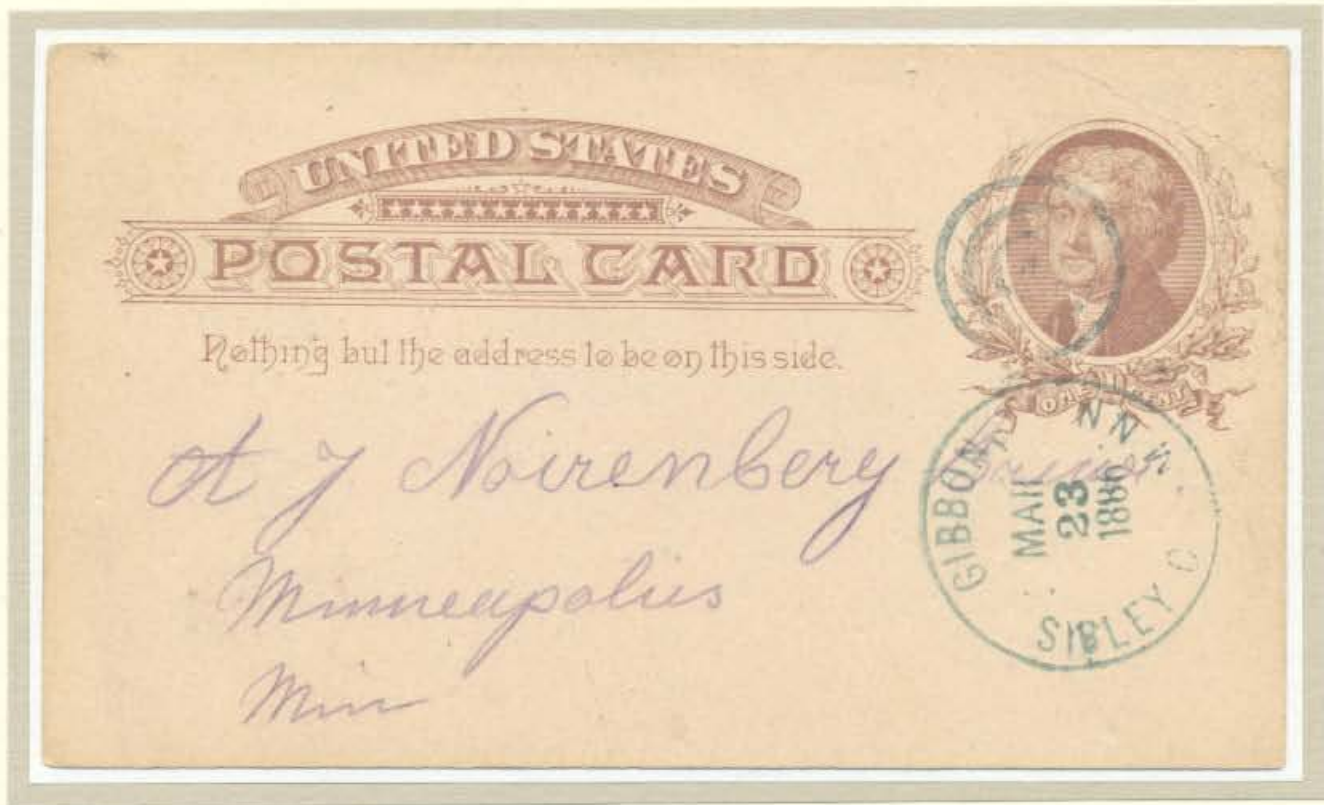
RURAL FREE DELIVERY.

PRIOR LAKE. Post Office established as PRIORS LAKE April 4, 1872 in Scott County. Name was changed to PRIOR LAKE in 1893 and then to PRIORLAKE from 1895 to 1905. Finally back to o PRIOR LAKE as it is today. Cover above used February 19 1904 during the 1895-1905 period.

MANKATO. Post Office established November 25 1853 in Blue Earth County. Cover used June 2, 1903.



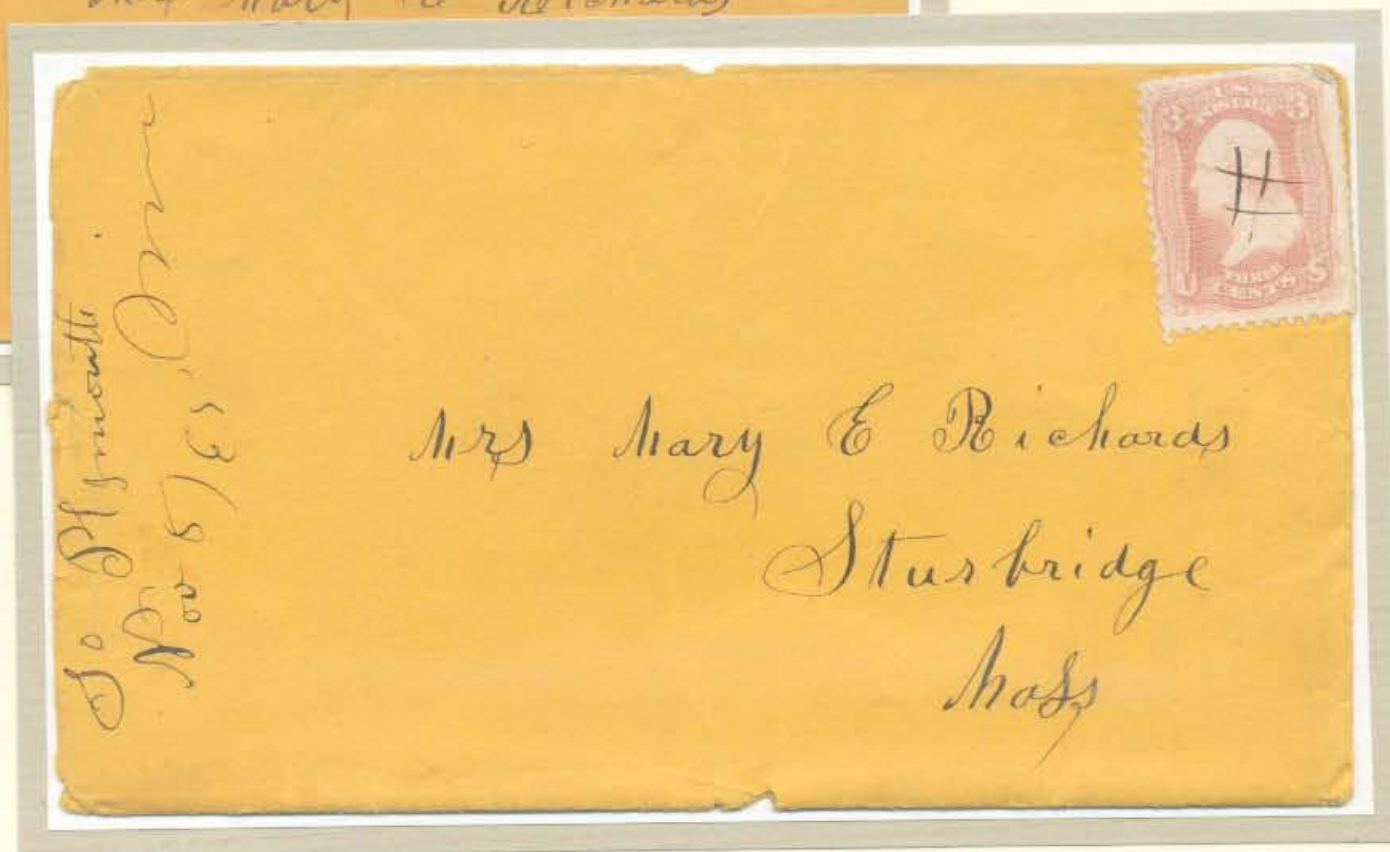
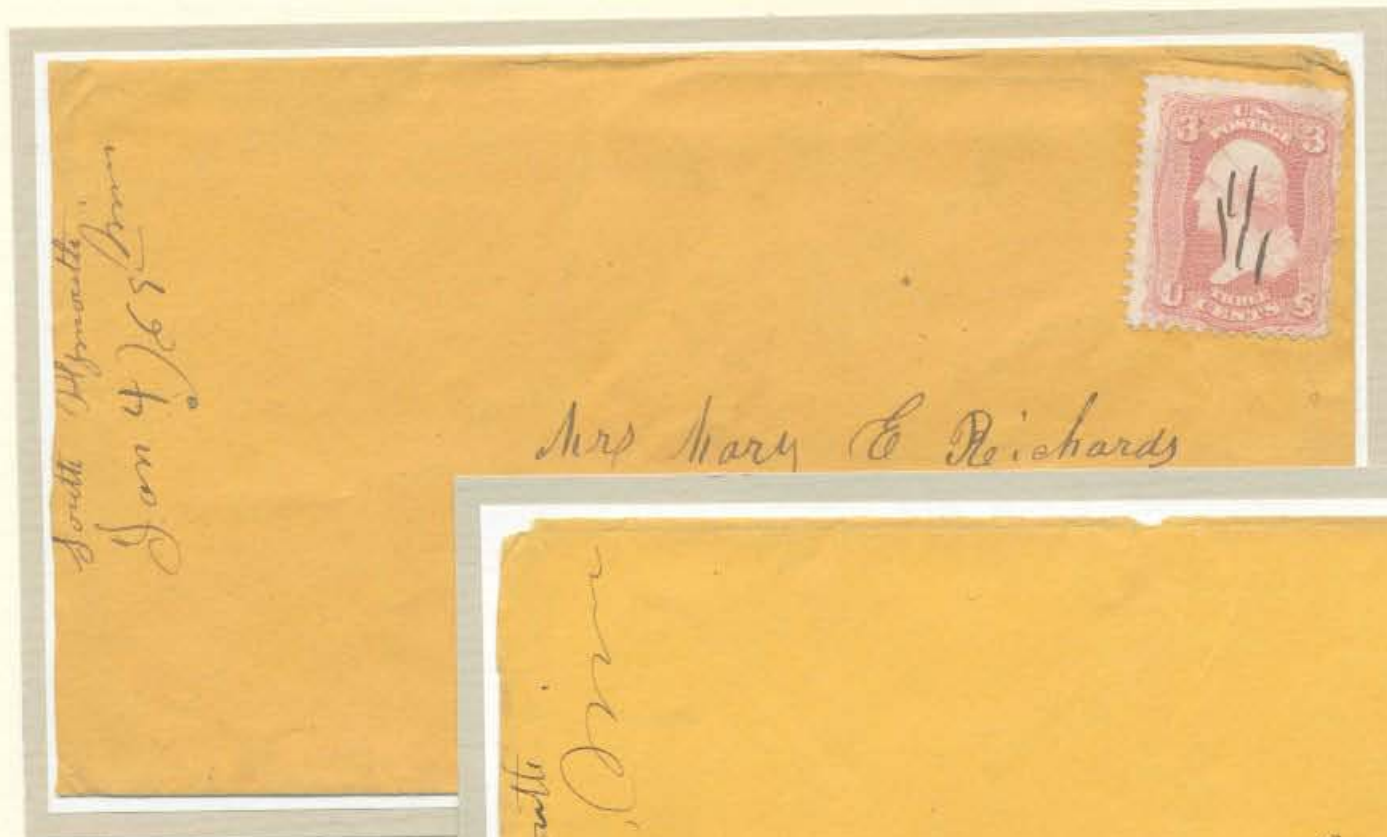
MINNESOTA



GIBBON. Post Office established in Sibley County March 15, 1883. Postal card bears the county postmark March 15, 1886.
STOCKTON. Post Office established in Winona County September 8, 1855. Cover bears the postmark of S.B. Sheardown, the local physician and surgeon, October 25, 1882.



MINNESOTA



SOUTH PLYMOUTH established January 11, 1864 in Hennepin County. Name changed to **WAYZATA** October 2, 1866. Covers above have the variation of the word south i.e. South Plymouth Minn Jan 4/65 and So Plymouth Minn Nov 5/65. Cover below used April 9th about 1875.



MINNESOTA



Forwarded by
John C. Lacerda,
Agent for the Norddeutscher
Lloyd, of Bremen, at
Vellas - S. Jorge - Açores.



FOREIGN MAIL. Cover above originated in Portugese ANGRA in the AZORES ISLANDS, addressed to Hutchinson, Minnesota June 9, 1902. Cover below originated in RUSSIA, September 18, 1902 and was recieved at NEW ULM January 7, 1903. It is a wrapper, which may have contained a newspaper of importance, because it is registered and addressed to the Chief of Police.



MINNESOTA

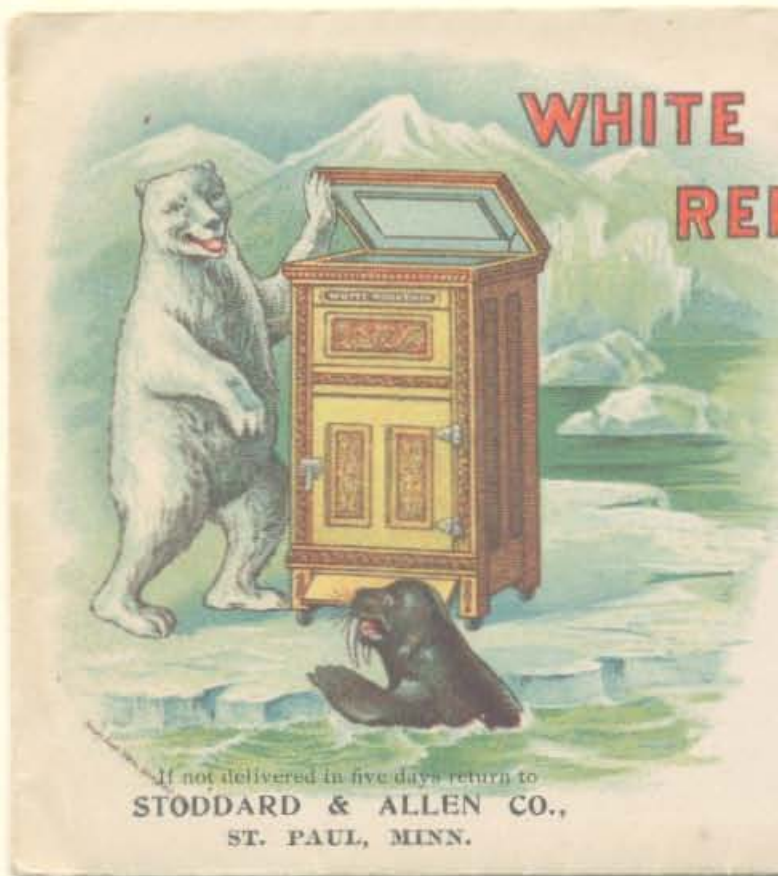


CROOKSTON. Post Office established as HAWLEY in Polk County September 9, 1872. The name was changed to **CROOKSTON** November 13, 1872. Cover above bears the county postmark May 29, 1882.

MAINE PRAIRIE. Post Office established in Stearns County March 13, 1863 and discontinued March 15, 1905. Postal card bears the county postmark January 30, 1882.



MINNESOTA



WHITE MOUNTAIN REFRIGERATORS.

PAUL, MINN. 1905

STODDARD & ALLEN CO.,
ST. PAUL, MINN.

*J. M. Sheehan
Lermond
Iowa*

ST PAUL MINN. MAR 1 1905

WHITE MOUNTAIN REFRIGERATORS

EASY TO KEEP CLEAN.
Use less ice. More convenient.
Constructed on Scientific Principles.

MADE BY
MAINE MANUFACTURING CO.
LARGEST FACTORY IN THE WORLD.
MONASHUA, NEW HAMPSHIRE, U.S.A.



MINNESOTA



*L. B. Deets
Iowa Trav. Mus Assn
Des Moines
Iowa*

CROOKSTON, MINN/DEC 20 1908.

Peters Loaded Shells
the World's Best

PETERS CARTRIDGES
USED BY
WINNER OF THE
INDOOR CHAMPIONSHIP
OF THE UNITED STATES
NINE SUCCESSIVE YEARS
UNEQUALED FOR
ACCURACY CLEANLINESS
AND UNIFORMITY

PETERS SHELLS
LOADED WITH
BLACK
SEMI-SMOKELESS
AND ALL THE
STANDARD
SMOKELESS
POWDERS

**TO INSURE
SATISFACTION
ALWAYS ASK FOR
PETERS SHELLS AND CARTRIDGES**

MINNESOTA



TORAH. Post Office established in Stearns County July 24, 1856 and discontinued MAY 3, 1909. Cover above bears the County Postmark April 16, 1883.

LAKE BENTON. Post Office established April 14, 1873 in Lyon County and then to Lincoln County April 13, 1875.



MINNESOTA



ROCHESTER, OLMDSTED COUNTY, MINNESOTA. "CITY OF HOMES."

Beautiful Parks, Twelve Churches, Fine Public Library, New Metropolitan Theater, Sectarian and Private Schools, six Public Schools, finest in the state, Rochester Business and Normal College, Rochester Commercial Club.

Numerous
Manufactories:
GEO. J. STEVENS,
Wholesale Carpets and Dra-
peries; CONLEY CAMERA CO.,
Famous Rochester Cameras; JOHN A.
COLE FLOUR MILLS, Superior Spring
Wheat Flour; SCHUSTER BREWING CO.
Schuster's Malt Tonic; MINNESOTA
CONDENSING CO., M'f'g's. Con-
densed Milk; C. H. MORRILL
& SON, Wholesale Groceries
Etc.; W. J. EATON EGG
CO., Cold Storage.

Good
Hotels: Cook
House, Rochester
Hotel, Norton House,
and five other Hotels. Three
Founderies & Machine Shops,
two Daily and two Weekly Newspa-
pers. Rochester Water Works
Co., City Electric Light and
Power Plant, Rochester
Bottling Works and
Rochester Gas
Company.

County Seat of
the Best Single Agri-
cultural County in the United
States. On the CHICAGO & NORTH-
WESTERN and the CHICAGO GREAT WESTERN
Railroads. One hundred miles south of St. Paul and
Minneapolis. Three hundred and forty-five miles north-west
of Chicago. Population eight thousand. One hundred and two
Retail Stores, four Feed and Grist Mills, six Grain Elevators, Stock Yards.

ROCHESTER MERCHANTS' ASSOCIATION.

DR. WILLIAM J. MAYO
ROCHESTER, MINN.

Dr. Wm. Allen Pusey,
Chicago, Ill.

Dear Doctor:- At the present time I would not
advise further operation in the case
Young but if she should
that we might
I th-

DR. WILLIAM J. MAYO
ROCHESTER, MINN.



Dr. Wm. Allen Pusey,
65 Randolph St.
Chicago, Ill.

11/12

12

very truly yours,

W. Mayo

MINNESOTA



BEAVER. Post Office established in Winona County April 11, 1857 and discontinued January 1, 1906. Cover above may or may not be territorial as there is no year date to confirm it.

BEAVER FALLS. Post Office established in Renville County June 18, 1867 and discontinued June 15, 1904.



MINNESOTA



MINNESOTA



MINNEAPOLIS. Post Office established in Hennepin County January 7, 1854.

SAINT ANTHONYS FALLS. Post Office established in what was then St. Croix County, Wisconsin Territory October 1, 1849. On March 6, 1852 it became part of Hennepin County. Cover above bears the territorial postmark on the corner card of a local merchant.

MINNESOTA



WINONA. Post Office established as MONTEZUMA IN Wabasha County June 28, 1852 and the name changed to WINONA August 16, 1852. On February 23, 1854 it became part of Winona County. Cover above used February 4, 1862.

HEREFORD. Post Office established in Grant County as IRELAND May 25, 1881 and name changed to HEREFORD December 15, 1888. It was discontinued September 29, 1923. Cover shown was used August 26, 1889.



MINNESOTA



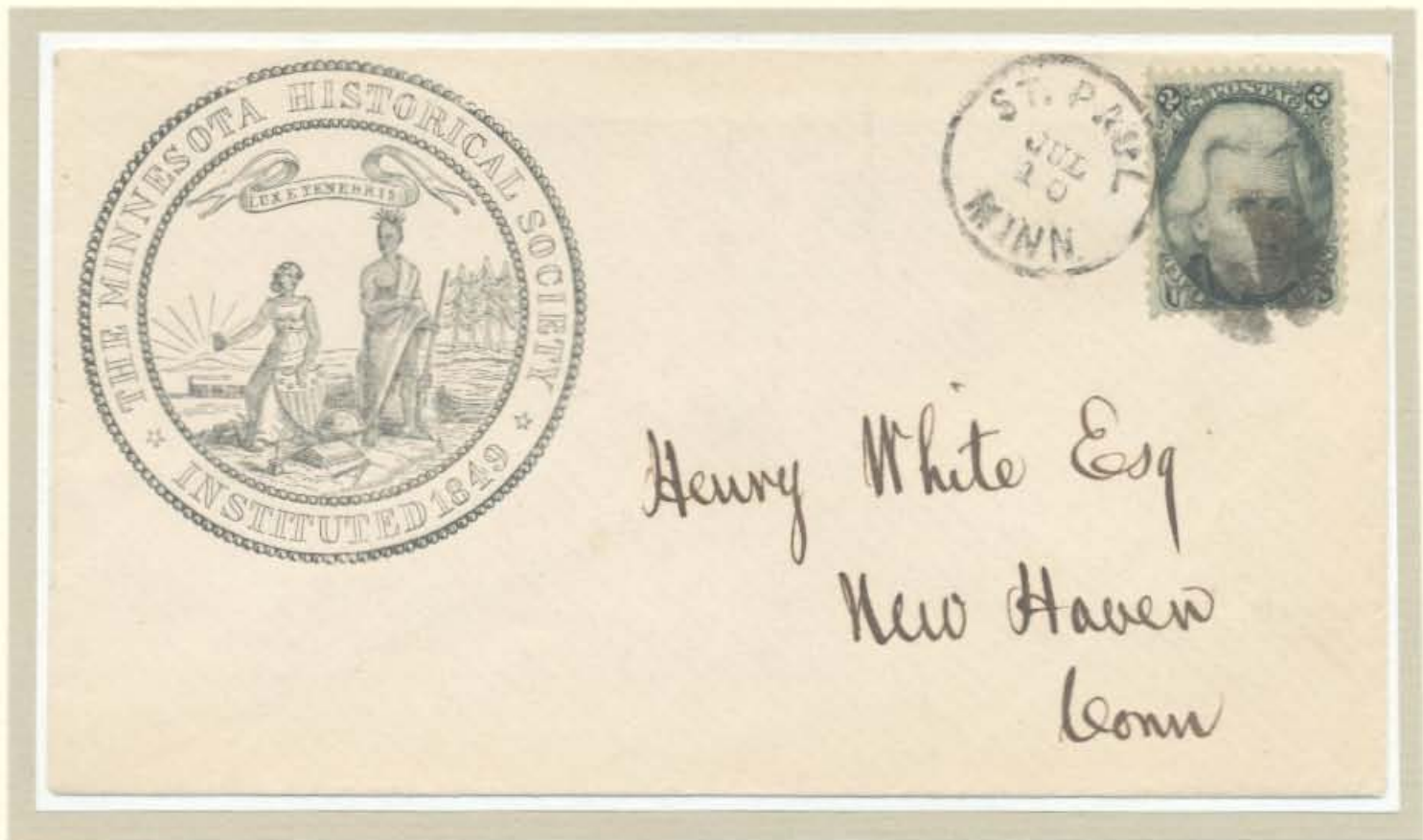
PEDDLER'S GROVE. Post Office was established in Waseca County on February 9, 1864 and discontinued February 10, 1870. Cover above was used January 29, 1866. Cover below December 25, 1867.



MINNESOTA



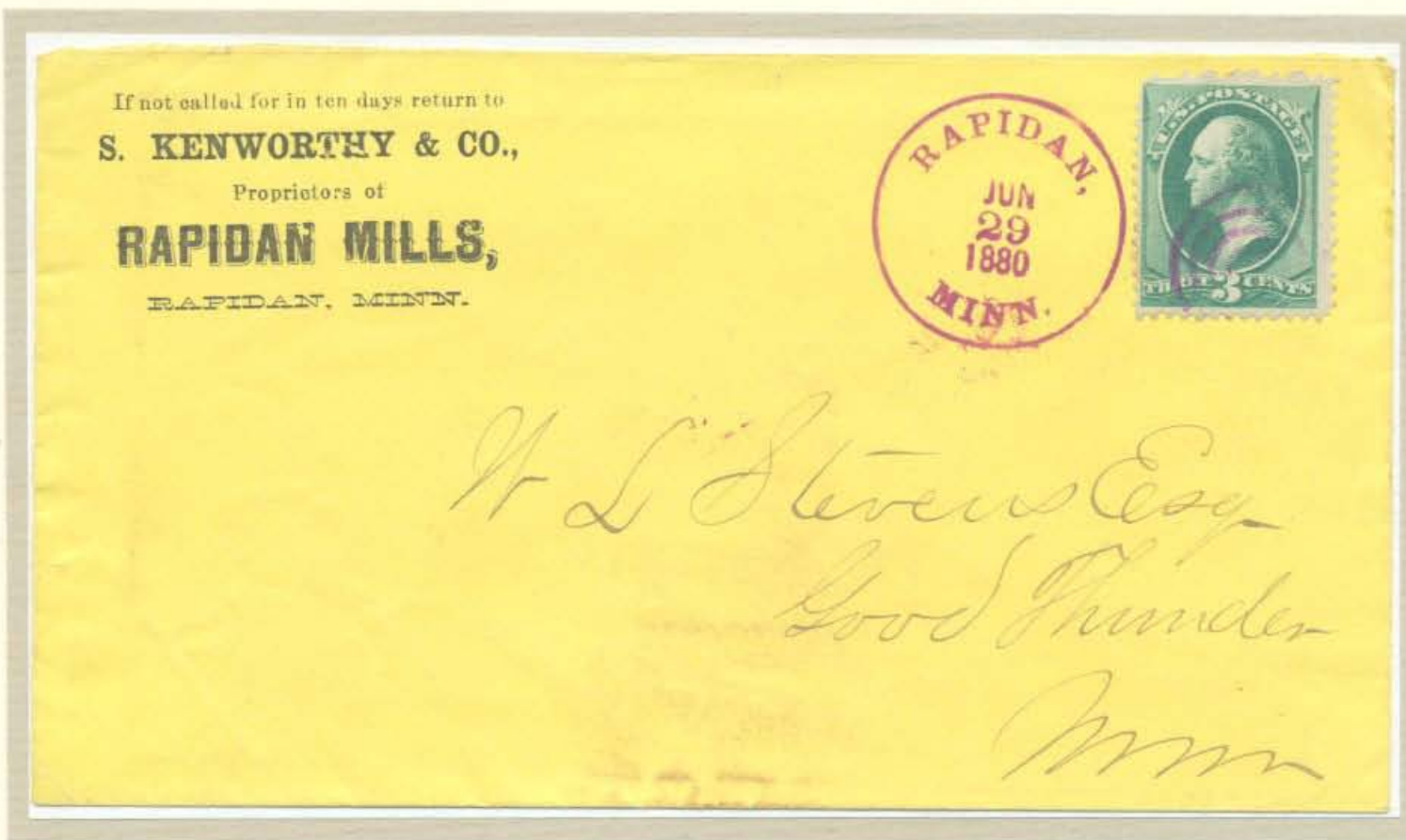
SAINT PAUL. Early corner cards of the Minnesota Historical Society.



MINNESOTA



IONA Post Office established in Murray County February 10, 1880. Postal card bears the county postmark.
RAPIDAN. Post Office established in Blue Earth County November 11, 1875 and discontinued October 1, 1900.



MINNESOTA



Lake View Hotel
Walker
Miss

City Dock, Walker

WALKER, MINNESOTA located on the Southwest side of Leach lake in Cass County. Post Office was established February 29, 1896 It is adjacent to the Leech Lake Indian Reservation. Real Photo post card shows the city dock with Indians on it and in a birch-bark canoe.

POST CARD



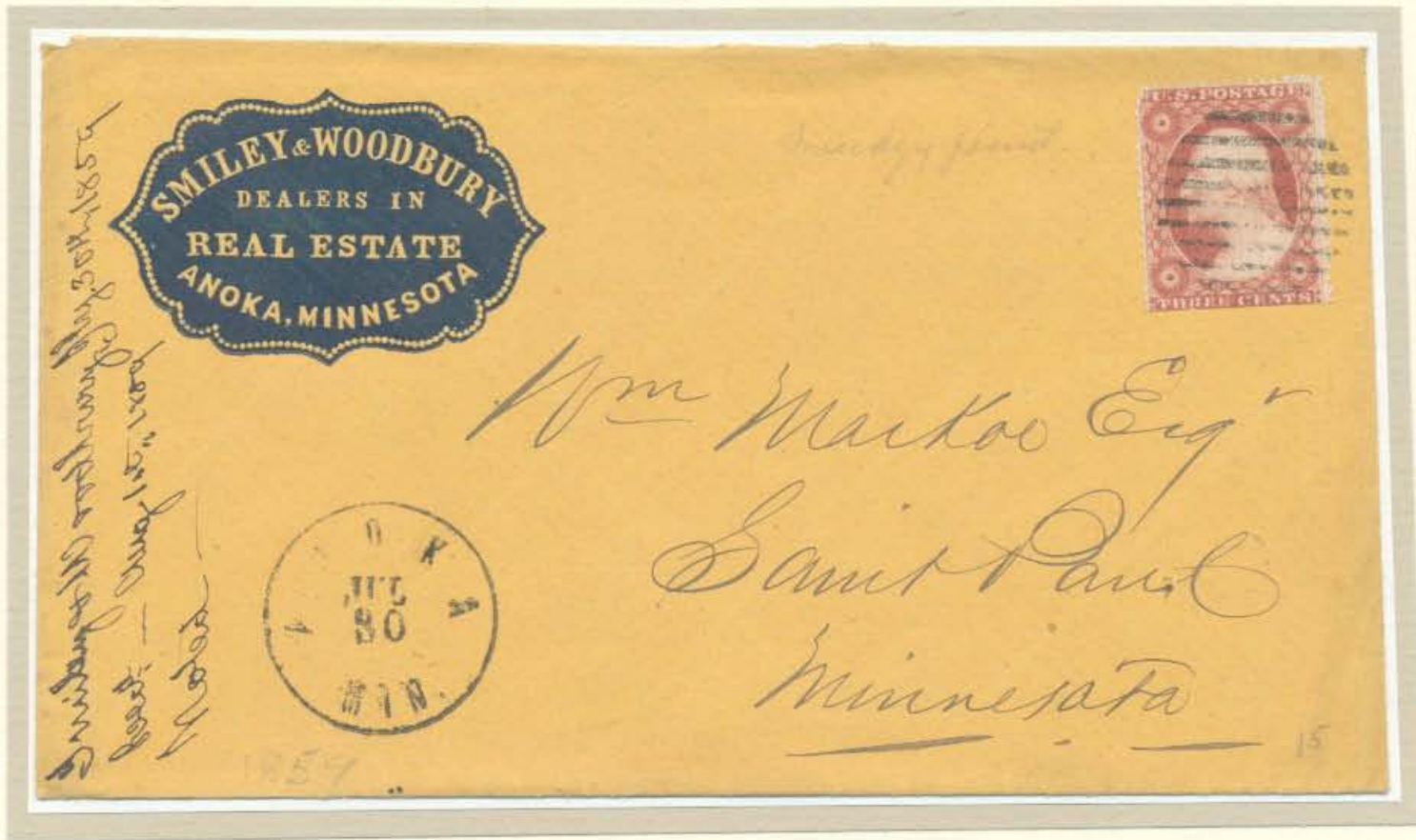
K
R
U
X
O



MESSAGE
A chipewah reservation
here, so there are plenty
of these original Americans
camping everywhere in
the woods. Spent a good
time we are enjoying the
grand landscape & fishing
H. H. J.

Mr. George English
2959 Fairmount St
Omaha
Nebr.

MINNESOTA



ANOKA. Post Office established as DECORRI July 22, 1852 and then changed to ANOKA April 18, 1854 while still in Benton County. Then to Anoka County May 23, 1857.

AUSTIN. Post Office established in Mower County October 19, 1855. Cover used in 1888.



not require so handsome store at so high a rent - and would
take no more Capital - And indeed, there is less difficulty
when I come to think of it in getting hold of store or
storehouse suitable for such a purpose - But the
best plan is, as soon as possible to buy a lot & build
a One story frame storehouse, adding a few rooms back
where one can live - for while every thing is extravagantly
high to strangers coming here - in summer & fall - \$1⁵⁰ per diem
& no board by the week for any length of time - washing 1¢ per doz and
a single piece 10 cents - yet when you settle down to house
keeping you can get along comparatively reasonably -

I saw a gentleman this morning from Pina - who has just
opened a livery stable here - who had succeeded lately in
buying himself a small house & lot - and has gone to housekeeping
now for about a month - He says he came here this summer with
his wife (no children) and had to pay 21¢ per week board for himself &
wife at the American Hotel - and notwithstanding he looked all over
town he could get no private boarding - (Such has been the case with
me as far as getting private boarding is concerned) and finally he went
to the Snelling House, where I am now, and paid 12¢ per week until he went
to housekeeping - His washing costing him 1⁵⁰ to 2⁰⁰ per week besides.

Now he says, it does not cost him 6¢ per week including hire of a maid
and he lives far more comfortably & better -

It is a general complaint the cost of things here -
by those newly arriving - I must close now - The water
in the river is so low that the Steamboats get up here
only with the greatest difficulty - The Steamer Dr
Franklin is expected in every moment, and will go out
again to day the moment she discharges her freight.

So I must close this in order to go down town &
see if she be not in - as I shall go down in her
as far as Gallena to which place she runs - there
I will take another boat to St. Louis & from there
go to New Orleans -

Ever & Truly Yours

Kindest regards to Mrs Gilbert & family also
Mrs. Cook

L. H. Allen

I might get something in New Orleans to do & remain all winter; should it hurt my health - If you can send or get me a letter to any of the Carriage Repository's connected with New Haven I should like it!

St. Paul, Minn. Oct. 19th 1853

Dear Sylvester,

I have been in this country now about 3 weeks & 1 day, and have not got well of my cough yet, and although I think it has slightly improved, I have been so troubled with other complaints, that I have not been able to get out & about to view the country as I otherwise should.

The fact is about 2 days after I arrived, I was seized with the Chills Fever, but by dieting for 2 or 3 days & then physic'ing thoroughly

Letter by J.H. Alter who has just arrived in St. Paul and gives a most interesting description and his impressions of what he has observed. The following extracts are from the letter. "The gentlemen who were to arrange with me about going to Fort Ridgely & take charge of the Sutler's Store there, have not done so, altho it is now over 2 weeks since Mr. Steel [Franklin, sutler at Ft. Snelling] (who is the capitalist and resides near here at Fort Snelling) spoke to me about it & at same time desired to wait until Mr. Randall who resides at the store, should come down. He said Mr. R. would sanction any thing he (Mr. Steel) did.... Now Fort Ridgely is 160 miles west of this.... about 200 men are stationed there and Indians all around. The business is a certain one & a good one... In the spring if I situated them I was to have a partnership... in 10 years I would make a fortune.... Yesterday I concluded I would wait upon them no longer, but make arrangements to leave to day and go down to New Orleans.... St. Paul is still a rather rough place - It is pleasantly situated some 50 or 60 feet above the Mississippi & has some fine public buildings in it. It is growing very rapidly and I think it is destined to become a large city, and quite a depot for all the trade & commerce of the North West.... In consequence of my determination to leave yesterday, I thought I would see a Mr. Winslow, who has been erecting a large 4 story brick Hotel, with Stores below, and who is going on this winter to N. York & contract to get his furniture made - and had a talk with him, and said that you might perhaps be willing to rent the corner store" He continues about business prospects and hope Mr. Winslow will contact him back east. In closing "The water in the river is so low that the steamboats get up here only with the greatest difficulty - The Steamer Dr Franklin is expected in every moment, and will go out again to day the moment she discharges her freight... I shall go down in her as far as Galena to which place she runs - There I will take another boat to St. Louis & from there go to New Orleans.... J.H. Alter"

now over 2 weeks since Mr Steel (who is the capitalist and resides near here at Fort Snelling) spoke to me about it & at same time desired to wait until Mr. Randall who resides at the store, should come down. He said Mr R. would sanction any thing he (Mr Steel) did

MINNESOTA

SAINT ANTHONY FALLS

SAINT ANTHONY FALLS.

This was the largest cataract on the Mississippi River. By 1863 the limestone foundation of the falls was breaking up as seen in the photo on the left. In the years that followed, dams and spillways were built to save the falls and by 1963 a lock was built for access to the upper river. The Winslow House dominates the skyline of Saint Anthony on the east side of the river.

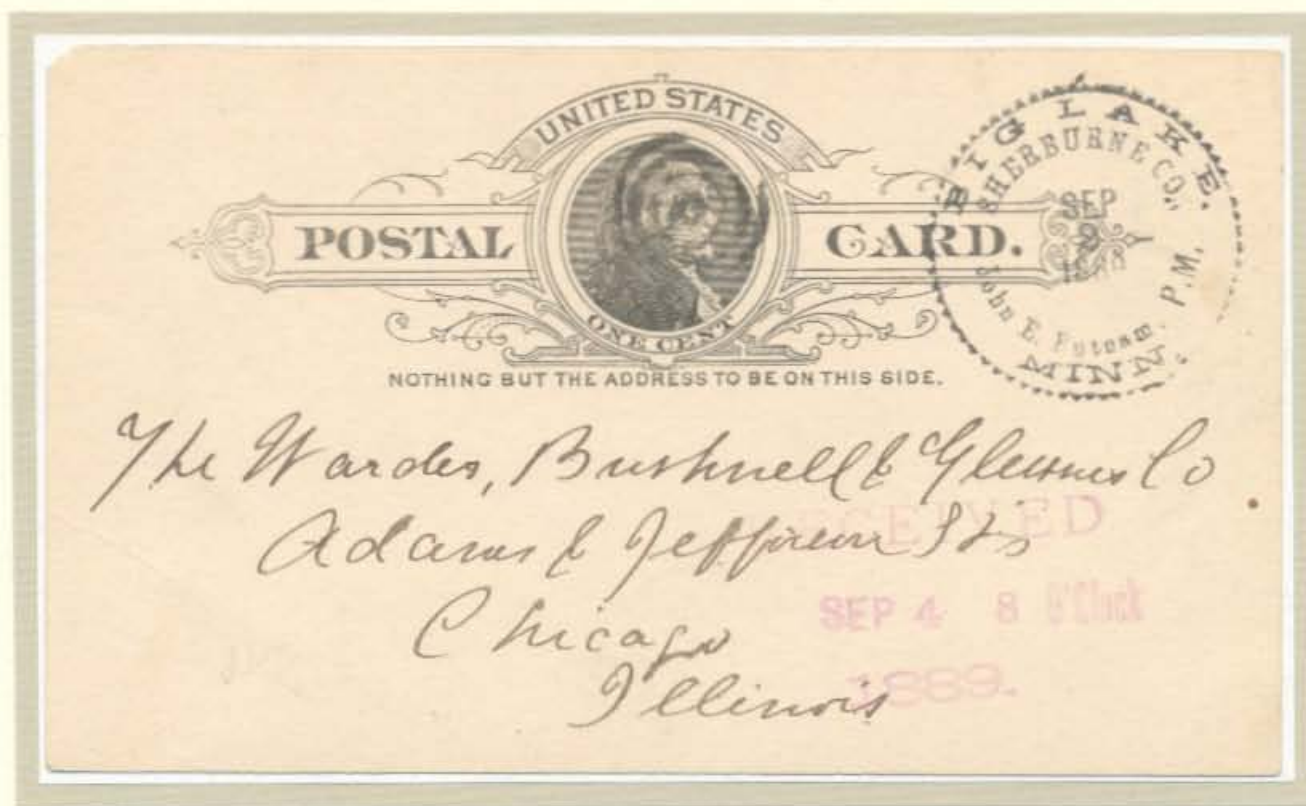


WINSLOW HOUSE

Cover illustrates the Winslow House which proclaims C.W. McLean proprietor. The 3 cent stamp is tied by the postmark "St. ANTHONY'S FALLS MIN./JUL 4, 1860". The photo on the right shows a person making notes or a sketch or just reading a book. As above photo the Winslow House is on the skyline. SEE letter on opposite page in reference to building the four story brick hotel in 1853.



MINNESOTA

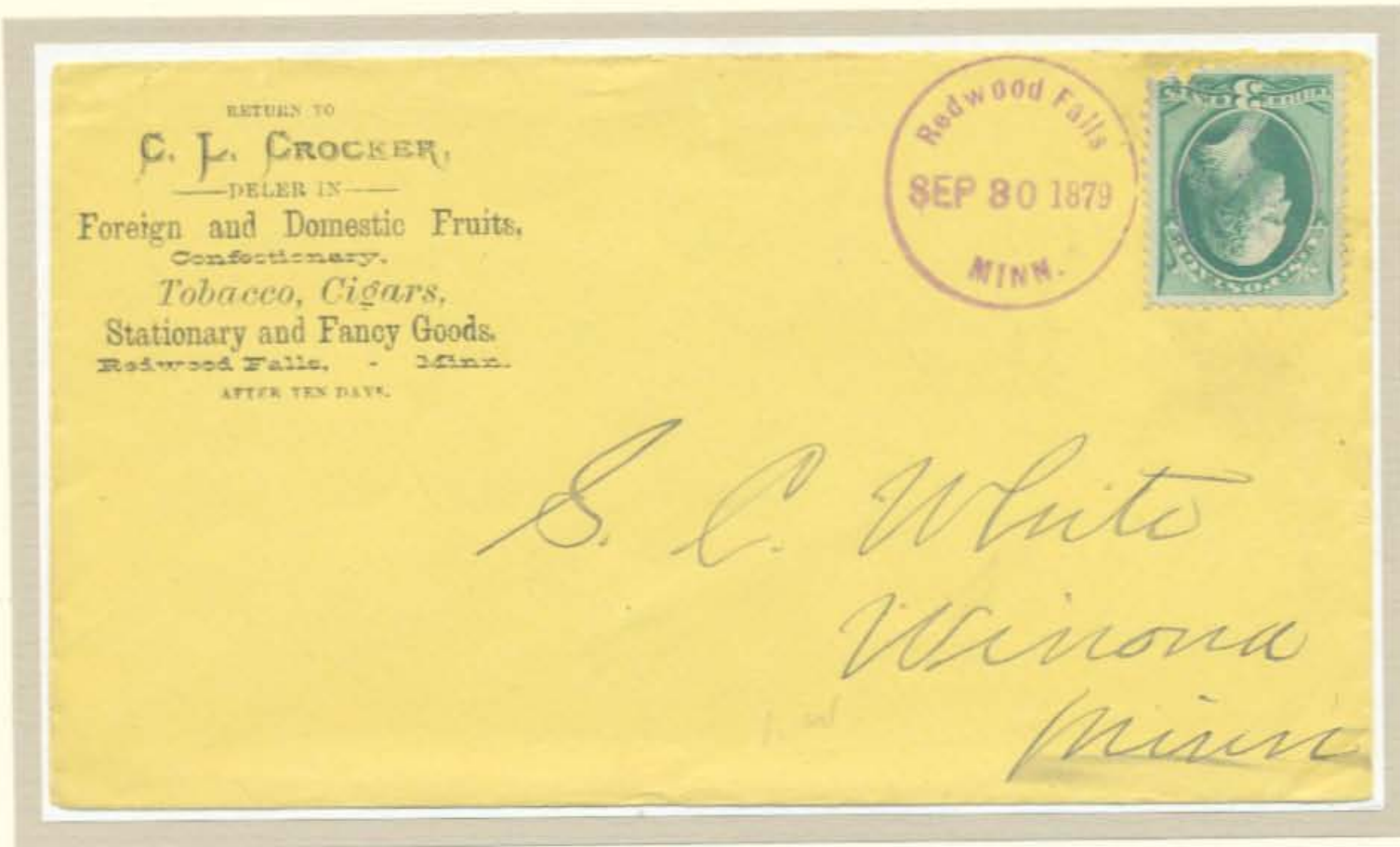


BIG LAKE. Post Office established as ELK PRAIRIE in Benton County June 14, 1854 and name changed to **BIG LAKE** July 11, 1855. On July 12, 1856 it became part of Benton County. Cover bears the county postmark of John E. Putnam September 2, 1888.



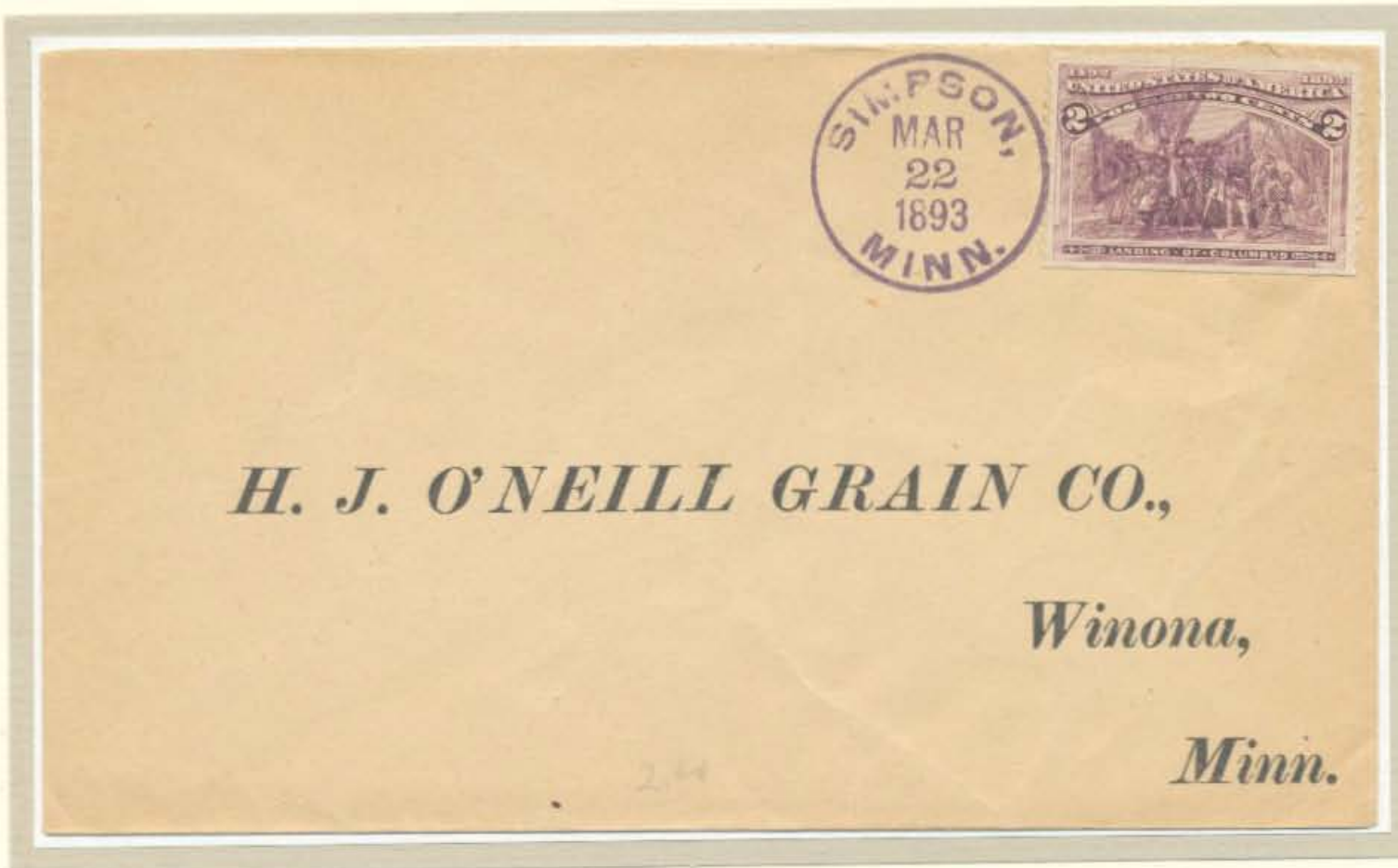
FOREST MILLS. Post Office established in Goodhue County January 3, 1879 and discontinued September 15, 1898. Cover bears the county postmark December 28, 1882.

MINNESOTA



REDWOOD FALLS. Post Office established in Redwood County August 8, 1864.

SIMPSON. Post Office established in Olmsted County October 8, 1890 and discontinued July 27, 1956.



MINNESOTA

C
O
U
N
T
Y

P
O
S
T
M
A
R
K
S



LAKE ELMO/WASHINGTON CO MINN APR 7, 18 1887. The Post Office was established as LOHMASVILLE on June 12, 1866 and then the name was changed to LAKE ELMO on January 31, 1879.



LILLEMOM, MINN/GRANT CO. FEB 15 1888. Post Office established as Aastad July 22, 1881, then name changed to LILLEMOM June 9, 1881. Discontinued October 14, 1905.

SAINT PAUL



Published by Manger Brothers 1859.

ST PAUL, MINN.

December 14th 1863.

Dear Sir,

This morning
As you
about Saint
write on this
understand
remember
not word this

Very interesting letter to St Paul
& early suggested view.

Mr. Alfred du C. Chandler
Brookline
Mass.

SAINT PAUL
JUL 15
1863
MINN

The writer of this letter gives a very favorable description of the city of Saint Paul in 1863, pointing out and identifying the buildings pictured in this illustrated letter-sheet.

copy me over about the city



