

The Minnesota Territory



MANTORVILLE Post Office was established on July 21, 1855 in Dodge County. It was named for the Mantor brothers who settled there in 1853.

Cover shown above was used in 1858 - just one week before statehood.



MAZEPPA Post Office was established on January 7, 1856 in Wabasha County. It is named for Ivan Mazeppa, a Cossack chief, who is commemorated in a poem by Byron.

The Minnesota Territory

Sunrise City M.T.
Feb 27th

my
Free

Sunrise City M.T.
Feb 27th

my
Free

Postmaster,
Taylors Falls.
M.T.

1857

Sunrise City Feb 27th / 57

Mr E. Wyman,

Dear Sir, Please loan me
a few more Postage Stamps, say fifty
more 3 cent and fifty one cent, and
you will greatly oblige, as I do not
get mine yet. the mails are very slow.
please send them by return mail.

Respectfully Yours

Geo S. Frost P.M.

SUNRISE CITY Post Office was established on February 4, 1856 in Chisago County and discontinued on November 30, 1954. The CITY was dropped from the name April 23, 1894. The Postmaster writes to his counterpart at Taylors Falls for "fifty more 3 cent and fifty one cent stamps".

The Minnesota Territory

Red Wing
Skin Gen April 19th 55



RED WING The Post Office was established as **Wah-coo-ta** on August 6, 1850 in Wabasha County. On October 7, 1850 the name was changed to **RED WING**. On March 5, 1853 it became the Seat of the newly formed Goodhue County.

Red Wing was originally founded as a mission to the Sioux Indians in 1837 by the Swiss missionaries Samuel Denton and Daniel Gavin. It was named for a succession of Sioux chiefs whose village stood on the west shore of Lake Pepin where the city now stands.



The Minnesota Territory



RED WING, M.T. The cover above bears the type I postmark used "APR 12" - no year date. Cover below bears the type II postmark in red, on a fancy envelope, inscribed "SPEED THE SOFT INTERCOURSE FROM SOUL TO SOUL", containing the only recorded use with a VALENTINE from the Minnesota Territory.



The Minnesota Territory

Fig. 1



Fig. 2



Fig. 3



RED WING NUMERAL 3 PRECANCEL. For many years collectors had noted this numeral 3 both on and off cover. In either case the 3 was always struck on the stamp and did not tie the stamp to the cover. Because of this the theory developed that the Postmaster had precanceled a sheet or more of these three cent stamps. Then a cover bearing the red territorial postmark was found with the numeral 3 tying the stamp to the cover. See Fig. 1. Also note Fig. 2 and 3 where the numeral 3, not tying the stamp, is used in 1861 with the first statehood postmark, and almost three years after Minnesota became a state.

It is still reasonable to believe that the numeral 3 is a precancel, and in the case of Fig. 1, the Postmaster simply picked up the numeral 3 handstamp and canceled the stamp to the cover.

The Minnesota Territory



RED WING. This is Type III and the most common of the territorial hand-stamps in both red and black.



The Minnesota Territory

Cannon R Falls
Mr & Mrs H



CANNON RIVER FALLS Post Office was established on June 18, 1855 in Goodhue County. On August 15, 1889 the name was changed to **CANNON FALLS**. The cover shown above contains a letter dated "Cannon Falls Nov. 11, 1857". It would indicate that people were calling the town **CANNON FALLS** in the territorial days and long before the Post Office Department dropped the **RIVER** from the name.



The Minnesota Territory

Cannon Falls
Mt Sept 5



CANNON FALLS Same Post Office as CANNON RIVER FALLS with the RIVER left out.

See CANNON RIVER FALLS in this exhibit.



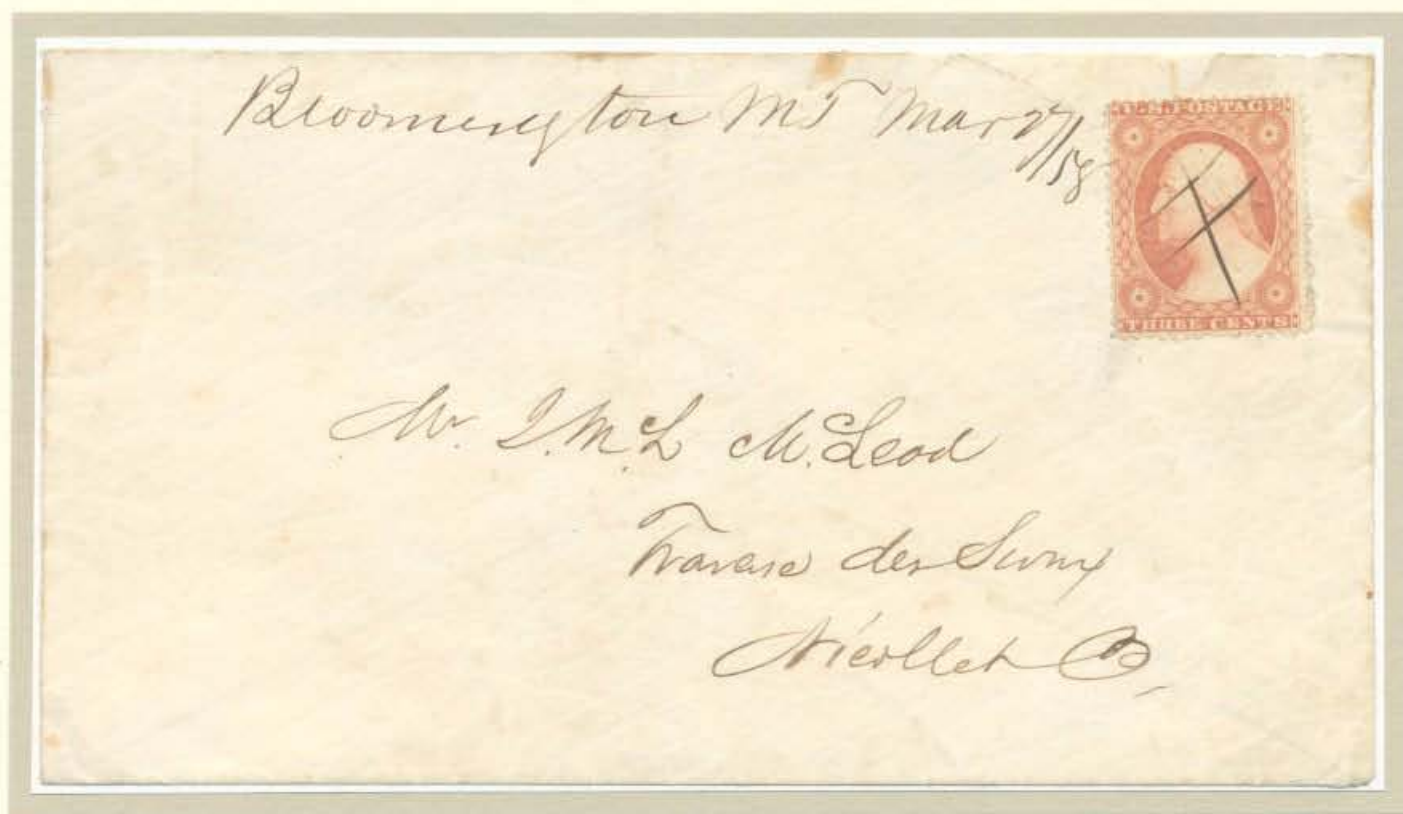
CANNON CITY This Post Office was established on May 11, 1855 in Rice County. It was discontinued on September 14, 1880. Cover shown originated at Upper Aquebogue, New York on August 1st and was *missent* to CANNON CITY instead of CANNON FALLS.

The Minnesota Territory



BELLE PLAINE Post Office was established on November 14, 1854 in Scott County. The name is from the French meaning "beautiful plain".

Bloomington MS Mar 27/58



BLOOMINGTON Post Office was established on June 19, 1853 in Hennepin County. It was discontinued April 30, 1902 and is now a station of the Minneapolis Post Office.

The Minnesota Territory

this sch. by donations in money or clothing it will be gratefully received & appropriated according to the best of our ability. Should any one feel disposed to write us we shall be happy to answer any inquiries they may wish to make. Our christian friends need not be afraid of prying into our affairs, they are all open for their inspection, and we wish they would be free in making inquiries, either about our labors here or about Mrs. Tyler. other things in this region of whh. they would like to know

March 1: 1853

C. T. S.

My dear Sophronia,

Were I in the habit of making apologies,

I give to those ladies who in B. who regard me some assistance. I would rather feel disposed to do anything possible for the benefit of

I might do so now, for
 good bye after my plea
 and a half would pay
 don for any seeming
 much as ever, and
 you manifested in
 has rolled on almost
 good assistants, but in
 superintendence in the
 side my appropriate
 While



Belle Prairie

Paid 3

Min. Ter. March 12

Mrs Frederic Tyler

Brattleboro'

VT

here, my husband went on with the buildings; and in Nov. about six wks. after my return, we opened a school. Through the winter and spring follow

Belle Prairie

Paid 3

Min. Ter. March 12

BELLE PRAIRIE Post Office established on March 24, 1852 in Benton County. On February 25, 1856 it became part of the newly formed Morrison County. It was discontinued as a Post Office on July 14, 1904.

My dear
 had not yet received what we expected from friends in the States, and our circumstances were such that we thought best to dismiss most of our charity scholars, & slacken our pace a little, till we should see what turn our affairs would take. Altho we expected the debt of the schoolhouse to be met

*Young America Mt.
Oct 26/57*



YOUNG AMERICA Post Office was established October 25, 1856 in Carver County. Cover shown is postmarked in manuscript "Young America M T / Oct 26 / 57. It is the only known example of the territorial period.



CARVER Post Office was established on June 5, 1856 in Carver County. The town and the County were named for Captain Jonathan Carver, explorer and author, who visited the Upper Mississippi region in 1766.

The Minnesota Territory



SAINT CLOUD. The Post Office was established on August 16, 1857 in Stearns County. The city is named after the palace of St. Cloud near Paris, France.

*St Augusta M.T.
Jan 9th*



SAINT AUGUSTA The Post Office was established on August 8, 1857 in Stearns County. It was discontinued on November 14, 1903.

The Minnesota Territory

Paid 11) Bancroft
Dec 31/57

BANCROFT The Post Office was established on January 8, 1857 in Freeborn County. It was named for George Bancroft the U.S. Secretary of the Navy, founder of the U.S. Naval Academy and author of a "History of the United States". It was discontinued on July 31, 1902.

Freeborn December the 1th 1857

dear cousin

it is with pleasure that i take my pen in hand to let you know that we are all well at present i am a shamed that i have not wrote to you before but you must not feel hard fore i have to go

Paid 3) Chester Arwis
Bancroft
Dec 31/57
felt mill
Pillager co
Ky

and i have not ink rather strange it is so i started tenth of on our come th of october the road to here and

now i will say that if you want to live by me now just rig out and start out for minnesota there

The Minnesota Territory



CHATFIELD Post Office was established on July 29, 1854 in Fillmore County. The cover shown above was used April 20, 1857. It bears the Type I postmark.

Cover below was used July 1, 1859 and bears the Type II postmark of the territorial period. Territorial usage of Type II is not known.



The Minnesota Territory



BROWNSVILLE. Post Office was established in Wabashaw county, one of the nine original counties, on May 28, 1852. It became part of Houston county in 1854.



CALEDONIA. Post Office was established in Houston county on July 19, 1855 and is presently the county seat. It was named after the poetic name of Scotland - Caledonia.

The Minnesota Territory



OWATONNA The Post Office was established on August 16, 1855 and is the Seat of Steele County. The name is derived from the Sioux word meaning Straight River.



PLAIN VIEW. The Post Office was established as GREENVILLE in Wabasha county on July 2, 1856. The name was changed to PLAIN VIEW on July 30, 1857 and then to PLAINVIEW about 1879.



FRANCIS ALLEN SCULPTOR

For the Proprietor of SCOTT'S BETA

MOUTH OF THE ST CROIX RIVER
(MINNESOTA)

POST OFFICE DEPARTMENT, T.

CONTRACT OFFICE

June 15th 1850,

SIR:

Your office is to be supplied with the mail *once* a week from *Point Douglas* distance *8* miles. The expense of so supplying it is to be defrayed wholly out of the nett proceeds of your office, and is not to exceed the sum of *32* dollars per annum; the surplus, if any, to be retained, subject to the order of the Postmaster General.

D. Stone is accepted as Contractor, to perform this service, which is to ~~commence~~ *take effect from 1st*

April 1850

You will report the date of actual commencement of service; also the days and hours at which you have arranged the departures and arrivals of the mail in each direction, at each office.

In reference to the payments to be made to the contractor, you will understand that this is to be done by you quarterly, after the expiration of each quarter, on his exhibiting a counterpart of his contract, ~~signed by the Postmaster General.~~ This will be evidence of due execution of contract on the part of the Contractor; without which, or a special order from the Department, no payment should be made to a contractor on a special route, or to any other person. The Contractor's receipt you will forward to the Auditor for the Post Office Department, as a voucher to entitle you to credit for the amount so paid.

The quarters expire on the last days of March, June, September, and December.

Respectfully, your obedient servant,

Nicholas Walter

For First Assistant Postmaster General

To the Postmaster at

*Cottage Grove,
Washington Co
Minnesota, Dy.*

Post Office Department,

Official Business.



Postmaster
Cottage Grove
Washington Co.
Main. N.Y.



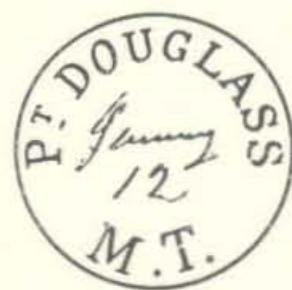
STAMP REMOVAL PENALTY \$100.00
POST OFFICE DEPARTMENT
WASHINGTON, D.C. 20540

The Minnesota Territory



Lake St Croix }
 Nov 27 }
 Min Terr }

LAKE SAINT CROIX Post Office was established on July 8, 1840 in Crawford County, Wisconsin Territory. The name was changed to POINT DOUGLASS on January 22, 1850. See cover below.



POINT DOUGLASS Post Office was established under this name on January 22, 1850. It was formerly LAKE SAINT CROIX - see above. This Post Office was discontinued, while in Washington County, M.T., on June 30, 1903.

The Minnesota Territory



PAID

MANKATO Post Office was established on November 25, 1853 and is the Seat of Blue Earth County. It is located at the great bend of the Minnesota River, and it was here that thirty-eight Sioux Indians were hanged on a single gallows following the Sioux Uprising. They were all dropped at once by the cutting of a single rope on the day after Christmas 1862. The sad aftermath of a tragedy that should never have happened.



The Minnesota Territory

I send you a specimen of the Ballots used in Minnesota



Delegate--H. M. Rice.
Council--Charles E. Flandrau.
Representatives--Parsons K. Johnson,
Aurelius F. de La Vergne.

Mankato Oct. 7. 1855

Brother Edward

Council--Charles E. Flandrau
Representatives--Parsons K. Johnson
Aurelius F. de La Vergne.

Hon Delegate
H M Rice

Your letter dated Sept 16th
on the 4th and I am glad
things have got along as I was
could never get to Preston. I
am like you have to write Election

runs very
of Mr Rice
Congress,
in a few
arrangement
to go after
generally
enough
Fred has
pretty regular

Paid 3

Mankato Ms
Oct 11

Edward M. Sargent Esq
Lowell
Mass

1855

Paid 3

Mankato Ms
Oct 10

MANKATO Interesting letter dated at Mankato Oct. 7, 1855 in which the writer states that the Winnebago Payment to the Indians comes off in a few days and that the Indians will spend the money on whiskey and raise the "D--l". He includes two sample ballots and says that he is a particular friend of Henry M. Rice, the "Loco candidate for Congress" (Rice did win and go to Washington). To quote the writer: "This is a great place especially on Sunday as there are about 5 Dutch Grogeries and about 3 tables of gamblers at it every Sunday and every Dutchman in town gets drunk". He adds that the "Pmbina Train" get through. This would be the train of Red River ox carts from St. Paul to Pembina on the Canadian border.

since the first of Sept as its rained all through

The Minnesota Territory

Taylor Falls, Minn.
July 22nd 1855

TAYLORS FALLS The Post Office was established on February 21, 1851 in Washington County. On March 31, 1851 it became part of the newly formed Chisago County.

Located at the Dalles of the St. Croix River, platted in 1850 and incorporated in 1858. It was named for Jesse Taylor who arrived in 1838. It was once an important lumber center.



The Minnesota Territory



TAYLORS FALLS Cover shown above is addressed to Columbia, California May 9, 1855. It is prepaid on a 3¢ Nesbitt envelope, with a manuscript "Paid 7¢" in cash, to make the 10¢ rate.

Cover below is from Columbia, California to Taylors Falls, Minnesota Territory December 4, 1856. It is prepaid with a 10¢ imperf of the 1851 issue. Both covers were probably routed via Panama as that was the regular mail route at the time.



The Minnesota Territory



Mr. William H. Allen
Monroe, Green Co.
Wisconsin

1861

Taylor Falls, April 28th 61

Dear Will & Mattie

I take the first opportunity of writing to let you know that I have arrived safe and sound at my place of destination and am well and in first rate spirits. We left Monroe Wednesday morning at four o'clock the car time having changed. got to Janesville in time for breakfast staid until noon then took the cars for Prairie du Chien instead of LaCrosse as talked of. We then took a splendid steamer

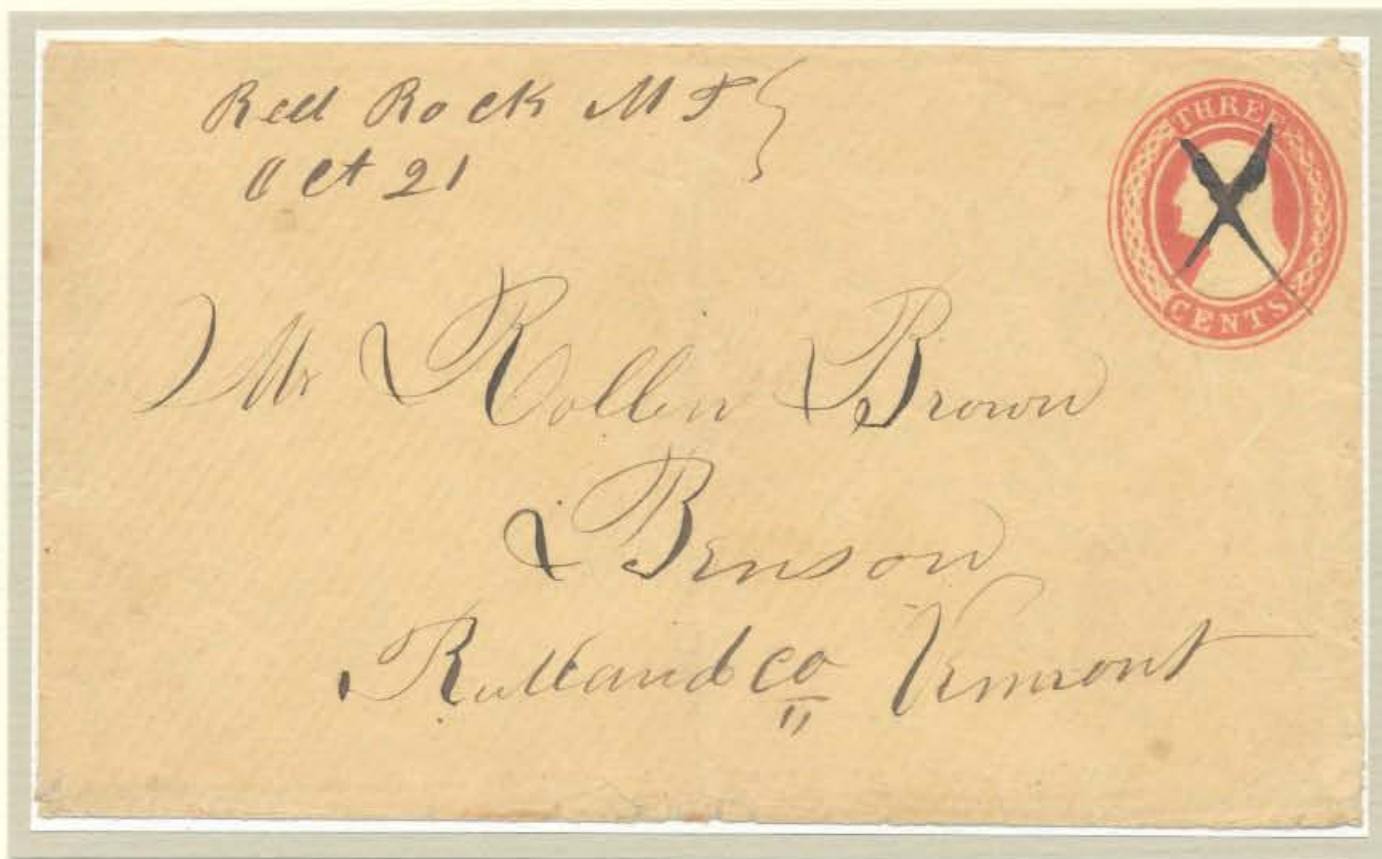
TAYLORS FALLS Interesting letter from an early pioneer who reports on his trip to Minnesota from southern Wisconsin: "We left Monroe Wednesday morning at four o'clock (by railroad) ... got to Janesville in time for breakfast ... took the cars for Prairie du Chien ... We then took a splendid steamer (at Prairie du Chien) The MILWAUKEE up the river to Prescott at the junction of the Mississippi and St. Croix. Then we took a packet up to Taylors Falls." He likes the country: "common hands get from 16 to 25 dollars per month and driving logs on the river two dollars per day - good ox teamsters get as high as fifty dollars per month."

Postmarked April 30, 1861 - statehood use of the territorial cancel.

The Minnesota Territory



ANOKA This Post Office was established as DECORRI, in Benton County, on July 22, 1852. The name was changed to ANOKA on April 18, 1854. On May 23, 1857 it became the County Seat of the newly formed County of Anoka. ANOKA is an Indian word meaning "on both sides".



*Red Rock MT
Oct 21*

RED ROCK The Post Office was established on December 19, 1849 in Washington County. It was discontinued on May 3, 1857 in favor of the Newport Post Office about one mile south.

The name is from a large granite boulder which was held in great veneration by the Sioux Indians. It was five feet long and was painted in vermilion stripes by the Indians. It had a rudely drawn picture of the sun on one end and a face with fifteen rays on the other end.

The Minnesota Territory



SAUK RAPIDS M.T. Post Office was established May 18, 1850. It was the seat of Benton County until that office was moved to Foley. SAUK RAPIDS is now a branch of the Saint Cloud post office. Cover shown bears the only recorded use of the Type I postmark.



SAINT NICHOLAS The Post Office was established on January 31, 1856 in Freeborn County. It was discontinued on June 9, 1859.

It was the first village to be platted in this county, and after its failure to become the County Seat in 1857, all of its buildings were removed and the site became farming land.

It was probably named after St. Nicholas, the Catholic Bishop of Myra, who is often identified with Christmas and Santa Claus.

The Minnesota Territory



WINONA The Post Office was established as Montezuma on June 28, 1852 in Wabasha County. The name was changed to WINONA on August 16, 1852 and it became the Seat of the newly formed Winona County. Named for a Dakota woman, Winona, cousin of the last chief named Wabasha.



The Minnesota Territory



WINONA The post office was established as MONTEZUMA on June 28, 1852 in Wabasha County. The name was changed to WINONA on August 16, 1852 and it became the Seat of the newly formed Winona County. The name Winona is after a Dakota woman who was a cousin to Chief Wabashaw. Legend has it that an Indian maiden named Winona threw herself from the precipice known as "Maiden's Rock" on Lake Pepin, rather than marry her parents' choice.



SAINT PETER The post office was established on May 28, 1856 and is the Seat of Nicollet County. It is named for the Saint Peters River (now the Minnesota River).

Saint Peter was the home of five state governors and once battled Saint Paul to have the capitol removed to Saint Peter.

The Minnesota Territory



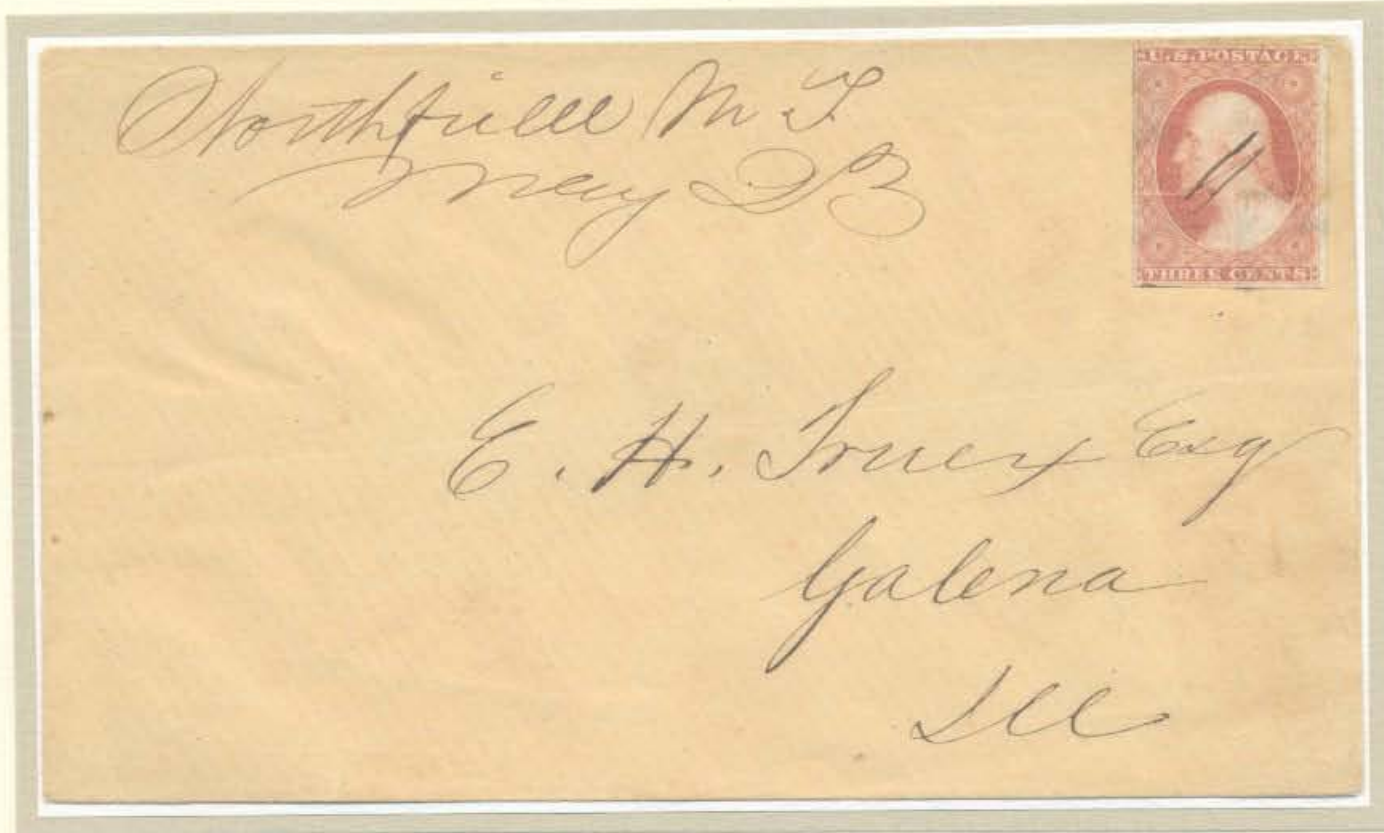
HENDERSON M.T. Post Office was established in Sibley, County on November 25, 1853. Cover above bears the Type I postmark - July 31 - no yeardate.

WACOOKA M.T. Post Office established in Goodhue County September 28, 1854 and discontinued September 20, 1869. Originally an Indian trading post established by George W. Bullard in 1850 and platted as a village in 1853. Named after Wacouta, the shooter and last reigning chief of the Red Wing band of the Dakota Indians. Not to be confused with WAH-COO-TA the first name of the RED WING Post Office.



The Minnesota Territory

Northfield Min T
May 23



NORTHFIELD Minnesota Territory.



The Minnesota Territory



NORTHFIELD The Post Office was established as Fountain Grove on September 6, 1855 in Rice County. On April 1, 1856 the name was changed to NORTHFIELD.

It was at Northfield, on September 7, 1876 that the James/Younger band of outlaws held up the First National Bank on their way to six gun immortality.



The Minnesota Territory



NORTHFIELD, M.T. Cover above bears the type I postmark with the **PAID X** in circle. Both marks are only known in bluish green. Used "AUG 11" - no year date. Cover below bears the type II in brown. Used "JUN 23" and again no year date.



The Minnesota Territory

NORTH WESTERN EXPRESS CO.,



J. C. BURBANK & CO., Proprietors.

Office of North Western Express Company,

Hastings Sept. 30 1859
Mr William & Hall



HASTINGS Post Office was established on January 14, 1854 and is the Seat of Dakota County.

Cover was used on October 1, 1859 and bears Type II of three handstamps with the territorial designation of M.T.

The Minnesota Territory

St Marys T.
June 17 1857

Friend Elia

Your friendly
letter was received and read
with much pleasure. I was
glad to see that you remembered
your promise of writing which
you made on the morning of
our departure. We arrived
here safely after a journey

ST MARYS.
June
22
M. T.

ST MARYS
June
22
M. T.

PAID
3

PAID
3

Richard Elia Esqr
North Sutton
N.H.

1857

SAINT MARYS The Post Office was established on July 2, 1856 in Steele County. On February 27, 1857 it became part of the newly formed county of Waseca. It was discontinued on February 14, 1868.

The town was named for its Catholic Church.

The Minnesota Territory

Saint Peter Minnesota
January 13th 1859

To Father & Mother

Dear Parents It is some
time since I received a letter from you &
was glad to hear that I hear from any

Some time since
night although
frequently send
a receive them
I have been
all upon the
in one district
one has been
is a good
it is my



duty to appear on the part of the State in
all the cases in 14 Counties - There have been

SAINT PETER Interesting letter from a young attorney, James Hinds, to his folks back home: "There is a good deal of criminal business and it is my duty to appear on the part of the State in all cases tried on the charge of murder. One who was confined in Le Sueur County for murder was seized by a mob of 30 or 40 men and hanged to a tree before he was allowed a final trial".

The date is January 13, 1859 but the Post Office was still using the territorial cancel as many did in the early days of statehood.

to a tree before he was allowed a final
trial - In March I appear for the State
in Sibley County against a man for murder
The proof is not very strong & he will probably be acquitted

Traverse Des Lions Minnesota
February 6th 1837

My Dear Mother

Yours was received
some weeks ago, which was quite a
long time after it was written. The
United States mails from the East upon
arriving at Dumbuth upon the Mississippi
river in navigation time are transported
some five or six hundred miles to this
place by water. Although we have a
mail every day yours was not received
until about five weeks after it was first
mailed. It should have come through in
seven or eight days.

The weather here for the past four
or five weeks has been rather severe but
I have not suffered near so much from
the cold here this winter as I did in
Cincinnati last. To day is mild and
pleasant - quite Spring like.

I have been expecting
Henry and Mary to visit me for the
last few days but no one comes.

Extensive preparations are being made
here in order to the early commencing of
a large number of publick and private

The Minnesota Territory



SAINT PETER The cover shown above was used to Mecklenburg, Germany, February 16, 1858. It was charged the International rate of 30¢ collect, which breaks down as follows: U.S. Inland 5¢, U.S. Packet 18¢, Belgian Transit 2¢, and Prussian Inland 4¢. Minnesota territorial covers to a foreign country, except Canada, Britain and this one to Germany, are virtually unknown.

Cover shown below was used on October 19, 1857.





VIEW OF ST. PETER, MINNESOTA, ON THE MINNESOTA RIVER.

Dear Mr Worden

St Peter Aug 26th 1857

Mr Bonap has replied to my inquiries that his claim is the "Mortgage dated Oct 11th 1856" for \$405.50.

Now, what am I to do with regard to the last item, the mortgage of Thos. Gilman and wife to G.W. Pope dated Feb, 4, 1857 for \$360.00 and due on the 1st of June last? I

have
shall
made
incur
raise
more
Bonap
until
is rais
also.

write,
he
all
nd
the
The
so
ortgage
that
you

06
Dear Sir
A. S. Worden Esqr
= Bridgeport
= Connecticut



The Minnesota Territory



SAINT PETER. Cover bearing the corner card of the CLINTON HOUSE in Lyons, Iowa, used from Saint Peter M.T. The little photograph shown above pictures the CLINTON HOUSE with two stagecoaches.



The Minnesota Territory

SAINT PAUL The cover shown above bears the Type II handstamp in red with a handstamp PAID).

The cover below bears the Type III handstamp with a PAID 10 for over 3000 miles. It was probably routed to the Oregon Territory via Panama.



PAID
10⁰

